



## Model: Z.L2.M

20" x 18" Wall Hung Lavatory

Zurn One Manual Hand Washing System

TAG \_\_\_\_\_

### Architectural/Engineering Specification:

Complete manual hand washing system includes 20"x18" vitreous china wall hung lavatory with Z81000-XL-3M polished chrome plated cast brass 4" centerset single control lavatory faucet with a 0.5 gpm aerator, Z8743-PC chrome plated cast brass solid top grid strainer, Z8700-8B-PC series P-trap, and Z8804-XL-LR-LK-PC series supply stop kit.



### Product Features:

- 20" [508 mm] x 18" [457 mm] vitreous china lavatory
- Wall hung lavatory provided with wall hanger bracket or for use with concealed arm carrier systems
- Front overflow
- Ceramic cartridge with temperature limit stop
- Chrome-plated Cast Brass faucet body
- Complete commercial grade grid drain, P-Trap, supply stops and supply kit.



### Zurn One System Packout Includes:

#### Lavatory - Z5344:

20" x 18" vitreous china wall hung lavatory with 4" center faucet holes. Provided with hanger plate and holes for concealed arm carrier systems.

#### Faucet - Z81000-XL-3M:

Polished chrome plated cast brass 4" centerset single control lavatory faucet with a 0.5 gpm vandal-resistant pressure compensation aerator.

#### Grid Drain - Z8743-PC:

Chrome plated cast brass solid top, open grid, P.O. plug. Furnished with 5" long, chrome plated brass 17 gauge tailpiece and chrome plated cast brass locknut.

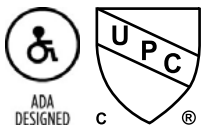
#### P-trap w/ Wall bend - Z8700-8B-PC :

Chrome-plated cast body 1 1/4" P-trap with cleanout, tubular wall bend, brass nuts and shallow escutcheon with compression inlet.

#### Lavatory Supply Stops - Z8804-XL-LR-LK-PC:

Chrome plated solid brass angle stop with 1/2" NOM compression inlet, 3/8" OD compression outlet, loose key, chrome plated copper riser tubes and chrome plated inlet flanges.

### Compliance and Certification:



Meets the American Disabilities Guidelines and ANSI A117.1 requirements when installed according to these requirements.

Fixture - Complies with ASME A119.2 / CSA B45.1

Faucet - Complies with ASME A112.18.1 / CSA B125.1

### Architectural/Engineering Approval

The information contained in this document is subject to change without notice.  
Please contact Zurn for most up to date information.

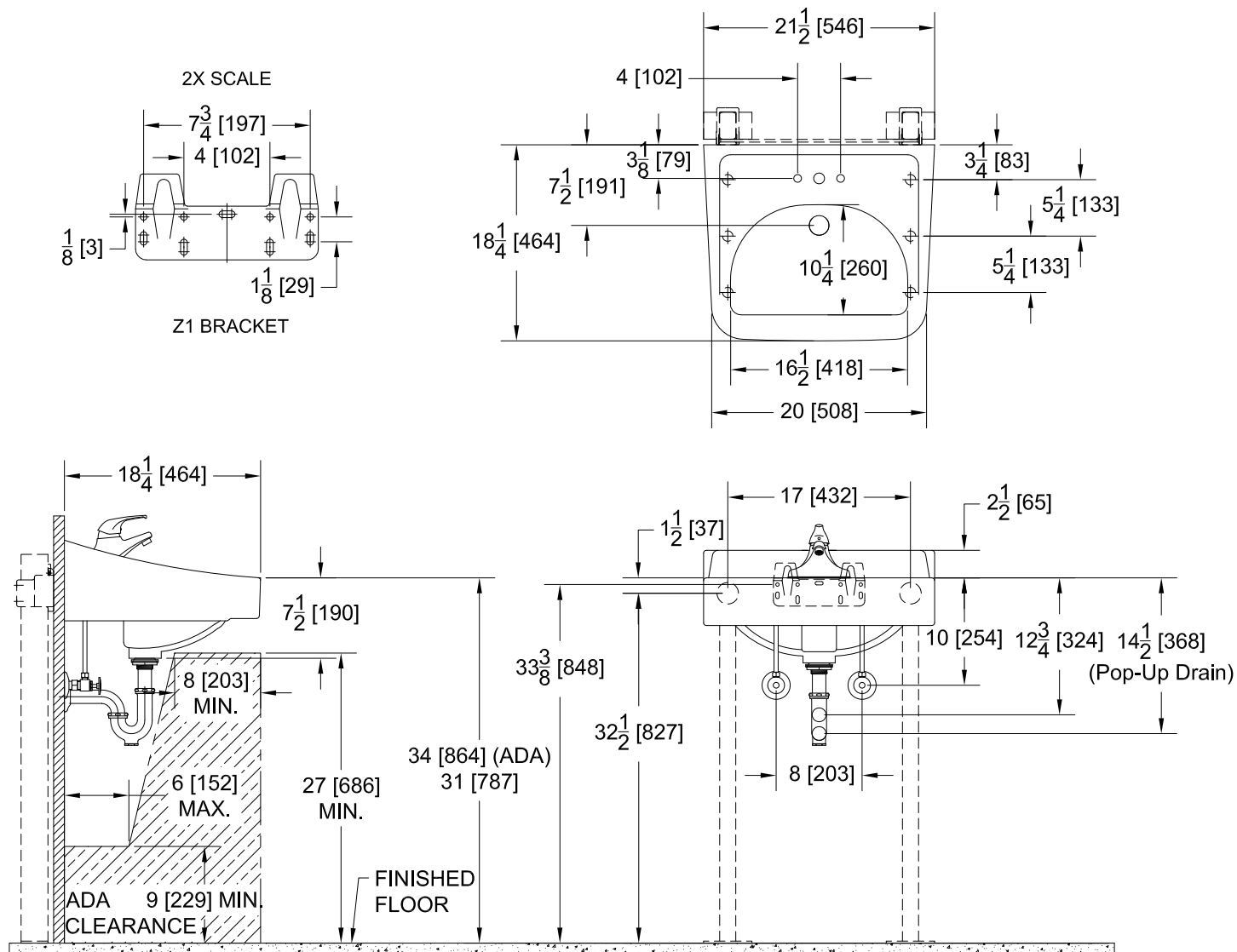
**Model: Z.L2.M**

### 20" x 18" Wall Hung Lavatory

## Zurn One Manual Hand Washing System

TAG \_\_\_\_\_

## Rough-in Dimensions



Meets the American Disabilities Guidelines and ANSI A117.1 requirements when installed according to these requirements.

Fixture - Complies with ASME A119.2 / CSA B45.1

Faucet - Complies with ASME A112.18.1 / CSA B125.1

**ZURN INDUSTRIES, LLC** 511 W. Freshwater Way, Milwaukee, WI U.S.A. 53204 · Ph. 1-855-ONE-ZURN, Fax 919-775-3541

In Canada: **ZURN INDUSTRIES LIMITED** 7900 Goreway Drive, Unit 10, Brampton, Ontario L6T 5W6, Ph. 905-405-8272, Fax 905-405-1292

Rev. A

Date: 08/23/19

C.N. No. NEW

Prod. | Dwg. No. SS Z.L2.M

US 1.855.ONE.ZURN CANADA 1.905.405.8272 ZURN.COM

