



STAINLESS STEEL SQUARE CORNER SERVICE SINKS

Item #:	Qty #:
Model #:	
Project #:	



WSS-14-21 Shown

Manual Operated
(Faucet Not
Included)



Knee Valve



WSS-14-21KV Shown



WSS-14-21EF Shown



WSS-14-21FV Shown



Toe-Push Valve

FEATURES:

- 10" High Backsplash.
- 12" Sink Bowl Depth (8" Bowl Depth On KV Series).
- Stainless Steel "Z" Brackets (2) Supplied Each Unit.
- 3 1/2" Rear Drain Basket Drain(s)
- Support Bracket Units Includes Tubular Stainless Steel Supports That Allow Full Clearance Underneath.

Additional Features:

- Manual Operated Units:** Faucet not included. 8" O.C. holes provided.
- Electronic Faucet Units (EF):** Plug/Battery Operated Electronic Faucet(s).
- Knee Valve Operated Units (KV):** Knee Operated Valve(s).
- Toe-Push Operated Units (FV):** Toe-Push Operated Valves(s).

Construction:

- All Tig Welded.
- Welded Areas Blended To Match Adjacent Surfaces And To A Satin Finish.
- Die Formed Tubular Wall Brackets.

Material:

- All 16 Gauge Type "3094" Stainless Steel.
- 1 5/8" Tubular "304" Stainless Steel Wall Brackets Or
- 1 5/8" Tubular "304" Stainless Steel Legs With Bullet Feet.

Mechanical:

- Faucet Holes 8" On Centers For Manual Operated Units.
- Single Faucet Hole(S) For Electronic Operated Units.

MANUAL FAUCET OPERATED	ELECTRONIC OPERATED	KNEE VALVE OPERATED	TOE-PUSH OPERATED				
Model #	Model #	Model #	Model #	L	W	Wt.	Cu. Ft.
WSS-14-21†	WSS-14-21EF	WSS-14-21KV*	WSS-14-21FV**	18"	17-1/2"	45 lbs.	8
WSS-16-25†	WSS-16-25EF	WSS-16-25KV*	WSS-16-25FV**	22"	19-1/2"	52 lbs.	10

†Add K-472 For Faucet Hole Revision

*Knee Valve Unit Has 8" Bowl Depth

**Toe-Push Operated Sinks Include Wall Bracket & Are Floor Mounted



Customer Service Available To Assist You 1-800-645-3166 8:30 am - 8:00 pm E.S.T.

For Orders & Customer Service:

Email: customer@advancetabco.com or Fax: 631-242-6900

For Smart Fabrication™ Quotes:

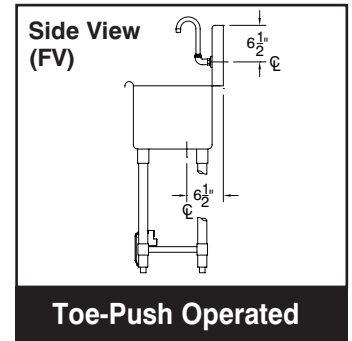
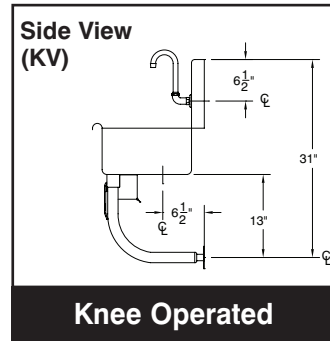
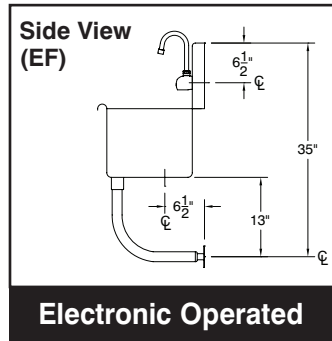
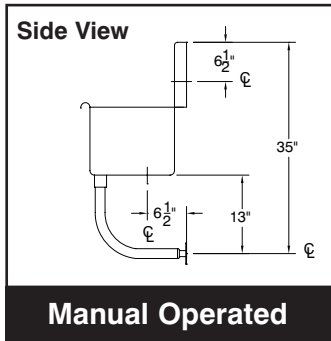
Email: smartfab@advancetabco.com or Fax: 631-586-2933

18" SINGLE STATION SERVICE SINKS

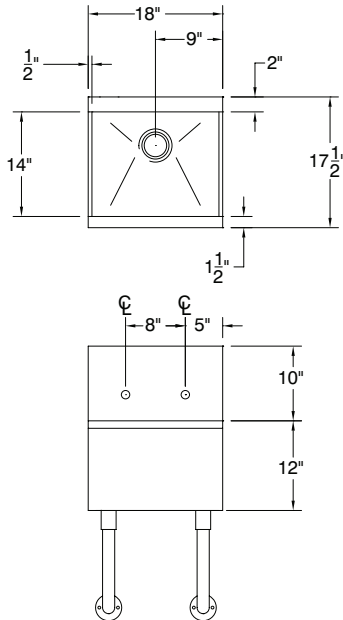
TOL $\pm .500"$

FITTINGS SUPPLIED AS SHOWN

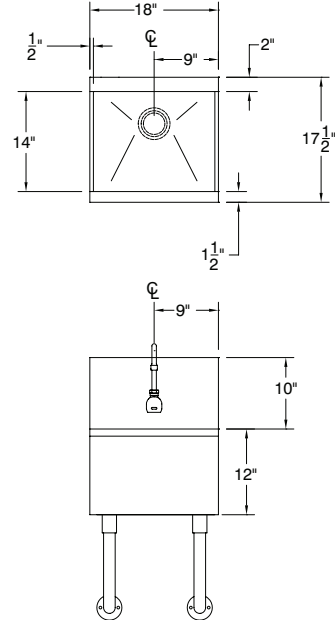
ALL DIMENSIONS ARE TYPICAL



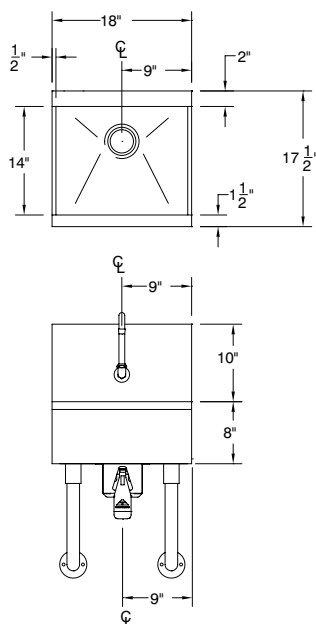
WSS-14-21 Manual Operated



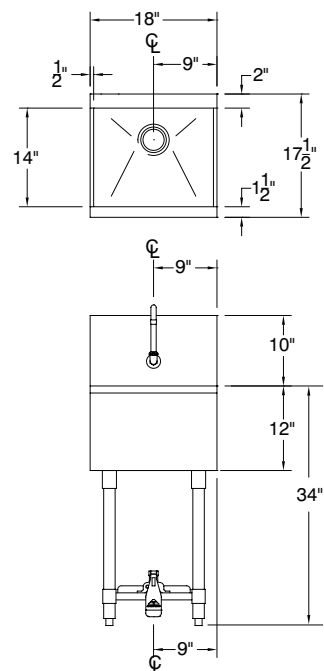
WSS-14-21EF Electronic Operated



WSS-14-21KV Knee Operated



WSS-14-21FV Toe-Push Operated



ADVANCE TABCO is constantly engaged in a program of improving our products. Therefore, we reserve the right to change specifications without prior notice.

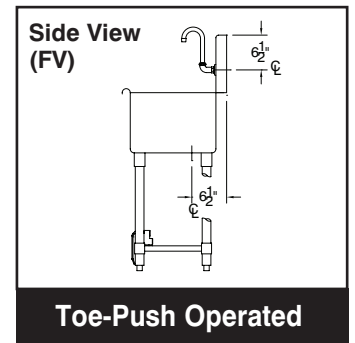
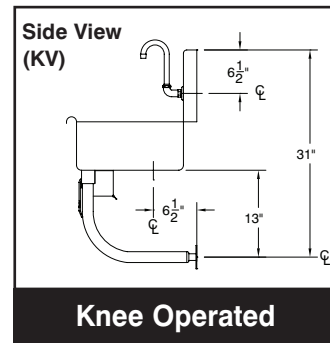
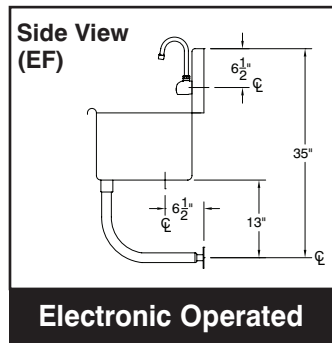
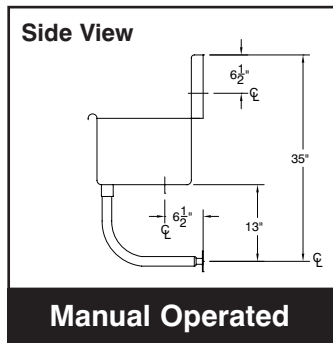
© ADVANCE TABCO, JANUARY 2018

22" SINGLE STATION SERVICE SINKS

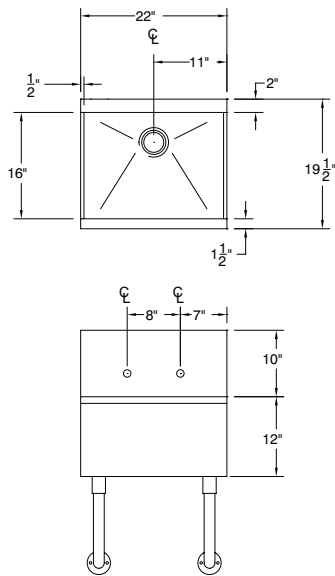
TOL ± .500"

FITTINGS SUPPLIED AS SHOWN

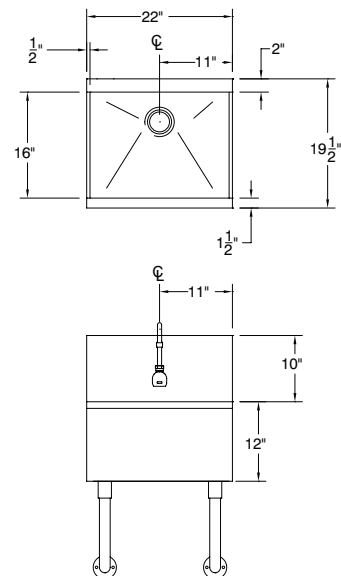
ALL DIMENSIONS ARE TYPICAL



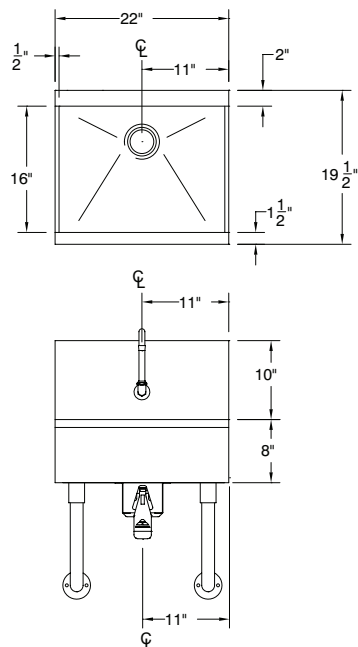
WSS-16-25 Manual Operated



WSS-16-25EF Electronic Operated



WSS-16-25KV Knee Operated



WSS-16-25FV Toe-Push Operated

