



The Signature of Quality

FEDERAL INDUSTRIES

A Standex Company

215 Federal Avenue
Belleville, Wisconsin 53508-9201

Phone: 800-356-4206

Fax: 608-424-3234

Email: Geninfo@Federalind.com

Website: Federalind.com

Project Name: _____

Item #: _____

Model #: _____ Qty: _____

Approval: _____

AIA #

SIS #

VISION SERIES - High Profile Self-Serve Refrigerated Merchandiser - 60"

Designed with impulse sales in mind. Get maximum return from an attention-grabbing merchandiser and increase profits.



Model VRSS3660C Shown
Solid Ends Shown

OPTIONAL ACCESSORIES

- ☐ Special External Laminate Finish
- ☐ White Interior (Including Shelving)
- ☐ Stainless Steel & White Interior (Including Shelves)
- ☐ Stainless Steel Exterior Finish
- ☐ Reflective End Glass
- ☐ Additional Lighted (LED) Shelf
- ☐ Deli Meat Pegs
- ☐ Sliding Rear Access Doors
- ☐ Removable Security Cover
- ☐ Solid Right/Left End Panels (mirrored)
- ☐ LED Lights Below Shelves
- ☐ 2 1/2" recessed (63.5mm) or 4" (101.6mm) Casters (Self Contained Models Only)
- ☐ Legs, 6", (152mm)
- ☐ Skirt with Casters or Legs
- ☐ Joining Kit for Continuous Line-Ups
- ☐ Condensate Evaporator Assembly (Field Install) (Separate 120V, 20A Circuit Required) (Remote Only)
- ☐ Remote Refrigeration With Condensate Pump (R449a Refrigerant, EEV Included)
- ☐ Front Cart Bumper
- ☐ Reversing Condenser Coil Fan

*Additional options available on the website and price list.

MODEL	DIMENSIONS (Includes End Panels)
<input type="checkbox"/> VRSS3660C	36 x 33 x 60 (in) 914 x 838 x 1524 (mm)
<input type="checkbox"/> VRSS4860C	47.25 x 33 x 60 (in) 1200 x 838 x 1524 (mm)
<input type="checkbox"/> VRSS6060C	59.25 x 33 x 60 (in) 1505 x 838 x 1524 (mm)
<input type="checkbox"/> VRSS7260C	71.25 x 33 x 60 (in) 1810 x 838 x 1524 (mm)

STANDARD FEATURES

Model Features

- Welded powder coated steel base fabrication
- Choice of six standard laminates on exterior
- Black powder coated metal front & rear grill
- Black Trim
- Stainless steel display deck
- Glass end or black solid ends
- Black interior back panel
- Moisture resistant end panel construction
- Front air intake / front & rear discharge
- Energy saving night curtain
- Adjustable Leg Levelers
- Cord & Plug

Refrigeration

- Electronic temperature control with on demand defrost
- Refrigeration controls maintain 38°-40°F (3.3°-4.4°C) Note: Case temperature will vary if the air curtain is disrupted.
- Thermometer
- R449a refrigerant

Shelving

- Two tiers of adjustable black metal shelves with black price tag molding. Shelves can be flat or slanted downwards at 10°

Lighting

- 3500K LED top light

Agency Approvals

- UL, C-UL and UL Sanitation listed to NSF-7, Type II conditions
- DOE 2017 compliant



Note: Information is subject to change at any time. Visit www.federalind.com for the most current specs.

VISION SERIES - High Profile Self-Serve Refrigerated Merchandiser - 60"

Product Specifications

Intended Environment: Type II (Self Contained and Remote) - Designed to operate in maximum ambient conditions of 80°F (24°C) and 55% relative humidity.

Zone	Intended Product To Be Displayed	Avg Prod Temp °F/°C
All	Packaged Refrigerated Products	38°F / (3.3°C)

DIMENSION: xx"/(mm)

DIMENSION TOLERANCE +/- 0.25 (6.4)

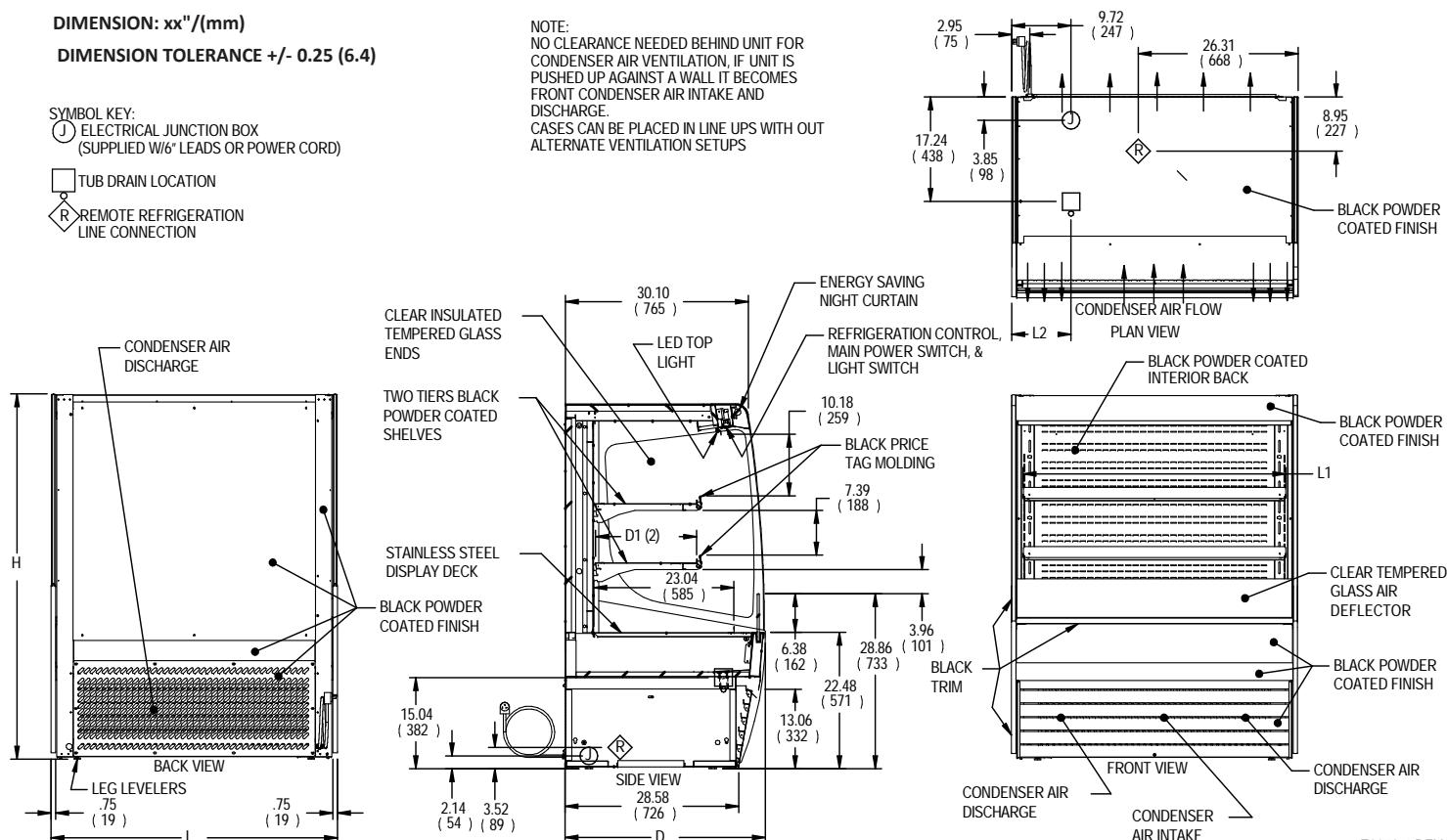
SYMBOL KEY:

SYMBOL KEY:
 (J) ELECTRICAL JUNCTION BOX
 (SUPPLIED W/6" LEADS OR POWER CORD)

 TUB DRAIN LOCATION

 REMOTE REFRIGERATION
LINE CONNECTION

NOTE:
NO CLEARANCE NEEDED BEHIND UNIT FOR
CONDENSER AIR VENTILATION, IF UNIT IS
PUSHED UP AGAINST A WALL IT BECOMES
FRONT CONDENSER AIR INTAKE AND
DISCHARGE.
CASES CAN BE PLACED IN LINE UPS WITH OUT
ALTERNATE VENTILATION SETUPS



F3973-1 REV -

MODEL	DIMENSIONS			TUB DRAIN	SHELVING			INTERIOR VOLUME CU FT	STANDARD CONNECTION CORD & PLUG				REFRIG	C.U. HP	CONDENSATE REMOVAL	SHIP WGHT	PERMANENT CONNECT		REFRIG	BTU'S @ 26"	CONDENSATE REMOVAL	SHIP WGHT						
	L	D	H	L2	# OF TIERS	L1	D1		ELECTRICAL	AMPS	MAX FUSE SIZE	NEMA CORD & PLUG					2 WIRE + GROUND					LBS	120/60/1		KILO	AMPS	MAX FUSE SIZE	LBS
	in	in	in	in		in	in		2 WIRE + GROUND								120/60/1											
	mm	mm	mm	mm		mm	mm																					
	mm	mm	mm	mm		mm	mm																					
VRSS3660C	36	33	60	6.74	2	32.25	16.634	13.98	120/60/1	12.7	20	NEMA 5-20P	R449A	3/4	INTEGRATED PAN	535	2.5	15	R449A	6,720	PUMP	490						
	914	838	1524	171		819	423									222												
VRSS4860C	47.25	33	60	13.49	2	43.25	16.634	18.48	208-240/60/1	12.5	20	NEMA 6-20P	R449A	1	INTEGRATED PAN	620	3.0	15	R449A	9,580	PUMP	580						
	1200	838	1524	343		1099	423									263												
VRSS6060C	59.25	33	60	14.12	2	55.25	16.634	23.39	208-240/60/1	13.5	20	NEMA 6-20P	R449A	1-1/4	INTEGRATED PAN	755	3.5	15	R449A	11,200	PUMP	710						
	1505	838	1524	359		1403	423									322												
VRSS7260C	71.25	33	60	20.12	2	67.25	16.634	28.30	208-240/60/1	13.7	20	NEMA 6-20P	R449A	1-1/4	INTEGRATED PAN	845	3.5	15	R449A	12,300	PUMP	800						
	1810	838	1524	511		1708	423									363												

- Due to continuing engineering improvements, specifications are subject to change without notice.
- Case temperature will vary if the air curtain is disrupted.



The Signature of Quality.

FEDERAL INDUSTRIES

A Standex Company

215 Federal Avenue Belleville, Wisconsin 53508-9201

Phone: 800-356-4206

Fax: 608-424-3234

Email: Geninfo@Federalind.com

Website: Federalind.com