



Outperform every day.™

**Project:**

**Item Number:**

**Quantity:**

## STANDARD TRADITIONAL STYLE BREATH GUARDS



### DESCRIPTION

Traditional Contemporary breath guards are both light weight for easy installation and strong for long-term use. These breath guards can be used with Signature Server® and over drop-ins.

### FEATURES

- Constructed of 1½" (3.2 cm) extruded aluminum, Traditional breath guards are both light weight for easy installation and strong for long-term use
- ¼" (6.4 mm) tempered glass is secured in a tight-fitting channel, creating a continuous, clean line from framework to glass
- Available in natural aluminum finish or 9 stylish powder-coated colors
- Mounts to stainless steel, solid surface and laminate countertops

### WARRANTY

All models shown come with Vollrath's standard warranty against defects in materials and workmanship. For full warranty details, please refer to [www.Vollrath.com](http://www.Vollrath.com).

### BUILD A MODEL NUMBER

Step 1* Select Base Item		
Length	For Use With Signature Server® With Stainless Steel Countertops	For Use Over Drop-ins and Signature Server® With Non-Stainless Steel Countertops
<b>Double-Sided Buffet</b>		
2-Well/Pan	—	PB89285
3-Well/Pan	89286	PB89286
4-Well/Pan	89287	PB89287
5-Well/Pan	89288	PB89288
6-Well/Pan	89289	PB89289
<b>Single-Sided Buffet with Top Shelf</b>		
2-Well/Pan	—	PB89280
3-Well/Pan	89281	PB89281
4-Well/Pan	89282	PB89282
5-Well/Pan	89283	PB89283
6-Well/Pan	89284	PB89284
<b>Single-Sided Buffet</b>		
2-Well/Pan	—	PB89270
3-Well/Pan	89271	PB89271
4-Well/Pan	89272	PB89272
5-Well/Pan	89273	PB89273
6-Well/Pan	89274	PB89274
<b>Cafeteria with Top Shelf</b>		
2-Well/Pan	—	PB89265
3-Well/Pan	89266	PB89266
4-Well/Pan	89267	PB89267
5-Well/Pan	89268	PB89268
6-Well/Pan	89269	PB89269
<b>Vertical Cafeteria</b>		
2-Well/Pan	—	PB89260
3-Well/Pan	89261	PB89261
4-Well/Pan	89262	PB89262
5-Well/Pan	89263	PB89263
6-Well/Pan	89264	PB89264

Step 2 Select Color	
Suffix	Color
99	Standard Aluminum
00	Polished Chrome
10	Brass
30	Black 80% Gloss
40	White Hammer
50	Copper Vein
60	Silver Vein

Optional Step 3 Select Accessories	
Not available for Single-Sided Buffet, Cafeteria and Vertical styles.	
Suffix	Length
<b>Fluorescent Lights</b>	
66	2-Well/Pan
67	3-Well/Pan
92	4-Well/Pan
93	5-Well/Pan
94	6-Well/Pan
<b>Incandescent Lights</b>	
05	2-Well/Pan
06	3-Well/Pan
07	4-Well/Pan
08	5-Well/Pan
09	6-Well/Pan
<b>Cayenne® Heat Strips</b>	
95	2-Well/Pan
68	3-Well/Pan
97	4-Well/Pan
98	5-Well/Pan
11	6-Well/Pan
<b>Cayenne® Heat Strips w/ Lights</b>	
13	2-Well/Pan
01	3-Well/Pan
02	4-Well/Pan
03	5-Well/Pan
04	6-Well/Pan

\*When ordering breath guards for Signature Server® bases with stainless steel countertops, 14 gauge countertops must be specified, will be supplied by Vollrath and added to the cost of the base. Please see the Vollrath Food Service List Prices book.

Due to continued product improvement, please consult [www.vollrath.com](http://www.vollrath.com) for current product specifications.



Outperform every day.™

[www.vollrath.com](http://www.vollrath.com)

**The Vollrath Company, L.L.C.**

1236 North 18th Street  
Sheboygan, WI 53081-3201 U.S.A.  
Main Tel: 800.624.2051 or 920.457.4851  
Main Fax: 800.752.5620 or  
920.459.6573

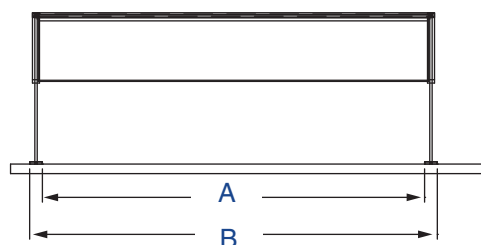
**Technical Services**

[techservices@vollrathco.com](mailto:techservices@vollrathco.com)  
Induction Products: 800.825.6036  
Countertop Warming Products:  
800.354.1970  
All Other Products: 800.628.0832

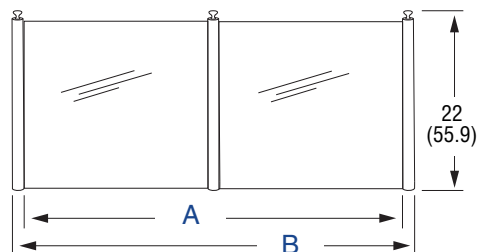
## STANDARD TRADITIONAL STYLE BREATH GUARDS

## DIMENSIONS (Shown in inches (cm))

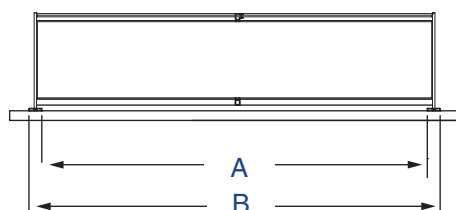
## Front View



Double-Sided Buffet, Single-Sided Buffet with Top Shelf and Single-Sided Buffet



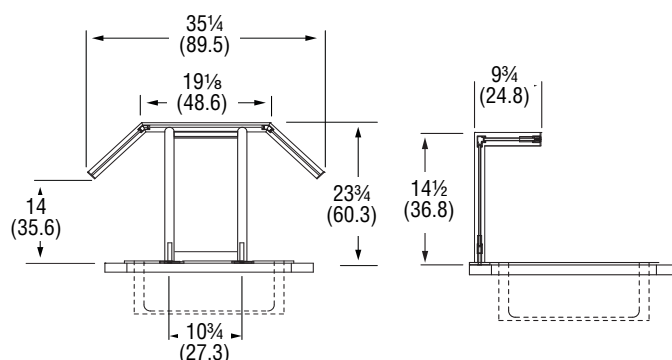
Vertical Cafeteria



Single-Sided Cafeteria with Top Shelf

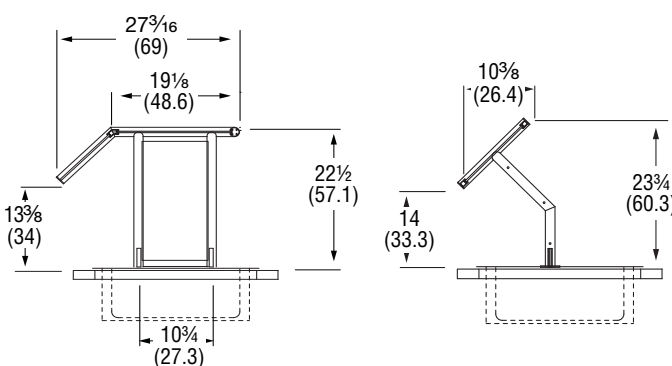
Style	(A) Inside of Flange to Inside of Flange	(B) Outside of Flange to Outside of Flange
<b>For Use With Signature Server® With Stainless Steel Countertops</b>		
Two-Well/Pan	28 (71.1)	30 (76.2)
Three-Well/Pan	41 (104.1)	45 (114.3)
Four-Well/Pan	55 (139.7)	59 (149.9)
Five-Well/Pan	69 (175.2)	73 (185.4)
Six-Well/Pan	83 (210.8)	87 (221)
<b>For Use Over Drop-ins or Signature Server® With Non-Stainless Steel Countertops</b>		
Two-Well/Pan	30½ (77.5)	34½ (87.6)
Three-Well/Pan	43 (109.2)	47 (119.4)
Four-Well/Pan	56¼ (142.9)	60¼ (153)
Five-Well/Pan	69½ (176.5)	73½ (186.7)
Six-Well/Pan	82¾ (210.2)	86¾ (220.3)

## Side View



Double-Sided Buffet

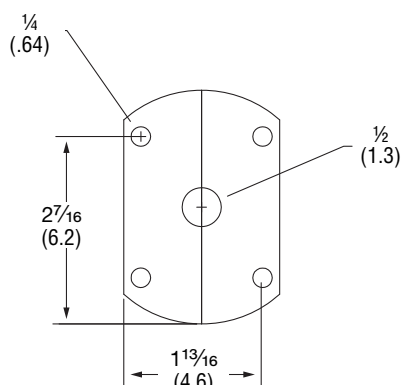
Cafeteria with Top Shelf



Single-Sided Buffet with Top Shelf

Single-Sided Buffet

## Base Plate



Outperform every day.™

[www.vollrath.com](http://www.vollrath.com)

**The Vollrath Company, L.L.C.**  
1236 North 18th Street  
Sheboygan, WI 53081-3201 U.S.A.  
Main Tel: 800.624.2051 or 920.457.4851  
Main Fax: 800.752.5620 or  
920.459.6573

**Technical Services**  
[techservicereps@vollrathco.com](mailto:techservicereps@vollrathco.com)  
Induction Products: 800.825.6036  
Countertop Warming Products:  
800.354.1970  
All Other Products: 800.628.0832



Outperform every day.™

Project:

Item Number:

Quantity:

Standard Contemporary Style Breath Guards

The Vollrath Company, L.L.C.

## STANDARD CONTEMPORARY STYLE BREATH GUARDS



Double-Sided Buffet



Single-Sided Buffet



Single-Sided Buffet  
with Top Shelf



Cafeteria with Top Shelf

### DESCRIPTION

Contemporary breath guards are both light weight for easy installation and strong for long-term use. These breath guards can be used with Signature Server® and over drop-ins.

### FEATURES

- 1" (2.5 cm) stainless steel tubular construction is sleek, durable, easy to clean and enhances the food presentation
- Panels are 3/8" (9.5 mm) tempered glass with polished ends
- Available in brushed stainless steel, brass or black
- Mounts to stainless steel, solid surface and laminate countertops

### WARRANTY

All models shown come with Vollrath's standard warranty against defects in materials and workmanship. For full warranty details, please refer to [www.Vollrath.com](http://www.Vollrath.com).

### BUILD A MODEL NUMBER

Step 1* Select Base Item		
Length	For Use With Signature Server® With Stainless Steel Countertops	For Use Over Drop-ins and Signature Server® With Non-Stainless Steel Countertops
<b>Double-Sided Buffet</b>		
2-Well/Pan	98663	CB98663
3-Well/Pan	98637	CB98637
4-Well/Pan	98638	CB98638
5-Well/Pan	98639	CB98639
6-Well/Pan	98640	CB98640
<b>Single-Sided Buffet with Top Shelf</b>		
2-Well/Pan	98662	CB98662
3-Well/Pan	98651	CB98651
4-Well/Pan	98652	CB98652
5-Well/Pan	98653	CB98653
6-Well/Pan	98654	CB98654
<b>Single-Sided Buffet</b>		
2-Well/Pan	98661	CB98661
3-Well/Pan	98633	CB98633
4-Well/Pan	98634	CB98634
5-Well/Pan	98635	CB98635
6-Well/Pan	98636	CB98636
<b>Cafeteria with Top Shelf</b>		
2-Well/Pan	98660	CB98660
3-Well/Pan	98650	CB98650
4-Well/Pan	98626	CB98626
5-Well/Pan	98627	CB98627
6-Well/Pan	98628	CB98628

\* When ordering breath guards for Signature Server® bases with stainless steel countertops, 14 gauge countertops must be specified, will be supplied by Vollrath and added to the cost of the base.

### Step 2 Select Color

Suffix	Color
99	Stainless Steel
10	Brass
30	Black 80% Gloss

### Optional Step 3 Select Accessories

Not available for Single-Sided Buffet style	
Suffix	Length
<b>Fluorescent Lights</b>	
Not Available for 2-Well/Pan	
45	3-Well/Pan
14	4-Well/Pan
46	5-Well/Pan
51	6-Well/Pan
<b>Incandescent Lights</b>	
N/A	
<b>Cayenne® Heat Strips</b>	
52	2-Well/Pan
53	3-Well/Pan
54	4-Well/Pan
55	5-Well/Pan
56	6-Well/Pan
<b>Cayenne® Heat Strips w/ Lights</b>	
57	2-Well/Pan
58	3-Well/Pan
59	4-Well/Pan
90	5-Well/Pan
91	6-Well/Pan

Due to continued product improvement, please consult [www.vollrath.com](http://www.vollrath.com) for current product specifications.

Agency  
Listings



Approvals

Date



Outperform every day.™  
[www.vollrath.com](http://www.vollrath.com)

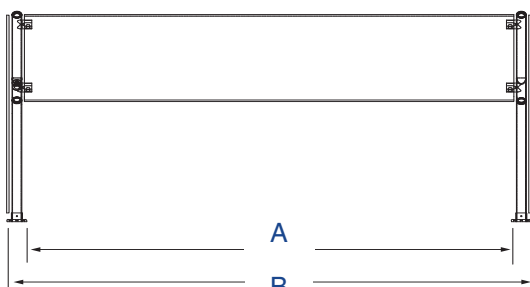
The Vollrath Company, L.L.C.  
1236 North 18th Street  
Sheboygan, WI 53081-3201 U.S.A.  
Customer Service: 800.628.0830  
Canada Customer Service: 800.695.8560  
Main Fax: 800.752.5620 or

Technical Services: 800.628.0832  
Technical Services Fax:  
920.459.5462

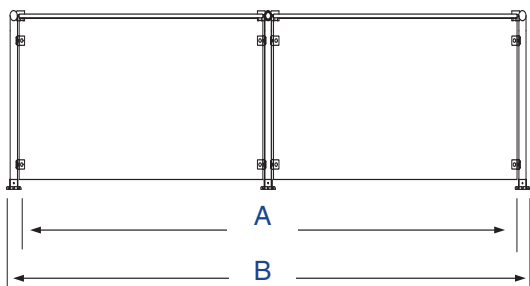
## STANDARD CONTEMPORARY STYLE BREATH GUARDS

## DIMENSIONS (shown in inches (cm))

Front View

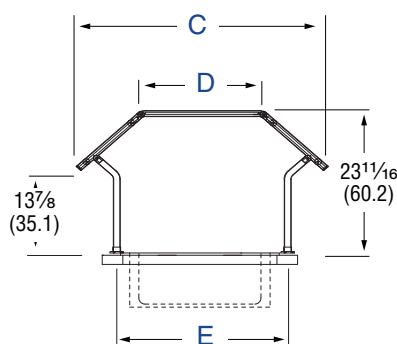


Double-Sided Buffet, Single-Sided Buffet with Top Shelf and Single-Sided Buffet

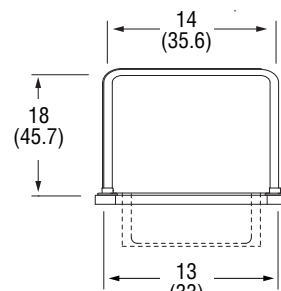


Single-Sided Cafeteria with Top Shelf

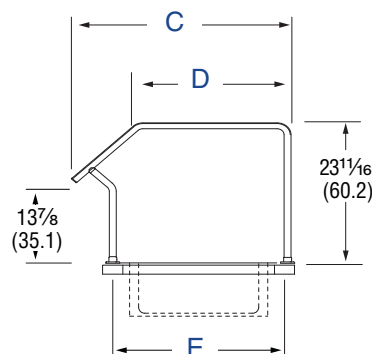
Side View



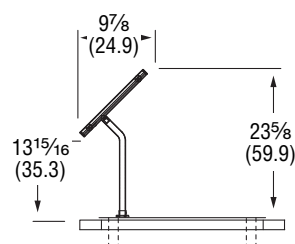
Double-Sided Buffet



Cafeteria with Top Shelf



Single-Sided Buffet with Top Shelf

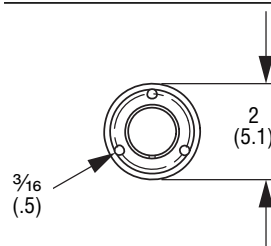


Single-Sided Buffet

Style	(A) Inside of Flange to Inside of Flange	(B) Outside of Flange to Outside of Flange
<b>For Use With Signature Server® With Stainless Steel Countertops</b>		
Two-Well/Pan	23 (58.4)	27 (68.6)
Three-Well/Pan	41 (104.1)	45 (114.3)
Four-Well/Pan	55 (139.7)	59 (149.9)
Five-Well/Pan	69 (175.3)	73 (185.4)
Six-Well/Pan	83 (210.8)	87 (221)
<b>For Use Over Drop-ins or Signature Server® With Non-Stainless Steel Countertops</b>		
Two-Well/Pan	30 1/2 (77.5)	34 1/2 (87.6)
Three-Well/Pan	43 (109)	47 (119.4)
Four-Well/Pan	56 1/4 (142.9)	60 1/4 (153)
Five-Well/Pan	69 1/2 (176.5)	73 1/2 (186.7)
Six-Well/Pan	82 3/4 (210.2)	86 3/4 (220.3)

Style	For Use With	C	D	E
Double-Sided Buffet	For use with Signature Server® with stainless steel countertops	36 13/16 (93.5)	19 3/16 (48.8)	25 (63.5)
	For use over drop-in or Signature Server® with non-stainless steel countertops	40 13/16 (103.6)	23 3/16 (58.9)	29 (73.7)
Single-Sided Buffet with Top Shelf	For use with Signature Server® with stainless steel countertops	31 15/16 (81)	21 1/4 (54)	25 (63.5)
	For use over drop-in or Signature Server® with non-stainless steel countertops	35 15/16 (91.2)	25 1/4 (64.1)	29 (73.7)

Base Plate



Outperform every day.™

www.vollrath.com

The Vollrath Company, L.L.C.  
1236 North 18th Street  
Sheboygan, WI 53081-3201 U.S.A.  
Customer Service: 800.628.0830  
Canada Customer Service: 800.695.8560  
Main Fax: 800.752.5620 or

Technical Services: 800.628.0832  
Technical Services Fax:  
920.459.5462



Outperform every day.™

Project:

Item Number:

Quantity:

Standard Progressive Style Breath Guards

The Vollrath Company, L.L.C.

## STANDARD PROGRESSIVE STYLE BREATH GUARDS



Double-Sided Buffet



Single-Sided Buffet  
with Top Shelf



Single-Sided Buffet



Cafeteria with Top Shelf

### DESCRIPTION

Progressive breath guards are both light weight for easy installation and strong for long-term use. These breath guards can be used with Signature Server® and over drop-ins.

### FEATURES

- End frames constructed of 3/8" (1 cm) water-jet cut aluminum with extruded aluminum glass frames
- 1/4" (6.4 mm) tempered glass is secured in a tight-fitting channel, creating a continuous, clean line from framework to glass
- Color choices include standard Gray Hammer Semi-gloss or nine stylish powder-coated color

### WARRANTY

All models shown come with Vollrath's standard warranty against defects in materials and workmanship. For full warranty details, please refer to [www.Vollrath.com](http://www.Vollrath.com).

### BUILD A MODEL NUMBER

Step 1* Select Base Item			Step 2 Select Color		Optional Step 3 Select Accessories	
Length	For Use With Signature Server® With Stainless Steel Countertops	For Use Over Drop-ins and Signature Server® With Non-Stainless Steel Countertops	Suffix	Color	Not available for Single-Sided Buffet style.	
					Suffix	Length
Double-Sided Buffet			99	Std. Gray Hammer	Fluorescent Lights	
2-Well/Pan	98400	GB98400			25	2-Well/Pan
3-Well/Pan	98401	GB98401			26	3-Well/Pan
4-Well/Pan	98402	GB98402			27	4-Well/Pan
5-Well/Pan	98403	GB98403			28	5-Well/Pan
6-Well/Pan	98404	GB98404	10	Brass	29	6-Well/Pan
Single-Sided Buffet with Top Shelf			20	Blk Hammer Semi-Gloss	Incandescent Lights	
2-Well/Pan	98405	GB98405			15	2-Well/Pan
3-Well/Pan	98406	GB98406			31	3-Well/Pan
4-Well/Pan	98407	GB98407			32	4-Well/Pan
5-Well/Pan	98408	GB98408			33	5-Well/Pan
6-Well/Pan	98409	GB98409	40	White Hammer	34	6-Well/Pan
Single-Sided Buffet			50	Copper Vein	Cayenne® Heat Strips	
2-Well/Pan	98410	GB98410			35	2-Well/Pan
3-Well/Pan	98411	GB98411			36	3-Well/Pan
4-Well/Pan	98412	GB98412			37	4-Well/Pan
5-Well/Pan	98413	GB98413			38	5-Well/Pan
6-Well/Pan	98414	GB98414	70	Black/White	39	6-Well/Pan
Cafeteria with Top Shelf			80	Silver Hammertone	Cayenne® Heat Strips w/ Lights	
2-Well/Pan	98415	GB98415			12	2-Well/Pan
3-Well/Pan	98416	GB98416			41	3-Well/Pan
4-Well/Pan	98417	GB98417			42	4-Well/Pan
5-Well/Pan	98418	GB98418			43	5-Well/Pan
6-Well/Pan	98419	GB98419			44	6-Well/Pan

\* When ordering breath guards for Signature Server® bases with stainless steel countertops, 14 gauge countertops must be specified, will be supplied by Vollrath and added to the cost of the base. Please see the Vollrath Food Service List Prices book.

Agency  
Listings



Due to continued product improvement, please consult [www.vollrath.com](http://www.vollrath.com) for current product specifications.

Approvals

Date



Outperform every day.™

[www.vollrath.com](http://www.vollrath.com)

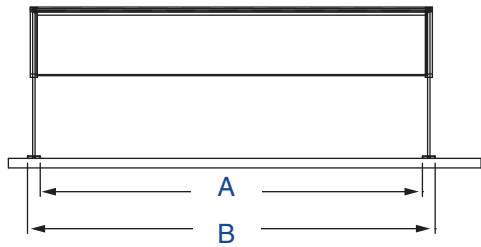
The Vollrath Company, L.L.C.  
1236 North 18th Street  
Sheboygan, WI 53081-3201 U.S.A.  
Customer Service: 800.628.0830  
Canada Customer Service: 800.695.8560  
Main Fax: 800.752.5620 or 920.459.6573

Technical Services: 800.628.0832  
Technical Services Fax: 920.459.5462

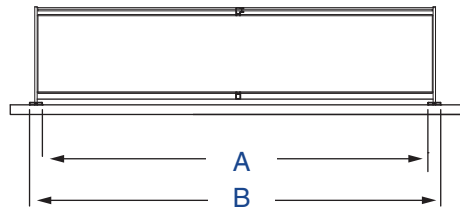
STANDARD PROGRESSIVE STYLE BREATH GUARDS

DIMENSIONS (Shown in inches (cm))

Front View



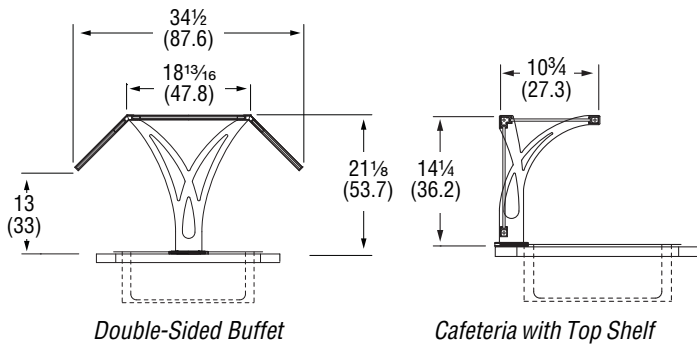
Double-Sided Buffet, Single-Sided Buffet with Top Shelf and Single-Sided Buffet



Single-Sided Cafeteria with Top Shelf

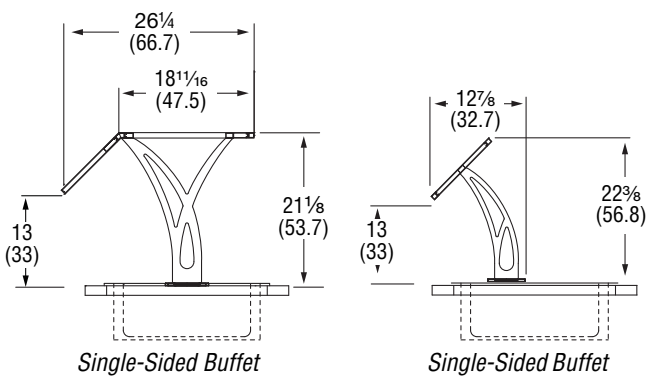
Style	(A) Inside of Flange to Inside of Flange	(B) Outside of Flange to Outside of Flange
For Use With Signature Server® With Stainless Steel Countertops		
Two-Well/Pan	26 (66)	30 (76.2)
Three-Well/Pan	41 (104.1)	45 (114.3)
Four-Well/Pan	55 (139.7)	59 (149.9)
Five-Well/Pan	69 (175.2)	73 (185.4)
Six-Well/Pan	83 (210.9)	87 (221)
For Use Over Drop-ins or Signature Server® With Non-Stainless Steel Countertops		
Two-Well/Pan	30½ (77.5)	34½ (87.6)
Three-Well/Pan	43 (109.2)	47 (119.4)
Four-Well/Pan	56¼ (142.9)	60¼ (153)
Five-Well/Pan	69½ (176.5)	73½ (186.7)
Six-Well/Pan	82¾ (210.2)	86¾ (220.3)

Side View



Double-Sided Buffet

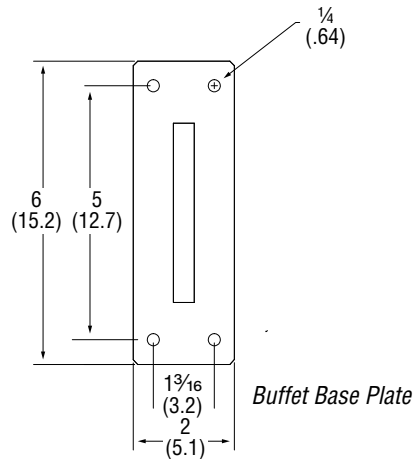
Cafeteria with Top Shelf



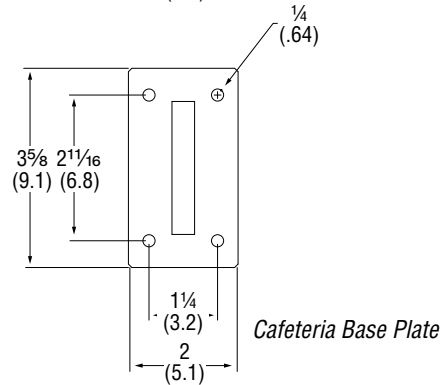
Single-Sided Buffet with Top Shelf

Single-Sided Buffet

Base Plate



Buffet Base Plate



Cafeteria Base Plate



Outperform every day.™

[www.vollrath.com](http://www.vollrath.com)

The Vollrath Company, L.L.C.  
1236 North 18th Street  
Sheboygan, WI 53081-3201 U.S.A.  
Customer Service: 800.628.0830  
Canada Customer Service: 800.695.8560  
Main Fax: 800.752.5620 or 920.459.6573

Technical Services: 800.628.0832  
Technical Services Fax: 920.459.5462