

PanaMax™ Dome Cover



- Patented low-profile design complements any chafer, serving line, or buffet application
- Durable ergonomic nylon handle is heat resistant up to 475°F (246°C)
- Mirror-finished stainless looks great and is easy to clean and maintain

ITEM #	DESCRIPTION	DIMENSIONS: IN (CM)	CASE LOT
49339	Full-size	21 x 13 x 4½ (53.3 x 33 x 11.4)	1

Solid Dome Cover



- Satin-finished, 300 series stainless steel
- Black Kool-Touch® handle stays comfortable to 220°F (104.4°C)
- Dome is 2½" (6.3 cm) high



ITEM #	DESCRIPTION	DIMENSIONS: IN (CM)	CASE LOT
77200	Full-size	21 x 12½ x 3¼ (53.3 x 32.7 x 9.5)	1
77500	Half-size	12½ x 10½ x 3¼ (32.7 x 27 x 9.5)	1

Hinged Covers

- Stainless steel
- Convenient hinge allows easy access to food without having to remove entire cover



ITEM #	DESCRIPTION	DIMENSIONS: IN (CM)	CASE LOT
77430	Full-size – flat	20⅞ x 12⅞ x ½ (53.2 x 32.7 x 1.3)	3
77400	Full-size – dome	21 x 12⅞ x 2½ (53.3 x 32.7 x 6.4)	1

Cover-All™ Aluminum Covers

- Use in place of foil or plastic wrap to eliminate ongoing disposable costs
- Two half-size covers fit full-size pan
- Recessed for more secure stacking and nesting



Note: Not recommended as an alternative to stainless steel covers.

ITEM #	DESCRIPTION	DIMENSIONS: IN (CM)	CASE LOT
68020	Full-size	20¾ x 12¾ (52.7 x 32.4)	6
68010*	Half-size	10¾ x 12¾ (26.4 x 32.4)	3

**Two per full-size pan recommended*

Super Pan® Cold Cover

- 300 series stainless steel
- Store in freezer overnight and use in place of standard transport covers to keep cold foods chilled

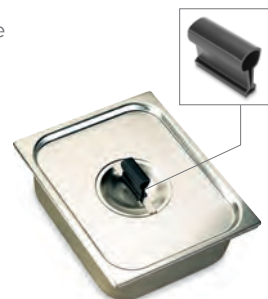


ITEM #	PAN SIZE	DIMENSIONS: IN (CM)	CASE LOT
70009	1/1	21 x 12⅞ x 1⅞ (53.3 x 32.9 x 2.4)	6

Cold cover will only fit Super Pan V® transport pans

Kool-Touch Clip-On Handle

- Insulated black handle clips onto the recessed handle on stainless steel stockpot covers, inset covers, bain marie covers, and steam table pan covers (down to sixth-size)



ITEM #	DESCRIPTION	DIMENSIONS: IN (CM)	CASE LOT
52970	Clip-on handle	2 x ⅞ x 1⅞ (5 x 2.2 x 4.1)	12