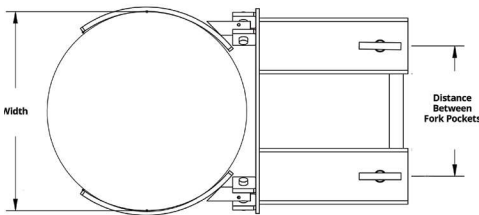




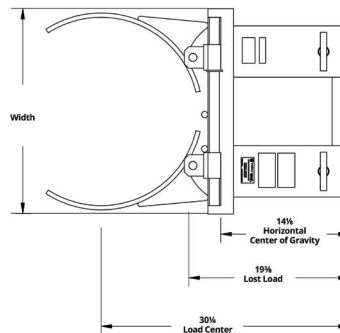
- Efficiently transport drums throughout facility.
- Built-in T-bolts screw down to secure unit to forklift forks.
- Up to 1,500 lb. capacity (depending on model).
- Heavy gauge steel construction.
- Premium powder coat paint finish.
- Ships fully assembled, ready to use.
- Made in the U.S.A.

Economy



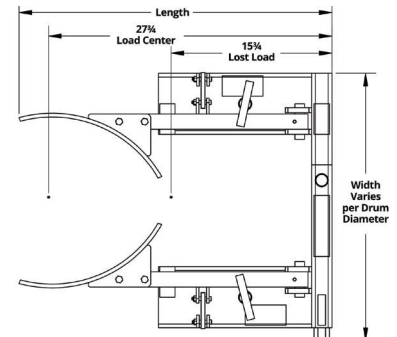
- Knuckle-gripping jaws.
- Secures drum using natural pressure.
- Fixed jaws for use with 55 gallon steel drums.
- 800 lb. capacity.

Industrial



- Cam-actuated jaws.
- Secures drum automatically when lifting.
- Adjustable, use with 30 or 55 gallon steel drums.
- 1,500 lb. capacity.

Deluxe



- Cam-actuated jaws.
- Auto-grip lifting and release.
- Adjustable slide ensures secure connection.
- Lined jaws (steel model) provide superior grip.
- Up to 1,500 lb. capacity (steel model).

Steel & Plastic Mechanical Drum Forklift Attachments

Model #	Style	Drum Capability			Fork Pocket Size L x W x H	Distance Between Fork Pockets	Dimensions L x W x H	Capacity (lbs.)	Weight (lbs.)
		Type	Gallons	Diameter					
F87398A2	Economy	Steel	55	24"	16 ³ / ₄ x 5 ⁵ / ₈ x 1 ⁵ / ₈ "	14"	36 x 22 x 4"	800	53
F89743	Industrial	Steel	30/55	18" or 24"			36 x 24 x 7"	1,500	90
F86145B0	Deluxe	Steel	30/55/85	18 - 28"		13 - 25"	31 x (25 - 37) x 7"	1,500	103
F86165A5		Plastic						1,000	103

Distance Between Fork Pockets is measured center to center.