



BEVERAGE-AIR®

| | |
|-----------------|------------|
| Project: _____ | AIA# _____ |
| Item: _____ | |
| Location: _____ | SIS# _____ |
| Approved: _____ | |

UCRD60AHC UNDERCOUNTER REFRIGERATOR DRAWERS

UNDERCOUNTER REFRIGERATOR DRAWERS

UCRD60AHC Undercounter Refrigerator With Drawers
Hydrocarbon Series

MODEL:
UCRD60AHC-4



7 Year Parts/Labor Warranty
7 Year Compressor Warranty

CABINET CONSTRUCTION

- Stainless steel front, sides, top, drawers and grille (galvanized steel back & bottom)
- Interior liner is made of corrosion resistant aluminum
- Full electronic control
- Undercounter feature a 1/2" thick sub-top
- Interior thermometer is standard
- Snap-in drawer gaskets
- Upper and lower pull-out drawers accommodate 6" deep pans
- Stainless steel drawer frames supported on telescoping drawer slides
- Drawer slides include locking mechanism that prevents drawer from being inadvertently pulled off cabinet
- 6" Casters, (2) with brakes standard

OPTIONS & ACCESSORIES

- Stainless steel back
- Stainless steel interior
- 3" Casters
- 6" Legs (stainless steel, black or seismic/flange)
- Low profile casters
- Roller kit
- Remote option* (see note on back on page)

REFRIGERATION SYSTEM

- Uses environmentally friendly, energy efficient R290 refrigerant, and meets all regulatory requirements for CARB, SNAP, DOE & more
- Adaptive defrost
- Epoxy coated evaporator coil
- Refrigerators capable of maintaining product temperature between 36°F and 38°F



Please verify qualifying units by visiting:
www.energystar.gov/cfs

3779 Champion Blvd., Winston-Salem, NC 27105
1-888-845-9800 Fax: 1-336-245-6453
Beverage-Air.com Sales@bevair.com

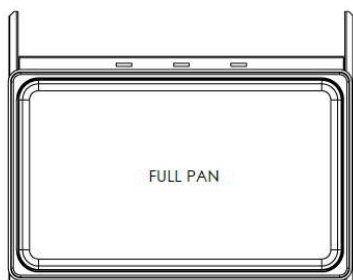


BEVERAGE-AIR®

| MODEL | UCRD60AHC-4 |
|------------------------------------|----------------------|
| EXTERNAL DIMENSIONAL DATA | |
| Width Overall | 60" |
| Depth Overall with Handle & Bumper | 32" |
| Height Overall with 6" Casters | 34 5/8" |
| Number of Drawers | 4 |
| Depth with Drawer Extended | 47 1/2" |
| Drawer Openings | (4) 22 5/8" x 9 3/8" |
| INTERNAL DIMENSIONAL DATA | |
| NET Capacity (cubic ft.) | 14.4 |
| Internal Width Overall (in) | 56" |
| Internal Depth Overall (in) | 15 3/8" |
| Internal Height Overall (in) | 23" |
| ELECTRICAL DATA | |
| Full Load Amperes | 3.0 |
| REFRIGERATION DATA | |
| Horsepower | 1/5 |
| Capacity (BTU/Hr) | 1350 |
| Heat Rejection (BTU/Hr) | 2025 |
| Charge (lbs/grams/ounces) | 0.243 / 110 / 3.89 |
| SHIPPING DATA | |
| Gross Weight - Crated | 356 lbs |
| Height - Crated | 39" |
| Width - Crated | 63" |
| Depth - Crated | 35" |

*NOTE: Remote units are field wired and come with 6" legs.
Refrigerant must be specified at time of order.

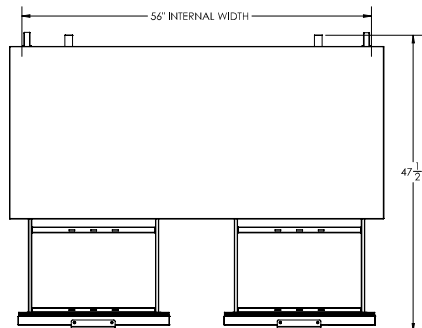
We reserve the right to change specifications and product design without notice.
Such revisions do not entitle the buyer to corresponding changes, improvements,
additions or replacements for previously purchased equipment. Dimensional
tolerances +/- 1/4". Metric dimensions (MM).



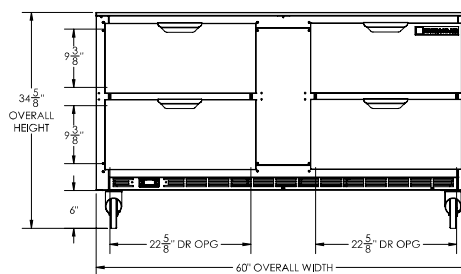
Undercounter Refrigerator with Drawers Model: UCRD60AHC-4

Model Views

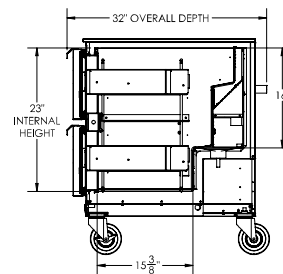
Required Clearance: 3" Bottom & 2" Rear



PLAN VIEW



ELEVATION VIEW



SIDE VIEW

ELECTRICAL CONNECTION



115/60/1
NEMA 5-15P

Unit pre-wired at factory
and include 8' long cord
and plug set.



3779 Champion Blvd., Winston-Salem, NC 27105 1-888-845-9800 Fax: 1-336-245-6453 Beverage-Air.com Sales@bevair.com

