

4 Tier Utility Shelf

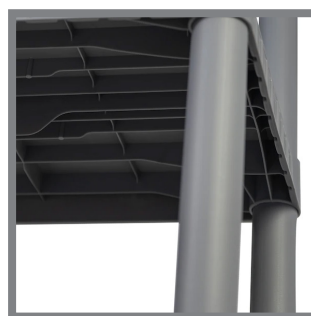


Features & Benefits

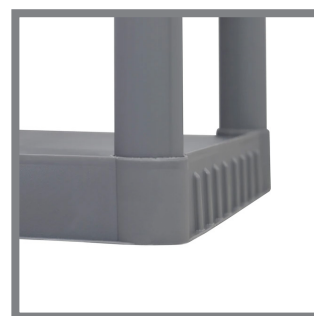
- Durable, solid plastic shelf is easy to clean.
- Holds up to 50 lbs per shelf, when evenly distributed.
- Will not rust, dent, chip, or peel.
- Easily assembles in minutes.
- Great for indoor use, especially small spaces.
- 100% Recyclable

Product Specifications

Model Number	4TGRY14X34
UPC	8 47170 00024 5
Dimensions	34.75"L x 14.75"W x 52"H
Capacity	50 lbs. per shelf, evenly distributed
Color	Grey
Pallet Quantity	20
Ships From	Ohio



STRUCTURAL RIBS



EASY TO ASSEMBLE



SOLID SHELVING



GREAT FOR SMALL SPACES