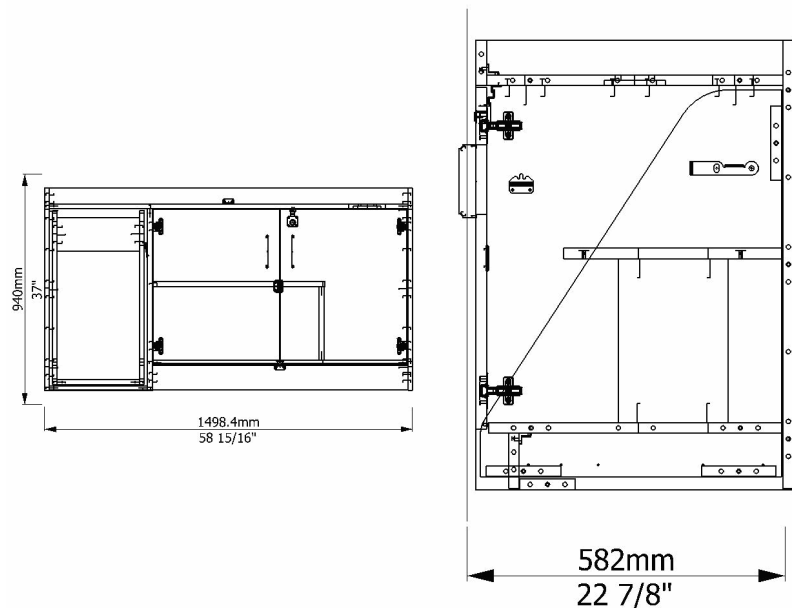



Banding	
Description:	Total Length:
19.2 PVC CBTR 1.0	16
19.2 PVC DDTR 1.0	17
19.2 PVC IOTR 1.0	38

Rev	Comment	DateEntered	EnteredBy
		08/10/2023	scottm

Parts							Board
Description:	Material:	Prog 1:	Prog 2:	Qty:	Width:	Length:	Qty:
Back Stair Rail	19.2 PB CBIN MEL CBIN MEL	1T3A9Q03		1	137	335.9	0.014
Base Left Door	19.2 PB DDEX MEL DDEX MEL	1T3A9801		1	515.35	627.1	0.167
Base Right Door	19.2 PB DDEX MEL DDEX MEL	1T3A9E02		1	515.35	627.1	0.167
Base Left FE	19.2 PB CBEX MEL CBEX MEL	1T3A8Q01		1	582	825	0.25
Base Right FE	19.2 PB CBEX MEL CBEX MEL	1T3A8Q02		1	582	825	0.25
Bottom	19.2 PB INTO MEL INTO MEL	1T3A8Q03		1	540.3	1040.5	0.25
Bottom Rail	19.2 PB CBIN MEL CBIN MEL	1T3A9Q08		1	101.6	400.3	0.015
Bottom Stair Rail	19.2 PB CBIN MEL CBIN MEL	1T3A9Q04		1	137	335.9	0.014
Bottom Stair Rail	19.2 PB CBIN MEL CBIN MEL	1T3A9Q05		1	137	335.9	0.014
Fixed Shelf	19.2 PB INTO MEL INTO MEL	1T3A8Q07		1	402	703.5	0.111
Thick Back	19.2 PB INTO MEL INTO MEL	1T3A8Q0B		1	823	1460	1
Toe Kick	19.2 PB INTO MEL INTO MEL	1T3A8Q0C		1	101.6	1040.5	0.038
Top	19.2 PB INTO MEL INTO MEL	1T3A8Q06		1	543.6	1460	0.5
Vert Rail Front	19.2 PB INTO MEL INTO MEL	1T3A8Q0D		1	83.5	1460	0.062
Vertical Lower	19.2 PB INTO MEL INTO MEL	1T3A8Q08		1	201	300.8	0.02
Vertical Stair L	19.2 PB CBIN MEL CBIN MEL	1T3A9Q01		1	552	710	0.167
Vertical Stair R	19.2 PB CBIN MEL CBIN MEL	1T3A9Q02		1	552	710	0.167
Vertical Stairs	19.2 PB INTO MEL INTO MEL	1T3A8Q0A	1T3A8R0A	1	562.8	741.5	0.167

Hardware			
Item Number:	Description:	Qty:	Length:
0063-0004000000	Foot Case Large #29-143 Black	1	0
0161-0185000000	Pull Advtg Bntwr 128mm MtNi	2	0
0261-0489000000	Fstrn Rafix Bolt - 5dia x 8.0	2	0
0261-1041000001	Lock Core NI SIAM	1	0
0261-1042000000	Lock Deadbolt NI w/Bezel SIAM for Door	1	0
0261-2087000000	Strike Lock Plate Zn Angle	1	0
0261-2336000000	Latch Stairs - Stair Member With Thru Drilling	1	0
0261-2337000000	Latch Stairs - Cab Member With Drilling	1	0
0263-0269361000	Fstrn Tabor Prl Corner Block	2	0
0263-0296000000	Catch Plate Door Black	1	0
0263-0691000000	Fstrn Push In Xmas Tree Clip	2	0
0263-1104000000	Bumper Press-In 8 x 2.5mm Head	2	0
0263-2367000000	Fstrn Rafix Cam 16mm White n-R	2	0
0361-0333000000	Hinge Mtg Plate Blum 0mm	4	0
0361-0343000000	Hinge Blum IS 110 Soft Dowel	4	0
0461-0723000SET	Slid Pr BB RH-4532 500 Zn Flex SET	1	0
0861-0063000000	Screw Tapp PhTr Zinc #8 X .62	32	0
0861-0082000000	Screw Tapp PhFl Zinc #6 X .62	8	0
0861-0203000000	Screw Conn HxDc Ni 7mmx 50mm	16	0
0861-0205000000	Screw Conn HxFl Zinc 7mmx 50mm	8	0
0861-0252000000	Screw Tapp PhFl Zinc #7 X .625	8	0
0861-0522000000	Screw Tapp PhTr Zinc #10x .75	2	0
0861-0532000000	Screw Tapp PhFl Zinc #7 X .875	4	0
0863-0779000000	Spacer Nylon p3125ODx p125inL	2	0
0964-0451000000	Label Blum Hinge Adjustment	1	0
0964-0455000000	Label Child Attn Warning	1	0
0964-2112000000	Label TM Stairs Safety Warning	1	0
0964-2688000000	Label Check For Damaged/Lost	1	0
0964-3009000000	Label This Side Up S-3513	1	0
0964-3053000000	Form Registration Card Totmate	1	0
0964-3113000000	Instr Change Top Care	1	0
1063-0791043000	Top Change Tbl ABS 5' RSnk 7"D	1	0
1063-0822043000	TM Tear Off ABS .197x 1x 21	1	0
1063-0880043000	Stairs Walk-Up 35in White	1	0
1064-0002000000	Paper Roll 18InX 125ft	1	0
0661-1068000000	Plbg Strainer Flat SS #SS-400	1	0
0661-1258000000	Fauc PEER P288 Gsnk 4"	1	0
0663-1069000000	Plbg Elbow PVC 16x 1.5" Tail Piece	1	0
0861-0036000000	Screw Mach PhTr Zinc 8-32x1.00	4	0
0861-0042000000	Screw Tapp PhFl Zinc #8 X .68	2	0



Toddler Walk Up Changing Table		
	Date: 8/10/2023	Part Number: <b>TM8543A</b>
	DRAWN BY: scottm	
Rev:		Drawing Number: <b>TM8543A</b>

<b>Packaging</b>					
<b>Item Number:</b>	<b>Description:</b>	<b>Qty:</b>	<b>Width:</b>	<b>Height:</b>	<b>Depth:</b>
0963-3077000000	Pkg Foam Corner 4x2x3 1.5# EPS	8	0	0	0
0964-3081000000	Pkg Honey Angle 1.5T x 6W x 7L	4	0	0	0
0964-3171603824	Pkg P28K Try/Slv 60x38x24	1	0	0	0