

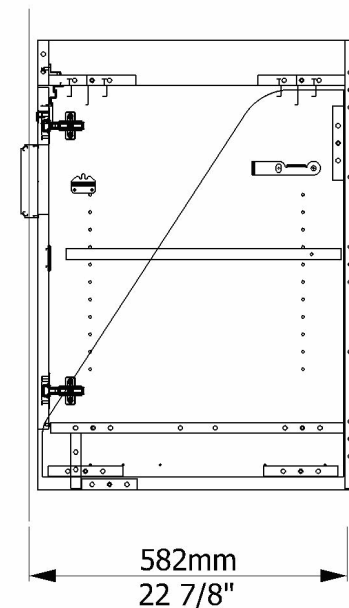
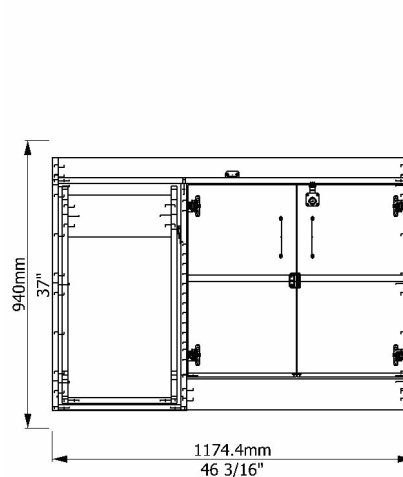
Banding	
Description:	Total Length:
19.2 PVC CBTR 1.0	18
19.2 PVC DDTR 1.0	15
19.2 PVC IOTR 1.0	28

Parts							Board
Description:	Material:	Prog 1:	Prog 2:	Qty:	Width:	Length:	Qty:
Back Stair Rail	19.2 PB CBIN MEL CBIN MEL	1TJ0KW03		1	137	335.9	0.014
Base Left Door	19.2 PB DDEX MEL DDEX MEL	1TJ0KE01		1	353.35	627.1	0.083
Base Right Door	19.2 PB DDEX MEL DDEX MEL	1TJ0KK02		1	353.35	627.1	0.083
Base Adj Shelf	19.2 PB INTO MEL INTO MEL	1VDYHQ02		1	505	710.5	0.167
Base Left FE	19.2 PB CBEX MEL CBEX MEL	1TJ0JW01		1	582	825	0.25
Base Right FE	19.2 PB CBEX MEL CBEX MEL	1TJ0JW02		1	582	825	0.25
Bottom	19.2 PB INTO MEL INTO MEL	1TJ0JW03		1	540.3	716.5	0.167
Bottom Rail	19.2 PB CBIN MEL CBIN MEL	1TJ0KW08		1	101.6	400.3	0.015
Bottom Stair Rail	19.2 PB CBIN MEL CBIN MEL	1TJ0KW04		1	137	335.9	0.014
Bottom Stair Rail	19.2 PB CBIN MEL CBIN MEL	1TJ0KW05		1	137	335.9	0.014
Horz Rail Back	19.2 PB INTO MEL INTO MEL	1TJ0JW05		1	159.6	1136	0.056
Horz Rail Front	19.2 PB INTO MEL INTO MEL	1TJ0JW04		1	159.6	1136	0.056
Thick Back	19.2 PB INTO MEL INTO MEL	1TJ0JW0B		1	823	1136	0.5
Toe Kick	19.2 PB INTO MEL INTO MEL	1TJ0JW0C		1	101.6	716.5	0.026
Vert Rail Front	19.2 PB INTO MEL INTO MEL	1TJ0JW0D		1	83.5	1136	0.031
Vertical Stair L	19.2 PB CBIN MEL CBIN MEL	1TJ0KW01		1	552	710	0.083
Vertical Stair R	19.2 PB CBIN MEL CBIN MEL	1TJ0KW02		1	552	710	0.083
Vertical Stairs	19.2 PB INTO MEL INTO MEL	1TJ0JX0A		1	562.8	741.5	0.167

Hardware			
Item Number:	Description:	Qty:	Length:
0063-0004000000	Foot Case Large #29-143 Black	2	0
0161-0185000000	Pull Advgt Bntwr 128mm MtNi	2	0
0261-1041000001	Lock Core NI SIAM	1	0
0261-1042000000	Lock Deadbolt NI w/Bezel SIAM for Door	1	0
0261-2087000000	Strike Lock Plate Zn Angle	1	0
0261-2336000000	Latch Stairs - Stair Member With Thru Drilling	1	0
0261-2337000000	Latch Stairs - Cab Member With Drilling	1	0
0263-0269361000	Fstnr Tabor Prl Corner Block	1	0
0263-0296000000	Catch Plate Door Black	1	0
0263-0691000000	Fstnr Push In Xmas Tree Clip	2	0
0263-1104000000	Bumper Press-In 8 x 2.5mm Head	2	0
0263-1267000000	Clip Shlf Clr Twin Pin 3-4-1"	4	0
0361-0333000000	Hinge Mtg Plate Blum 0mm	4	0
0361-0343000000	Hinge Blum IS 110 Soft Dowel	4	0
0461-0723000SET	Slid Pr BB RH-4532 500 Zn Flex SET	1	0
0861-0036000000	Screw Mach PhTr Zinc 8-32x1.00	4	0
0861-0042000000	Screw Tapp PhFl Zinc #8 X .68	10	0
0861-0063000000	Screw Tapp PhTr Zinc #8 X .62	36	0
0861-0203000000	Screw Conn HxDc Ni 7mmx 50mm	14	0
0861-0205000000	Screw Conn HxFl Zinc 7mmx 50mm	8	0
0861-0522000000	Screw Tapp PhTr Zinc #10x .75	2	0
0861-0532000000	Screw Tapp PhFl Zinc #7 X .875	4	0
0863-0779000000	Spacer Nylon p3125ODx p125inL	2	0
0964-0451000000	Label Blum Hinge Adjustment	2	0
0964-0455000000	Label Child Attn Warning	1	0
0964-2112000000	Label TM Stairs Safety Warning	1	0
0964-2688000000	Label Check For Damaged/Lost	1	0
0964-3009000000	Label This Side Up S-3513	1	0
0964-3053000000	Form Registration Card Totmate	1	0
0964-3057000000	Label Clear TM Logo	2	0
0964-3113000000	Instr Change Top Care	1	0
1063-0792043000	Top Change Tbl ABS 4' NoSnk	1	0
1063-0822043000	TM Tear Off ABS .197x 1x 21	1	0
1063-0880043000	Stairs Walk-Up 35in White	1	0
1064-0002000000	Paper Roll 18InX 125ft	1	0

Packaging					
Item Number:	Description:	Qty:	Width:	Height:	Depth:
0963-3077000000	Pkg Foam Corner 4x2x3 1.5# EPS	8	0	0	0
0964-2828000000	Pkg Cone No Stack	1	0	0	0
0964-3081000000	Pkg Honey Angle 1.5T x 6W x 7L	4	0	0	0

Rev	Comment	DateEntered	EnteredBy
		01/20/2023	scottm



Toddler Walkup Changing Table



Date:
1/20/2023 8:59:01AM

DRAWN BY:
scottm

Part Number:
TM8534A

Rev:

Drawing Number:
TM8534A

0964-3171473723

Pkg P28K Try/Slv 47x37x23

1

0

0

0

Unit Type: TM23