



Tankless Water Heater Isolation Valve Kits **SOFT-Turn**

Innovative single knob isolation valve with unique and ergonomic design provides perfect fit for the most tankless water heater with easy installation and easy maintenance.

FEATURES

- Smooth bi-directional single knob with enforced ceramic disc.
- Compact valve size suitable for the most tankless water heaters installation
- Swivel union coupling for easy knob positioning.
- Lead-Free forged brass body
- Integrated drain valve for quick system maintenance
- Color-Coded levers for easy and quick system identification
- Complaint with NSF/ ANSI 61/ 372
- Maintains maximum water flow



MATERIALS

Body	Lead-Free Brass
Cartridge	Disc
Cap gasket	Rubber

SPECIFICATIONS

Max. Working Temperature	160°F
Max. Working Pressure	125psi
Burst Pressure	500psi



DESIGN CERTIFICATIONS AND APPROVALS

- NSF 61 and 372 Compliant : Lead-Free

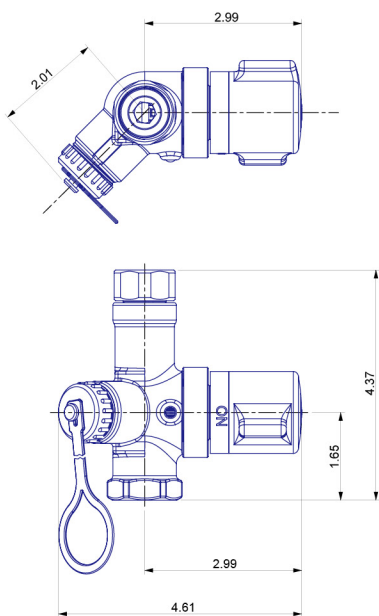
Job Name :	Engineer / Architect :
Job Location :	Wholesaler :
Submittal Date :	Contractor :



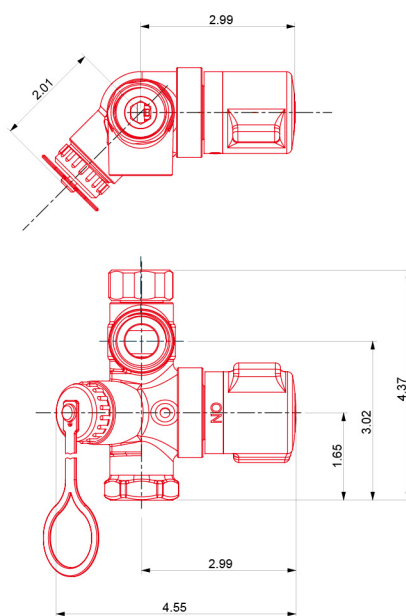
Tankless Water Heater Isolation Valve Kits **SOFT-urn**

Image	Part #	Description	Kit Weight	Qty / Box
	EF-ISV-2	Lead-Free Tankless Water Heater Service Valves, Hot & Cold Valve	3.00 lb	10
	EF-ISV-2PR	Lead-Free Tankless Water Heater Service Valves, Hot & Cold Valve W/ pressure relief valve	3.45 lb	10

DIMENSIONS (inches)



VALVE (COLD)



VALVE (HOT)

