



FOOD TABLE OPTIONS & ACCESSORIES

Shelves are 18 gauge

Serving and buffet shelf brackets are fabricated from 16 gauge stainless steel K.D. construction

Sneeze Guards are made of Thermoplastic Polymer for strength and durability

All hardware is included Simple assembly is required



Single Stainless Steel Overshelves

MODEL	Length	Weight	Cubic Feet
12" WIDE			
STOS-2	31-13/16"	18 lbs.	3
STOS-3	47-1/8"	21 lbs.	4
STOS-4	62-3/8"	24 lbs.	5
STOS-5	77-3/4"	27 lbs.	6
18" WIDE			
STOS-2-18	31-13/16"	20 lbs.	3
STOS-3-18	47-1/8"	23 lbs.	4
STOS-4-18	62-3/8"	26 lbs.	5
STOS-5-18	77-3/4"	30 lbs.	6



Double Stainless Steel Overshelves

MODEL	Length	Weight	Cubic Feet
12" WIDE			
TOS-2	31-13/16"	32 lbs.	3
TOS-3	47-1/8"	38 lbs.	4
TOS-4	62-3/8"	44 lbs.	5
TOS-5	77-3/4"	49 lbs.	6
18" WIDE			
TOS-2-18	31-13/16"	35 lbs.	3
TOS-3-18	47-1/8"	41 lbs.	4
TOS-4-18	62-3/8"	47 lbs.	5
TOS-5-18	77-3/4"	53 lbs.	6



10" Wide Buffet Shelf
With Built-In Food Shield

MODEL	Weight	Cubic Feet
TBS-2	28 lbs.	3
TBS-3	33 lbs.	4
TBS-4	38 lbs.	5
TBS-5	45 lbs.	6



Acrylic Side Panels for Buffet Shelf

Add side panels to meet additional NSF requirements (2 panels per side)

TBP-1 \$240 One Side
TBP-2 \$500 Two Sides

Field Installation Available



10" Wide Serving Shelf
With Built-In Food Shield

MODEL	Weight	Cubic Feet
TSS-2	17 lbs.	3
TSS-3	20 lbs.	4
TSS-4	23 lbs.	5
TSS-5	27 lbs.	6



Acrylic Side Panel for Serving Shelf

Add side panels to meet additional NSF requirements (1 panel per side)

TSP-1 One Side
TSP-2 Two Sides

Field Installation Available



Customer Service Available To Assist You **1-800-645-3166** 8:30 am - 8:00 pm E.S.T.

For Orders & Customer Service:

Email: customer@advancetabco.com or Fax: 631-242-6900

For Smart Fabrication™ Quotes:

Email: smartfab@advancetabco.com or Fax: 631-586-2933

FOOD TABLE OPTIONS & ACCESSORIES



10" Wide Stainless Steel Tray Shelves

STATIONARY | DROP-DOWN

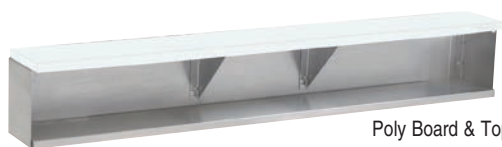
MODEL	MODEL	Length	Weight	Cubic Feet
TTS-2	TTS-2D	31-13/16"	10 lbs.	1
TTS-3	TTS-3D	47-1/8"	13 lbs.	1
TTS-4	TTS-4D	62-3/8"	16 lbs.	2
TTS-5	TTS-5D	77-3/4"	19 lbs.	2



10 " Wide Stainless Steel Tray Rails

STATIONARY | DROP-DOWN

MODEL	MODEL	Length	Weight	Cubic Feet
TTR-2	TTR-2D	31-13/16"	9 lbs.	1
TTR-3	TTR-3D	47-1/8"	12 lbs.	1
TTR-4	TTR-4D	62-3/8"	14 lbs.	2
TTR-5	TTR-5D	77-3/4"	16 lbs.	2



8" Wide Stainless Steel Dish Shelf

Connects to TCB Series Shelf. Includes 2 Side Panels and Lower Shelf.

MODEL	Length	Weight	Cubic Feet
TDS-2	31-13/16"	15 lbs.	2
TDS-3	47-1/8"	17 lbs.	3
TDS-4	62-3/8"	19 lbs.	4
TDS-5	77-3/4"	21 lbs.	5



8" Wide Stainless Steel Shelf with Removable 3/8" Poly Cutting Board

MODEL	Length	Weight	Cubic Feet
TCB-2	31-13/16"	20 lbs.	1
TCB-3	47-1/8"	31 lbs.	1
TCB-4	62-3/8"	36 lbs.	1
TCB-5	77-3/4"	41 lbs.	2



3/8" Poly Cutting Boards

MODEL	Length	Weight	Cubic Feet
SU-P-342	31-13/16"	12 lbs.	1
SU-P-343	47-1/8"	15 lbs.	1
SU-P-344	62-3/8"	18 lbs.	1
SU-P-345	77-3/4"	21 lbs.	1



Spillage Pans

MODEL	Steel Type	Length	Width	Weight	Cubic Feet
SP-A	Aluminum	12"	20"	15 lbs.	3
SP-S	Stainless Steel	12"	20"	17 lbs.	4

More Options

- T Thermostatic Control
- M Manifold Drain Assembly
- SU-25** Portable Kit (Includes 4 -5" Swivel Casters, 2 w/ Brakes & Universal Mount Push Handle)
- SU-26** Heavy Duty Portable Kit (Includes 4 -5" Heavy Duty Swivel Casters, 2 w/ Brakes & Universal Mount Push Handle)

SU-32 Upgrade to a Stainless Steel Lining
(Excludes Sealed Hot Well Units)

SU-45A 12" x 1" Adapter Bar

SU-45B 20" x 3" Adapter Bar

SU-72 Upgrade to 240 Volt Units to 3 Phase Wiring



ADVANCE TABCO is constantly engaged in a program of improving our products. Therefore, we reserve the right to change specifications without prior notice.

© ADVANCE TABCO, MARCH 2015