

- **B37R** 35-5/8"L x 34-1/4"D x 82-1/4"H
- **B47R** 47-5/8"L x 34-1/4"D x 82-1/4"H
- **B57R** 59-5/8"L x 34-1/4"D x 82-1/4"H
- **B67R** 71-5/8"L x 34-1/4"D x 82-1/4"H

Included

- Casters (non-locking) w/ levelers
- Condensate pan
- E-Coated evaporator coil
- Hydrocarbon refrigerant (R290)
- Magnetic air filter
- One piece formed ABS plastic tub
- One year parts & labor; 5 year compressor warranty
- Rear wall spacer (removable to fit through door opening)
- Top light (LED 4000K)
- Warmest average product temperature of 40°F or less



B37R

Specify	Standard Features	Additional Options
EXTERIOR COLOR	• Powder coated Silversan Black	• Laminate (stock/non-stock colors) • Powder coated (stock/non-stock colors) • Stainless steel
INTERIOR COLOR	• Powder coated Silversan Black	• Stainless steel
LOWER FRONT PANEL COLOR	• Powder coated Silversan Black	• Stainless steel (must choose stainless exterior)
REAR EXTERIOR COLOR	• Powder coated Silversan Black	• Stainless steel
BASE SUPPORT	• Casters (non-locking) w/ levelers	
END PANELS	• Full w/stainless steel mirror interior	• Cutaway w/ glass • None (synchronized defrost required)
COVER/CURTAIN	• None	¹ • Night curtain, retractable, non-locking • Removable solid security cover, locking • Roll-down security cover, locking
PRICE TAG MOLDING	• None	• Universal price tag molding (clear w/ open top)
REAR DOORS	• None (solid back panel)	• Rear loading hinged doors, locking
SHELVING	• Metal shelves (4), non-lighted	• Metal shelves (4), lighted (LED 4000K)
ELECTRICAL CONNECTION	• 6' Straight blade power cord	• 6' Locking power cord ² • 6' Straight blade 120V power cord, required with B37R 120V
CLEAN SWEEP	• None	• Clean Sweep® automatic condenser coil cleaner
REFRIGERATION	• Breeze~E (Type-II) self-contained refrigeration	³ • Breeze (Type-I) self-contained refrigeration, required with B37R 120V
THERMOMETER	• Spirit filled thermometer	
MISCELLANEOUS		• Second year parts & labor warranty (excludes compressor)

Option Notes: 1 - One cover/curtain type per model

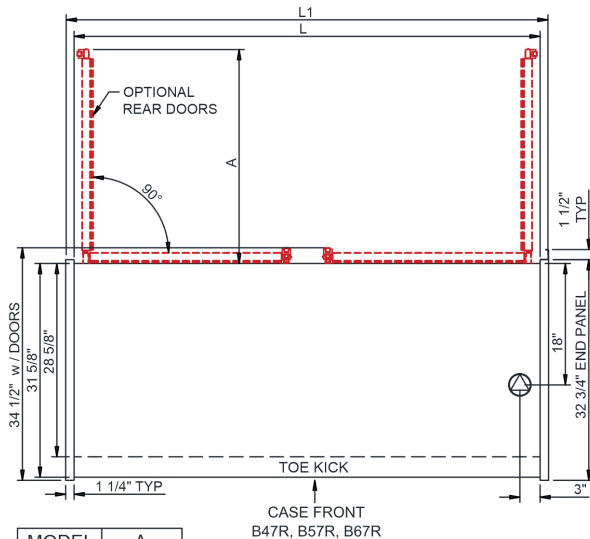
2 - B37R only

3 - B37R only

Intended Environment: Type II - Designed to operate in ambient conditions of 80°F and 55% relative humidity unless noted otherwise in system information below.

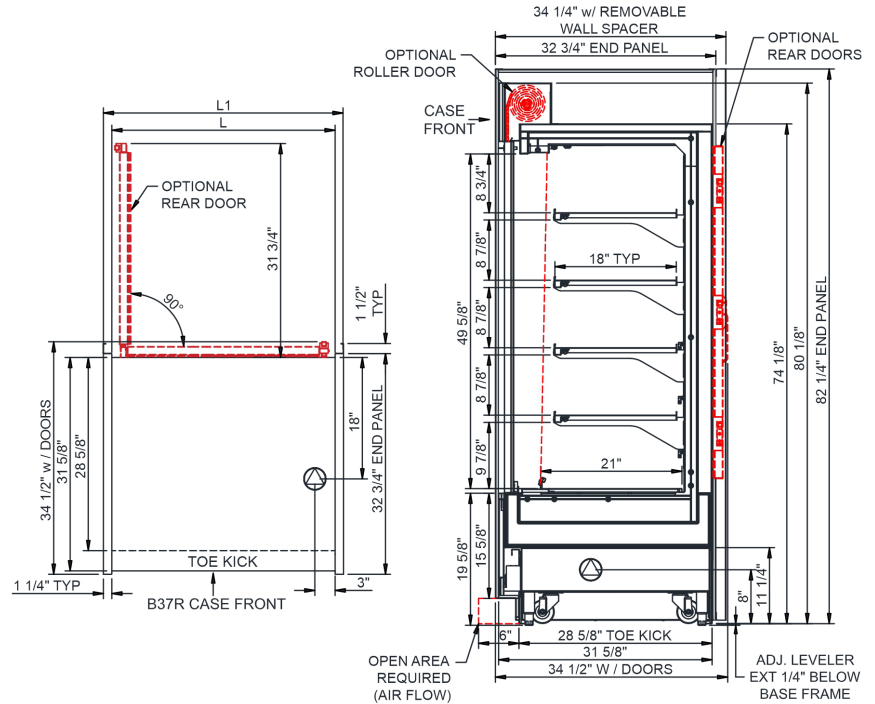
Zone	Intended Product To Be Displayed	Warmest Avg Prod Temp ° F
1	Packaged refrigerated products	40

PLAN VIEW



MODEL	A
B47R	21 3/4"
B57R	27 3/4"
B67R	31 3/4"

SIDE VIEW



NOTE: ALL DIMENSIONS APPROXIMATE

ELECTRICAL JUNCTION BOX (SUPPLIED WITH 6" LEADS OR POWER CORD).
 LOCATION OF DRAIN TUBE FOR REMOTE REF. ONLY (SUPPLIED WITH 3/4" OR 1 1/2" PVC TUBE).

REFRIGERATION LINE CONNECTION.
 REMOTE FLOOR SINK & UTILITIES ACCESS AREA.

SELF-CONTAINED CASE SERVICE ACCESS AREA.
 DRY CASE SERVICE ACCESS AREA.

Model Technical Specifications

Model Technical Specifications																
Model	L"	L1"	L2"	System Circuit Volts			Phs	Freq	Amps ***	Watts	Wires	NEMA Plug	SST	Conv. Rack BTU/H	Para. Rack BTU/H	Est Wt
B37R	33.13	35.63	.00	Self-Contained (R290)	Circuit #1	208-240	1	60	10.77	1,199	2+G	6-15P or L6-15P	N/A	N/A	N/A	850
				Self-Contained (R290)	Circuit #1	110-120	1	60	15.14	485	2+G	5-20P or L5-20P	N/A	N/A	N/A	
B47R	45.13	47.63	.00	Self-Contained (R290)	Circuit #1	208-240	1	60	16.00	1,640	2+G	6-20P or L6-20P	N/A	N/A	N/A	900
B57R	57.13	59.63	.00	Self-Contained (R290)	Circuit #1	208-240	1	60	16.00	1,665	2+G	6-20P or L6-20P	N/A	N/A	N/A	1,100
B67R	69.13	71.63	.00	Self-Contained (R290)	Circuit #1	208-240	1	60	16.00	1,689	2+G	6-20P or L6-20P	N/A	N/A	N/A	1,300

*** Does not include electric defrost on freezer models.

Regulatory Approvals:

All Models
 Accordance with AHRI Std 1200
 ETL Listed to UL 471 & UL 60335-2-89
 ETL Listed to CAN/CSA 22.2 No. 120
 ETL Sanitation to NSF/ANSI 7



In Accordance with
AHRI Std 1200

DOE 2017
 Energy Efficiency
 Compliant

Important Notes:

- 1) Performance issues (product temperatures, water on floor, etc.) caused by adverse conditions are not covered by warranty.
- 2) Levelers must be adjusted during installation to ensure unit is level and plumb.
- 3) Keep unit at least 15' from exterior doors, overhead HVAC vents, or any air curtain disruption.
- 4) Do not expose unit to direct sunlight or any heat source (ovens, fryers, etc.).
- 5) End panels must be tightly joined or kept at least 6" away from any structure to prevent condensation.
- 6) Tile floors, low ceilings, or small rooms will increase noise level.
- 7) Compressor air intake at lower front, discharge from lower rear. Lower panels cannot be blocked. Wall spacers required for proper air flow.
- 8) If GFCI is required, a GFCI breaker MUST be used in lieu of a GFCI receptacle.

⚠ WARNING: This product can expose you to chemicals, including Urethane (Ethyl Carbamate), which are known to the State of California to cause cancer and birth defects or other reproductive harm. For more information go to www.P65Warnings.ca.gov.