

Product Specifications

Combination Convertible Service Above Refrigerated Self-Service Case



MODEL SHOWN: HMBC4-E3
W/ CUTAWAY END PANEL

NOTE: NON-DIVIDED UPPER DISPLAY AREA - HMBC2-E3 & HMBC3-E3
DIVIDED UPPER DISPLAY AREA - HMBC4-E3, HMBC5-E3 & HMBC6-E3

- ☐ HMBC2-E3
- ☐ HMBC3-E3
- ☐ HMBC4-E3
- ☐ HMBC5-E3
- ☐ HMBC6-E3

Lengths include end panels
27"L x 34-1/8"D x 56-1/4"H
39"L x 34-1/8"D x 56-1/4"H
51"L x 34-1/8"D x 56-1/4"H
63"L x 34-1/8"D x 56-1/4"H
75-3/8"L x 34-1/8"D x 56-1/4"H

STANDARD FEATURES

- Breeze™ w/EnergyWise s/c refrigeration
- Clear glass shelf, lighted (LED 3500K) in upper display
- Compressor air rear intake, front discharge. Toe kick cannot be blocked
- Condensate pan (self-contained refig. only)
- Convertible baffle in upper display
- Curved double pane, lift-up front glass w/o lock
- Cutaway end panels
- Flat front panel
- Integrated average product temperature of 40°F or less
- LED 3500K top & shelf lights
- One year parts & labor; 5 year compressor warranty
- Rear sliding doors (26" model swinging)

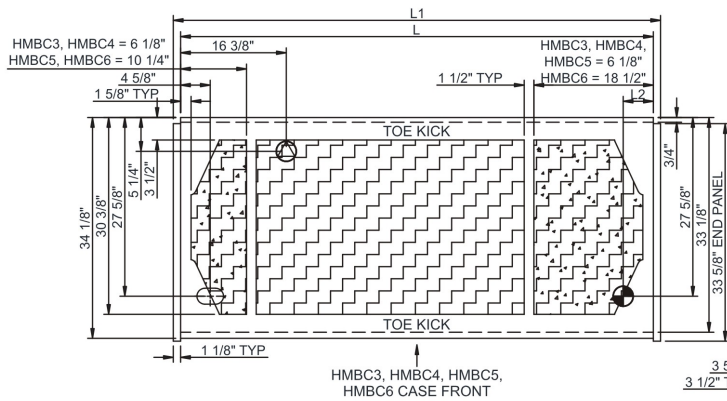
Features	Standard	Options
EXTERIOR COLOR	<input type="checkbox"/> Black	
INTERIOR COLOR	<input type="checkbox"/> Black	
REAR EXTERIOR COLOR	<input type="checkbox"/> Painted - White	
TRIM COLOR	<input type="checkbox"/> Black	
BASE	<input type="checkbox"/> Levelers	
LOWER REAR	<input type="checkbox"/> Solid back panel	
UPPER REAR	<input type="checkbox"/> Clear glass rear sliding doors w/o lock (26" model swinging) (specify LH or RH hinge)	
ELECTRICAL CONNECT	<input type="checkbox"/> 6' straight blade power cord (self-cont.)	
REFRIGERATION	<input type="checkbox"/> Breeze™ w/EnergyWise s/c refrigeration	
MISCELLANEOUS		<input type="checkbox"/> Second year parts & labor warranty (excludes compressor)

Product Specifications

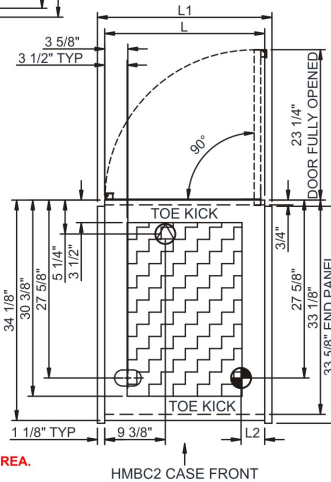
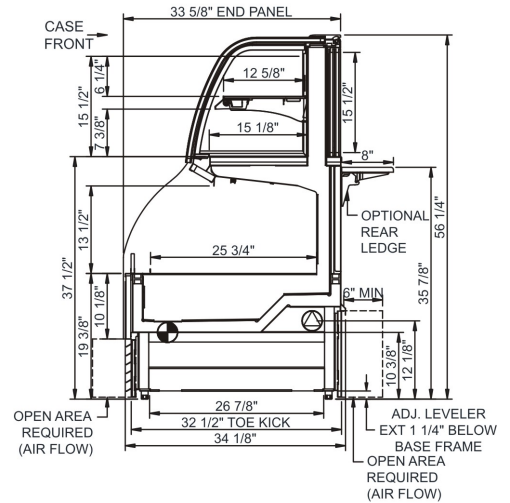
Intended Environment: Type I - Designed to operate in ambient conditions of 75°F with 55% relative humidity unless noted otherwise in system information below.

Zone	Intended Product To Be Displayed	Warmest Avg Prod Temp ° F
1	Packaged refrigerated products	40

PLAN VIEW



SIDE VIEW



NOTE: ALL DIMENSIONS APPROXIMATE

- | | | | | | |
|-----------------------------------------------------------------------------------|-----------------------------------------------------------------------------------------|-------------------------------------------------------------------------------------|-----------------------------------------------|-------------------------------------------------------------------------------------|------------------------------------------|
|  | ELECTRICAL JUNCTION BOX
(SUPPLIED WITH 6" LEADS OR POWER CORD). |  | REMOTE FLOOR SINK & UTILITIES
ACCESS AREA. |  | SELF-CONTAINED CASE SERVICE ACCESS AREA. |
|  | LOCATION OF DRAIN TUBE FOR REMOTE REF.
ONLY (SUPPLIED WITH 3/4" OR 1 1/2" PVC TUBE). |  | DRY CASE SERVICE ACCESS AREA. | | |
|  | REFRIGERATION LINE CONNECTION. | | | | |

Model Technical Specifications

Model	L"	L1"	L2"	System Circuit Volts			Phs	Freq	Amps ***	Watts	Wires	NEMA Plug	SST	Conv. Rack BTUH	Para. Rack BTUH	Est Wt
HMBC2-E3	N/A	27.00	3.63	Self-Contained	Circuit #1	110-120	1	60	14.35	1,106	2+G	5-20P or L5-20P	N/A	N/A	N/A	650
HMBC3-E3	N/A	39.00	4.63	Self-Contained	Circuit #1	110-120	1	60	15.72	1,426	2+G	5-20P or L5-20P	N/A	N/A	N/A	900
HMBC4-E3	N/A	51.00	4.63	Self-Contained	Circuit #1	120/230V	1	60	9.68	1,539	3+G	14-20P or L14-20P	N/A	N/A	N/A	950
HMBC5-E3	N/A	63.00	4.63	Self-Contained	Circuit #1	120/230V	1	60	11.33	1,908	3+G	14-20P or L14-20P	N/A	N/A	N/A	1,100
HMBC6-E3	N/A	75.38	4.63	Self-Contained	Circuit #1	120/230V	1	60	12.00	1,831	3+G	14-20P or L14-20P	N/A	N/A	N/A	1,200

*** Does not include electric defrost on freezer models.

Regulatory Approvals:

All Models	<p>Accordance with AHRI Std 1200</p> <p>ETL Listed to UL 471</p> <p>ETL Listed to CAN/CSA 22.2 No. 120</p> <p>ETL Sanitation to NSF 7</p>
------------	-------------------------------------------------------------------------------------------------------------------------------------------



In Accordance with
AHRI Std 1200

DOE 2017
Energy Efficiency
Compliant

Important Notes:

- 1) ELECTRICAL NOTE: If GFCI is required, a GFCI breaker MUST be used in lieu of a GFCI receptacle
2) 35" Minimum door entry clearance required (without shipping skid).

⚠ WARNING: This product can expose you to chemicals, including Urethane (Ethyl Carbamate), which are known to the State of California to cause cancer and birth defects or other reproductive harm. For more information go to www.P65Warnings.ca.gov.