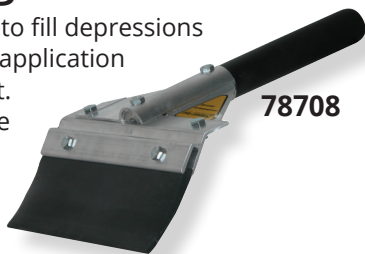


## Hand-Held Squeegee

The hand-held squeegee is used to fill depressions and cracks in a floor prior to the application of any protective coating product. The blade is clamped in a durable 8" wide aluminum frame, not bolted through, making it easy to replace. The handle is a 6" non-slip vinyl grip over an aluminum core.



Item No.	Description
78708	Hand-Held Squeegee, 3" Flexible Rounded Edge Neoprene Blade
SP50070	Replacement Blade for 78708
78709	Hand-Held Squeegee, 2" More Rigid Square Edge Neoprene Blade
SP50129	Replacement Blade for 78709
78108	8" Hand-Held Squeegee Frame

## Crack Filler Squeegees

### Push/Pull V-Crack Filler Squeegee

The "V" is at a 70 degree angle, using a 1/4" x 2" neoprene rubber blade. The 2" height adds greater containment and control of material.



### Lightweight U-Crack Filler Squeegee

This squeegee is easy to use and is great for filling cracks prior to applying floor coatings or seal coating material. The replaceable blade has an inside width of 2-1/2". The blade height is 1-1/4".



For Crack Filler Squeegee Handle Options See Page 32

Item No.	Description
46002	Lightweight U-Crack Filler Squeegee
SP50121	Replacement Blade (for 46002)
46001	Heavy-Duty U-Crack Filler Squeegee
SP50120	Replacement Blade (for 46001)
46005	Push / Pull V-Crack Filler Squeegee
SP50122	Replacement Blade (for 46005)

### Heavy-Duty U-Crack Filler Squeegee

Steel frame with a 5/16" x 2-1/4" neoprene rubber blade. The 9-1/2" deep by 3" U-shaped cavity holds plenty of material. Replacement blades are available.



## Foam Squeegees

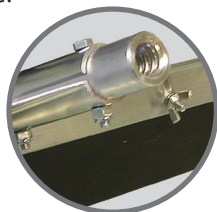
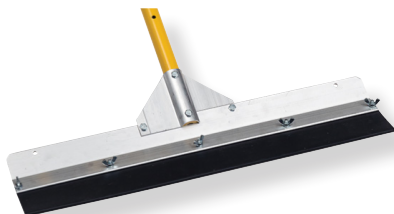


Double edge foam squeegee with tapered handle adapter. Galvanized steel frame with reinforced handle socket.

Item No.	Description
47220	Squeegee - Foam Blade, 18"
47222	Squeegee - Foam Blade, 22"
47224	Squeegee - Foam Blade, 30"

## Topping and Underlayment "Super Squeegee"

A 24" low-angle / clamp style aluminum frame with a durable aluminum gusset bracing system is combined with a rounded edge, 3" exposed neoprene rubber blade.



Description	Blade Size 24 in.	Blade Size 36 in.
Squeegee with Threaded Handle Adapter	78601	78603
Squeegee with 66" Powder-Coated Aluminum Handle	78602	78604
Replacement Blade	SP50071	SP50072

## Window Squeegees



78710



78711



78712

Our window squeegees contain a flat non-marking Nitrile blade, superior & less expensive than red rubber. Can be used as a hand-tool or with a tapered wood handle.

Item No.	Description
78710	10" Window Squeegee
78711	12" White Window Squeegee
78712	12" White Heavy-Duty Window Squeegee
SP50130	Replacement Blade for 78710