

APPLIANCE TRUCK



APPLIANCE TRUCK



MODEL SHOWN

HDARB5CM1EC11RLS



MODEL SHOWN

HDARB1CM2E-12WL

- Easily move heavy or bulky items up and down stairs
- Lightweight aluminum makes load handling easier
- Heavy-duty self-retracting ratchet strap secures loads; eliminates shifting
- Stair climbers glide smoothly up and down steps and over curbs
- Wings provide added support for wider loads
- 10" interlocking microcellular foam wheels are non-marking and maintenance free

SPECIFICATIONS

Capacity in 2-wheel	600 lbs.
Capacity in 4-wheel	800 lbs.
Overall height	66-5/8"
Overall width	22-7/8"
Overall depth	15-7/8"
Nose dimensions	23" long x 5" deep
Weight	70 lbs.
Strap capacity	400 lbs. working load; 1,200 lbs. max load

Features



4TH WHEEL ATTACHMENT

- Reduces user strain by supporting load in incline position
- Durable latch locks attachment in place when not in use
- Heavy duty roller assembly provides smooth transition between positions



HANDLE RELEASE

- Innovative feature allows the operator to release and retract the back wheels while keeping both hands securely on the truck
- Cable release quickly deploys load support attachment



BREAK BACK BAR

- Break back bar prevents truck from rolling forward when breaking back or uprighting loads
- Automatically returns to retracted position when not in use
- Promotes upright posture and keeps user out from underneath load

VERTICAL LOOP HANDLE



P/N	M/N	WT.(LBS.)
304200	B1	2.5

ERGO LOOP HANDLE



P/N	M/N	WT.(LBS.)
304205	B2	1.75

SHEPHERD HANDLE



P/N	M/N	WT.(LBS.)
304210	B3	3.0

PISTOL GRIP HANDLE



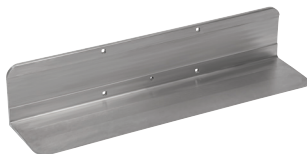
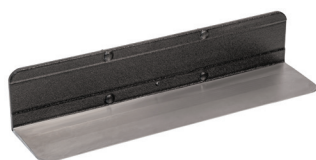
P/N	M/N	WT.(LBS.)
304245	B4	1.75

SHEPHERD HANDLE WITH RELEASE



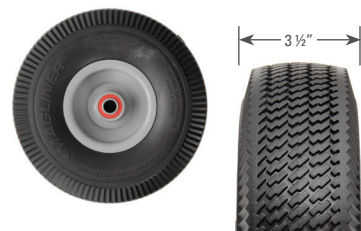
P/N	M/N		WT.(LBS.)
308297	B5	Right Hand	1.50
308298	B5	Left Hand	1.50
308078	B5	Release Lever	2.25

EXTRUDED ALUMINUM NOSES



FLUSH MOUNT					
P/N	M/N		W"	D"	WT.(LBS.)
308228	M1	Extruded aluminum with coating	23	5	6.25
308216	M2	Extruded aluminum, no coating	23	5	5.75

MICROCELLULAR WHEELS



P/N	M/N	D"	WT.(LBS.)
131010	1010	10	4.0

Puncture resistant non-marking tire on one-piece steel hub with semi-precision bearings.



P/N	M/N	D"	WT.(LBS.)
111075	1075	10	3.0

Puncture resistant, non-marking tire on one-piece high-density, interlocking polyethylene hub with semi-precision bearings.



P/N	M/N	D"	WT.(LBS.)
111080	1080	10	4

Puncture resistant, non-marking tire on one-piece high-density, interlocking polyethylene hub with semi-precision bearings.

PNEUMATIC WHEELS



P/N	M/N	D"	WT.(LBS.)
101020	1020	10	7.0

Foam filled with three-piece offset hub and semi-precision bearings.

APPLIANCE TRUCK

Options

4TH WHEEL ATTACHMENT



Reduces strain by supporting the load in incline position. Must specify frame release options when ordering. Option is factory installed only.

RELEASE OPTIONS



Frame-mounted cable release quickly deploys back wheels.



Handle-mounted cable release deploys and retracts back wheels without removing hands from handle. Available for B5 handle option only.

Accessories



P/N	WT.(LBS.)
308261	5.5

Heavy-duty cast stair crawlers with smooth-rolling glide belt.



P/N	WT.(LBS.)
86006	2.5

Heavy-duty cast stair climbers with replaceable low-friction polymer glide bars. Not compatible with 4th wheel attachment.



P/N	L"	W"	WT.(LBS.)
308259	28.5	5.5	2.5

Automatically retracting break back bar prevents truck from rolling forward when breaking back or uprighting loads.



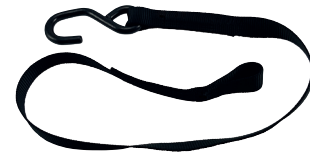
P/N	L'	W"	WT.(LBS.)
308081	9	1	1.5

Retractable strap has 1,200 lbs. maximum load and 400 lbs. working load capacity.



P/N	DESCRIPTION	H"	W"	WT.(LBS.)
308266	Wings with bumper	8	3	2
308267	Standard wings	8	3	3

Extruded aluminum wings add an additional 6" of load support. Two wings per side rail.



P/N	L'	W"	WT.(LBS.)
308268	4	1	1.0

Strap extension increases length of retractable strap by 4' and has 1,200 lbs. maximum load and 400 lbs. working load capacity.

MAGLINER®
magliner.com

Magline, Inc.
1205 West Cedar Street | Standish, MI 48658
1.800.MAGLINE (624.5463)
(989) 512.1000 (Outside U.S. & Canada)
Fax: (989) 803.5941