

# 27" STEEL CORE® PUSHER | SP2725

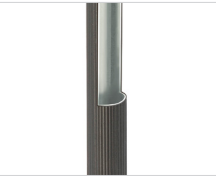
Clear the snow out faster and with fewer passes by using the Suncast® 27 inch Steel Core® Pusher. The curved blade and long shaft help move snow without lifting. This snow pusher is most effective on smooth, paved areas and is safe for softer surfaces such as wood decks. Featuring a Comfort D-grip handle and a Steel Core® shaft, this pusher is built for ease and control with a strong and durable construction. The large surface blade has an angle rib pattern that resists snow-stick and makes for easy work of snow collected on sidewalks and driveways.

## FEATURES

- Features a curved blade with a long shaft for removing snow without lifting
  - Most effective with dry snow of 3 to 4 inches deep, working best on smooth, paved surfaces
  - Ribbed Steel Core® handle is encased with a resin covering combining the strength and longevity of steel
  - Comfort D-grip handle for added grip and control
  - Large surface area with an angled rib pattern to resist snow-stick
  - Made in the USA
- \* Packaging is in English and French



RIBBED STEEL CORE®  
SHAFT



## SPECIFICATIONS



UPC  
0-44365-00741-0

BLADE  
27 in. W x 13 in. H

LENGTH  
56 in.

STD PACK SIZE  
6

MASTER WEIGHT  
37.9 lbs.

CARTON DIMENSIONS  
58.5 in. L x 28 in. W x 22.8 in. H

UNIT LOAD QTY.  
24

TRUCK LOADQTY.  
768



NAVY  
BLUE



Smart. Inside & Out®

701 N. KIRK ROAD | BATAVIA, IL 60510 | USA | 630.879.2050 | WWW.SUNCAST.COM | ©2020 SUNCAST CORPORATION | ALL RIGHTS RESERVED

LU6.28.21