

CODE NUMBER

3873103T

DESCRIPTION

Carbon Offset, Vitreous China Wall-Mounted Backsplash Lavatory.

DETAILS

- Centerset: Single
- Nominal Dimensions: 18 ¼" x 20 ¾" x 12 ¼" (464 x 527 x 311mm)

FEATURES

- White, vitreous china wall hung lavatory with backsplash
- Great complement to all of Sloan's sensor faucet series
- Front overflow provides clean appearance
- All mounting hardware included
- IAPMO certified to meet or exceed ASME A112.19.2 standards
- Meets ADA guidelines and ANSI A117.1 requirements when installed accordingly

DOWNLOADS

- [Sloan SS-3003 Installation Instructions](#)
- [SS/ST/SU/WETS/WEUS Fixtures Repair and Maintenance Guide](#)
- [Additional Downloads](#)



COMPLIANCES & CERTIFICATIONS



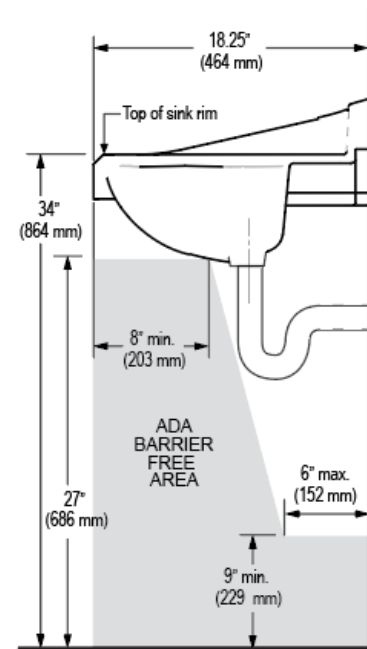
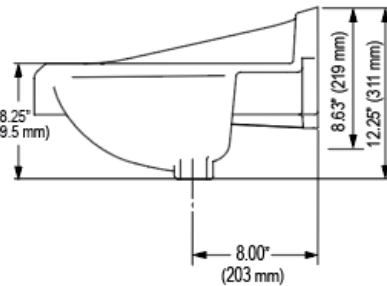
(BREEAM Materials Credit, Carbon Neutral, EPD, HPD, LEED Materials & Resources EPD Credit, LEED Materials & Resources HPD Credit, Satisfies LEED Credits)

NOTES

All information contained within this document subject to change without notice.

All vitreous china dimensions shown in these drawings are nominal and not to scale. Dimensions can vary within the tolerances established in the governing ASME A112.19.2/CSA B45.1 standard. It is important to consider this when planning rough-in and plumbing layouts.

The technical drawings illustrate the dimensions for the ADA Compliant Toilet Stall. The top elevation shows a square footprint with overall dimensions of 20.75' (527 mm) by 20.75' (527 mm). The inner clearances are 16.75' (426 mm) wide and 86 mm (3.38") deep. The stall features a central toilet fixture with a 4.6" clearance above it. The side elevation shows a total height of 31" (787 mm) from the finished floor to the top of the stall enclosure. Key components include two 3/8" (10 mm) diameter anchor screw holes, a 1 1/4" (32 mm) O.D. drain outlet, and a water supply connection. The stall is designed to meet ADA requirements, with a total depth of 34" (864 mm).



Page 2 of 2