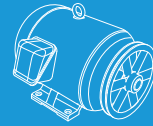


SIG SERIES

Side Intake Filtered Fresh Air Supply Units



AVAILABLE WITH MOTORS & DRIVES FACTORY INSTALLED. CONSULT OUR DELAIR FAN SELECTION SOFTWARE FOR DETAILS.

SIG series fresh air supply units are ideal for commercial applications such as schools, apartments and office buildings. They also provide an economical and practical solution to meet NFPA 96 separation requirements between supply & exhaust air streams in commercial kitchen applications.



FEATURES

- Flexible forward curved belt drive blowers operate at low speed and low noise levels.
- Galvanized steel housing.
- Heavy duty ball bearings suitable for -65° to +250° F.
- Weather proof cabinet designed for outdoor roof mounting.
- Filters designed with large surface area for efficient filtration.
- Washable aluminum mesh filter are located in the intake hood and are accessible through the hood end cap for ease of service.
- Easy on-site addition of customer supplied air supply duct extension between the intake hood and unit provides additional separation where necessary.

PERFORMANCE SPECIFICATIONS

MODEL	1/2" SP				1" SP				1 1/2" SP				2" SP				2 1/2" SP				Min HP	Max HP
	CFM	BHP	FEI	FEPact (kW)	CFM	BHP	FEI	FEPact (kW)	CFM	BHP	FEI	FEPact (kW)	CFM	BHP	FEI	FEPact (kW)	CFM	BHP	FEI	FEPact (kW)		
SIG-9	2300	1.47	0.60	1.39	2000	1.49	0.66	1.41	1600	1.43	0.68	1.36	1000	1.43	0.56	1.36	600	1.50	0.44	1.42	1/4	1 1/2
SIG-10	2600	1.37	0.67	1.30	2400	1.47	0.77	1.39	2100	1.44	0.85	1.37	1800	1.46	0.88	1.38	1300	1.42	0.80	1.35	1/4	1 1/2
SIG-12	3800	1.98	0.67	1.87	3400	1.89	0.82	1.75	3100	1.94	0.91	1.80	2700	1.92	0.96	1.78	2200	1.99	0.90	1.84	1/4	2
SIG-15	5200	2.87	0.61	2.59	4700	2.87	0.73	2.59	4300	2.95	0.81	2.65	3600	2.93	0.82	2.64	3000	2.94	0.81	2.65	1/2	3

Power rating (BHP) does not include transmission losses.

Performance certified is for installation type B: Free inlet, Ducted outlet. Performance ratings do not include the effect of appurtenances (accessories).

FOR FAN CURVES & FULL PERFORMANCE DATA, CONSULT OUR DELAIR SOFTWARE. WWW.CANARM.COM/DELAIR



Canarm certifies that the SIG Series shown herein are licensed to bear the AMCA Seal. The ratings shown are based on tests and procedures performed in accordance with AMCA Publications 211 & 311 and comply with the requirements of the AMCA Certified Ratings Programme. The AMCA certified ratings seal applies to air and sound performance only. The SIG Series shown herein are not approved by AMCA for FEI ratings.

ACCESSORIES

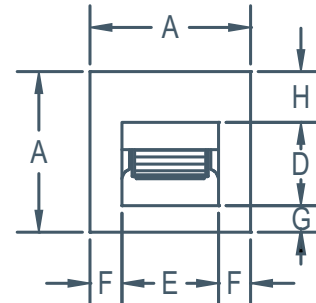
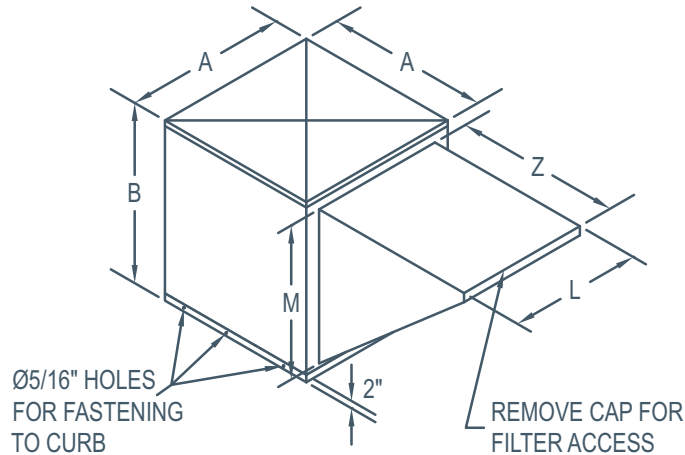
- Roof curbs
- Disconnects
- Frequency Drives

EASY TO SERVICE.
LATCHED TOP COVER
PROVIDES CONVENIENT
ACCESS TO MOTOR,
PULLEYS AND BELT.



SIG SERIES

Side Intake Filtered Fresh Air Supply Units



BOTTOM VIEW

DIMENSIONS

MODEL	A	B	D	E	F	G	H	L	M	Z	FILTERS		*INSIDE CABINET	UNIT WEIGHT (LBS) (without motors & drives)
											SIZE	QUANTITY		
SIG-9	22"	24"	10 1/4"	11 7/8"	5"	3 7/8"	7 7/8"	19 3/8"	18 1/8"	19 7/8"	16" x 25" x 1"	1	21 7/8" x 21 7/8"	78 lbs
SIG-10	22"	24"	11 7/8"	13 1/4"	4 7/16"	3 1/4"	6 7/8"	19 3/8"	18 1/8"	19 7/8"	16" x 25" x 1"	1	21 7/8" x 21 7/8"	92 lbs
SIG-12	32"	32"	13 3/4"	15 7/8"	8 1/16"	9 1/4"	9"	25"	24 5/8"	25"	16" x 25" x 1"	2	31 7/8" x 31 7/8"	130 lbs
SIG-15	32"	32"	16 1/8"	18 7/8"	6 9/16"	6 7/8"	9"	25"	24 5/8"	25"	16" x 25" x 1"	2	31 7/8" x 31 7/8"	140 lbs

* Curb size to be smaller than inside cabinet to allow for flashing and roofing.

TYPICAL INSTALLATION

