

Steam-Rated Commercial Grade Condensate Pumps

Model SC-1AX Series Pump

BENEFITS

- 💧 **Rated for 2,000 EDR; 480,000 BTU**
- 💧 **Vapor sealed, 4 gallon cast aluminum reservoir**
- 💧 **Steam rated for 2,000 EDR, 480,000 BTU**
- 💧 **Max temperature to 212°**
- 💧 **Stainless steel float**

Hartell's steam-rated condensate pump is designed expressly for the automatic return of condensate to a collection point where radiation has been added to existing systems below the return.

FEATURES

- 💧 **Auxiliary safety switch**
- 💧 **1/2 hp, 3,400 rpm motor**
- 💧 **Inlet: 1-1/2" FNPT, Outlet: 3/4" FNPT**
- 💧 **Integral junction box**
- 💧 **Usable lifts over 40 ft**
- 💧 **Dual voltage motor**
- 💧 **Heavy duty design for industrial applications**



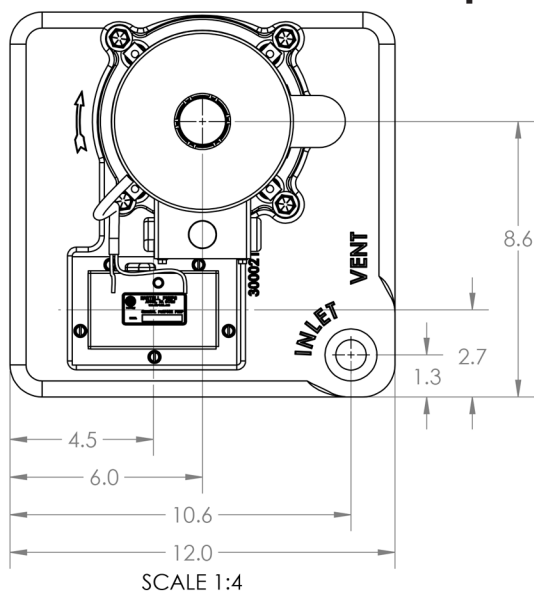
| Model | Part No. | Aux. Switch | hp@rpm | Voltage | Full Load Amps | Performance | | | | | | Shut off | Dimensions | | | |
|--------|----------|-------------|----------|---------|----------------|-------------|-------|-------|-------|-------|-------|----------|------------|--------|--------|--------|
| | | | | | | Lift/Feet | 6' | 12' | 18' | 24' | 36' | 45' | Width | Length | Height | Weight |
| SC-1AX | 851123 | Y | 1/2@3450 | 115/230 | 7.46/3.7 | Gallons/hr | 4200 | 3780 | 3420 | 2820 | 1800 | - | 12" | 12" | 19" | 45lbs |
| | | | | | | Lift/Meter | 1.8m | 3.6m | 5.5m | 7.3m | 10.9m | 13.7m | 30.4cm | 30.4cm | 48.2cm | 20.4kg |
| | | | | | | Liters/hr | 15898 | 14308 | 12946 | 10674 | 6813 | - | | | | |

Steam-Rated Commercial Grade Condensate Pumps

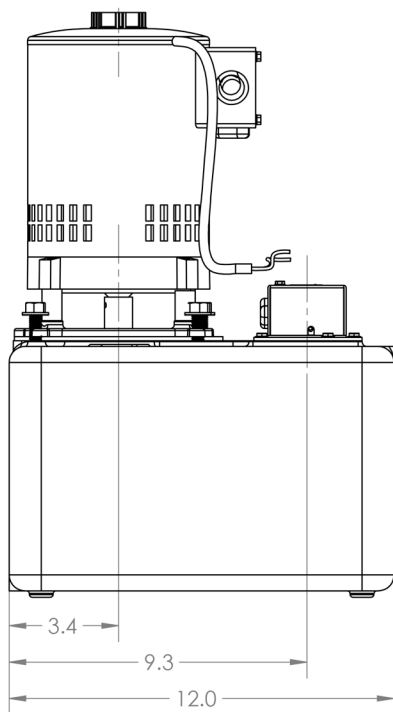
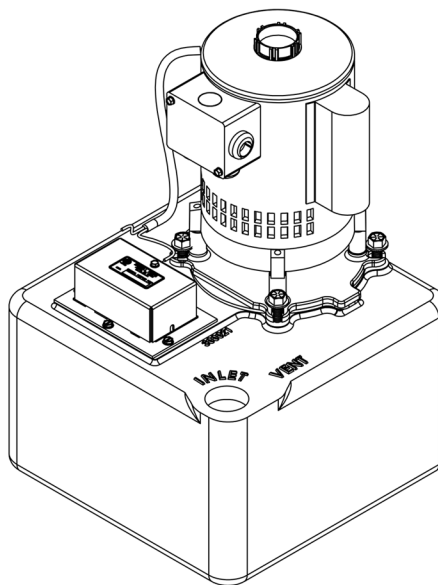
DATA SHEET



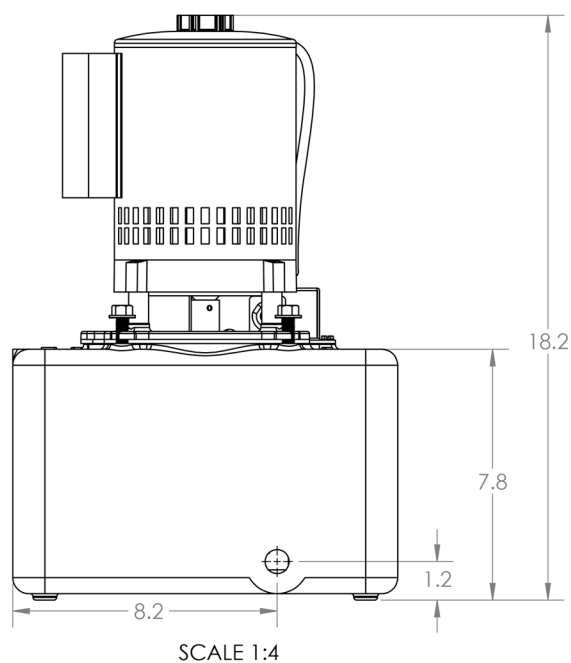
Model SC-1AX Series Pump



TOP VIEW



SIDE VIEW



DISCHARGE END VIEW