

## Floor Mount Stainless Steel Sink

Model	Flow-Rate
727F	Standard 2.0 GPM
727F-0.5	Low-Flow 0.5 GPM

### Product Specifications

Built to last using 16-gauge, type 304 stainless steel.  
Exposed surfaces have a satin finish.

Outside Dimensions	20" x 17-1/2" x 43-1/2" High
Inside Bowl Size	17" x 14" x 7" Deep
Back Splash Height	9-1/2"
Side Splash Height	9-1/2"
Water Activation	Manual Faucet with 4" Handles
Faucet Mounting Center	8"
Flow Rate	2 GPM
Inlet Connections	1/2" Male Compression
Drain Opening	2"
Finish	Satin
Strainer	1-1/2" Dia. Duo Basket Strainer

### Includes

- (1) Floor mount sink
- (1) Leg assembly set
- (4) Washers and nuts for connection sink to leg assembly set
- (1) 8" on center faucet
- (1) Faucet mounting kit
- (1) Strainer assembly with basket

### Product Compliance

NSF/ANSI 2 Food Equipment  
NSF/ANSI 61, Section 9  
ASME A112.18.1/CSA B125.1



Part: \_\_\_\_\_ Quantity: \_\_\_\_\_

Project: \_\_\_\_\_

Contact: \_\_\_\_\_

Date: \_\_\_\_\_

Approval: \_\_\_\_\_

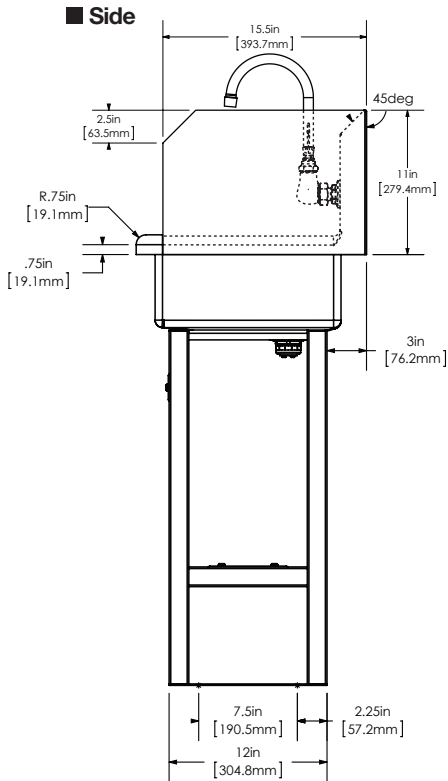
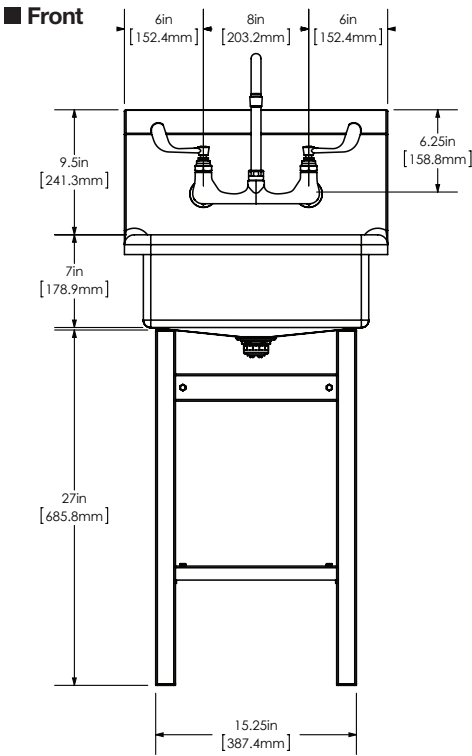
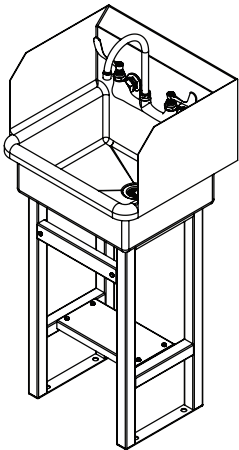
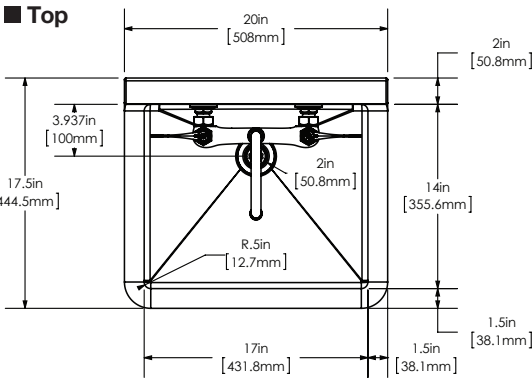
Notes:



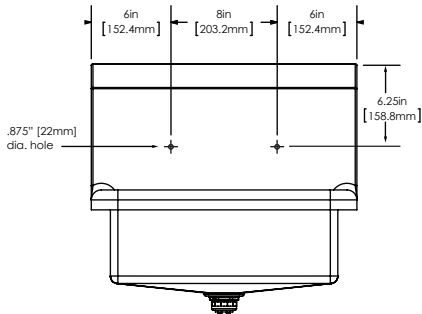
**WARNING:** Equipment that include faucets on this page may contain a chemical known to the State of California to cause cancer, birth defects or other reproductive harm.

**COLUMBIA PRODUCTS**  
800.626.2117 • columbiasinks.com • info@columbiasinks.com

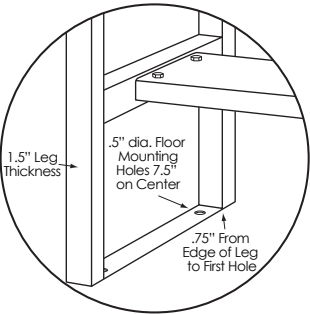
Floor Mount Stainless Steel Sink  
Models 727F and 727F-0.5



■ Hole Configurations



■ Floor Mounting Detail



■ Supply Line Detail

