

Hands-Free Stainless Steel Wall Mount Sink

Model	Sensor Type	Flow-Rate
705A	AC Powered	Standard 2.0 GPM
705A-0.5	AC Powered	Low-Flow 0.5 GPM
705B	Battery Powered	Standard 2.0 GPM
705B-0.5	Battery Powered	Low-Flow 0.5 GPM

Product Specifications

Hands-Free operation is ideal for use in food service applications. Built to last using 16-gauge, type 304 stainless steel. Exposed surfaces have a satin finish.

Outside Dimensions	20" x 17-1/2" x 16-1/2" High
Inside Bowl Size	17" x 14" x 7" Deep
Back Splash Height	9-1/2"
Water Activation	AC or Battery Powered Sensor Faucet
Flow Rate	2 GPM
Inlet Connections	3/8" Male Compression
Drain Opening	2"
Finish	Satin
Strainer	1-1/2" Dia. Duo Basket Strainer
Wall Mounting Bracket	1/4" Dia. Mounting Holes

Includes

- (1) Wall mount sink
- (1) AC or Battery powered sensor faucet assembly
- (1) Wall-mounting bracket
- (2) Support brackets with 4 mounting bolts
- (1) Mixing check valve
- (1) Strainer assembly with basket

Product Compliance

NSF/ANSI 2 Food Equipment
NSF/ANSI 372 Lead-Free Compliant
ASME A112.18.1



Part: _____ Quantity: _____

Project: _____

Contact: _____

Date: _____

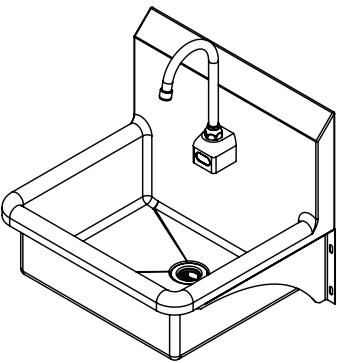
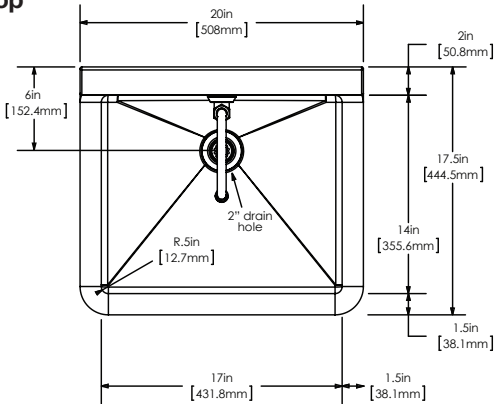
Approval: _____

Notes:

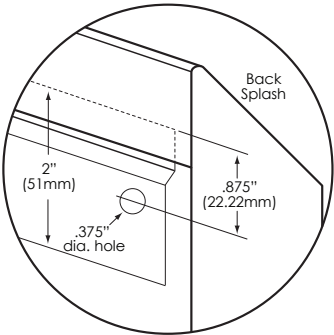


Hands-Free Stainless Steel Wall Mount Sink
Models 705A, 705A-0.5, 705B and 705B-0.5

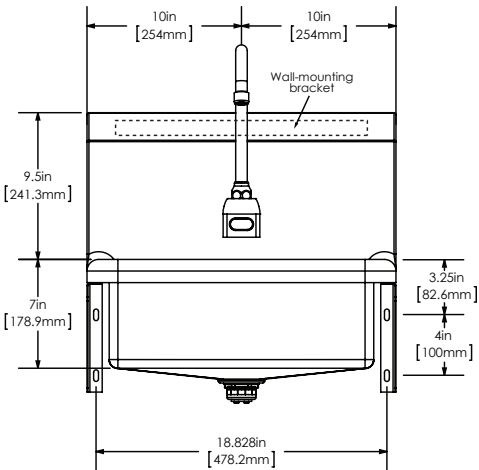
Top



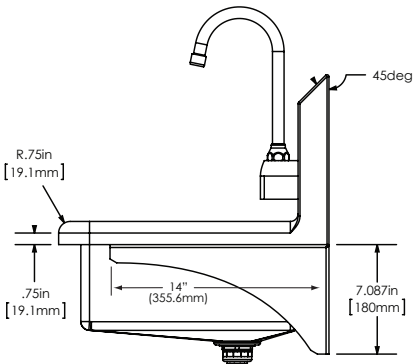
Wall Mounting Detail



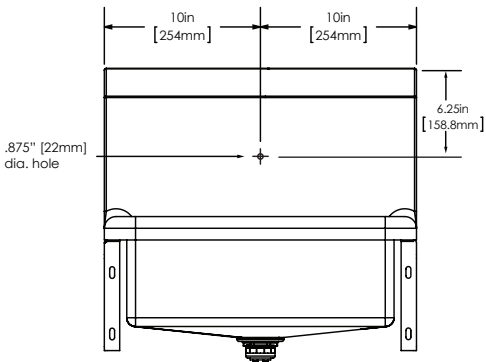
Front



Side



Hole Configuration



SANI-LAV Sensor Faucets

Wall Mounted AC and Battery Powered
Meets ANSI/ASME A112.18.1 M-1989



Operation

- 1. A continuous, invisible beam is emitted from the sensor.
- 2. The faucet is activated by placing hands under the spout within the effective range of the beam. Water starts to flow immediately for as long as the user's hands remain in the sensor range.
- 3. When hands are removed, the water flow stops. The sensor will automatically reset and be ready for the next user.
- 4. In the battery powered version, a flashing red light will indicate a low battery condition.

Specifications

Faucet Construction

Solid brass, chrome plated
Solid state, AC or battery, switchable
Preset at 20 seconds and adjustable to 10, 30, or 60 seconds
2 minute run every 12 hours or 24 hours
60, 120, 180 seconds
Preset and adjustable
Presets and adjustable from 1-8 seconds
Armored, vandal resistant
6V DC, normally closed

Control Circuit

- Auto. Time-out
- Line Purge (request only)
- Scrub Mode Delay (request only)
- Sensor Range
- Shut-off Delay

Control Cable

Solenoid Valve

- Wattage: 0.4W (idle), 5W (in use)
- Operating Pressure: 5 psi to 125 psi

Flow Control

2.0 or 0.5 GPM, Laminar Flow Control

AC Mode

Power Adapter

- Standard Plug-in
 - (UL/CSA)
 - Power Cable
 - Optional Multi-Unit Adapter
 - (UL/CSA)
- Input AC 120V 60 Hz or 220V
Output DC 12V, 0.8A/Class 2
Armored, vandal resistant
Serves up to 8 faucets
Input AC 120V, Output DC 12V, 3A

Battery Mode

Battery Powered Models

(4) AA Alkaline Batteries
400,000 on/off cycles, up to 4 years

Battery Service Life

Package Includes

- (1) Faucet with electronic sensor
- (1) Control box w/6V DC solenoid
- (1) 12V DC plug-in power adaptor (H-6700C, -DC, -LR and -LRDC only)
- (1) In-line filter with clean-out trap
- (1) 18" Flex, S.S. supply tube, 3/8"(1) 6" Gooseneck Spout
- (1) Mounting hardware
- (1) 2.0 GPM Flow Control(4) AA Alkaline batteries (HB-6700C, -DC, -LR, -LRDC only)
- (1) Battery holder (HB-6700C, -DC, -LR, -LRDC only)

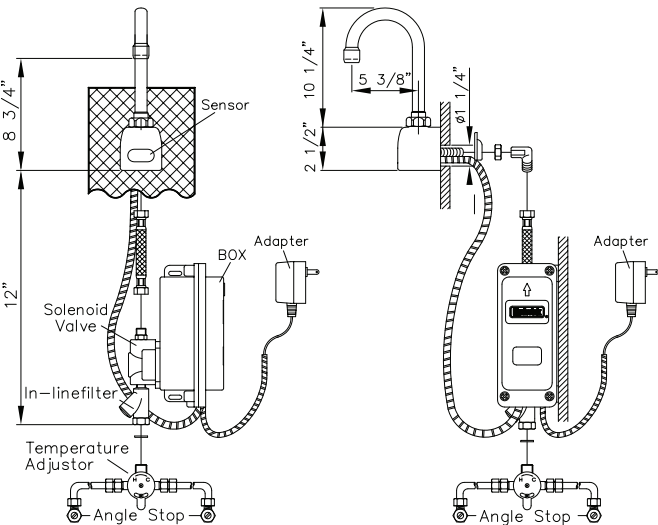
Dimensions

- Base Width (Outside Measurement)
 - Base Depth
 - Faucet Height (Aerator to Base)
 - Faucet Height Overall
 - Depth (Center of Aerator to Center of Faucet Base)
 - Mounting Bolt Length
 - Mounting Bolt Pattern
- 2-1/4"
2-1/2"
8-3/4"
12-3/4"
5-3/8"
1-7/16"
Single-hole mount

Optional Variations and Accessories

- 0.35, 0.5, 1.5, 2.2 GPM Laminar Flow
- HC-010 Multi-Unit Voltage Adapter (AC Powered Only) - 8 units
- HC-0104 Multi-Unit Voltage Adapter (AC Powered Only) - 4 units
- HC-001 Mixing/Check Valve (Mechanical)
- HBL-04-LR Thermostatic Mixing Valve with Checks (Low Lead)
- 8" deep Gooseneck and 6" or 8" Swing Swing SpoutModel

Model	Sensor Type	Flow-Rate
ES2RL	AC Powered	Standard 2.0 GPM
ES2RL-0.5	AC Powered	Low-Flow 0.5 GPM



Model	Sensor Type	Flow-Rate
ESB2RL	Battery Powered	Standard 2.0 GPM
ESB2RL-0.5	Battery Powered	Low-Flow 0.5 GPM

