

4-Person Hands-Free Wall Mount Stainless Steel Wash Station

| Model | Flow-Rate |
|-----------|------------------|
| 58WSL | Standard 2.0 GPM |
| 58WSL-0.5 | Low-Flow 0.5 GPM |

Product Specifications

Constructed from welded #16 gauge type 304 stainless steel. The front, bottom and back are formed from a single sheet with a rolled rim on front and sides. Exposed surfaces have a blended uniform satin finish. Specially designed knee valves provide easy access to working parts without disconnecting mount or plumbing.

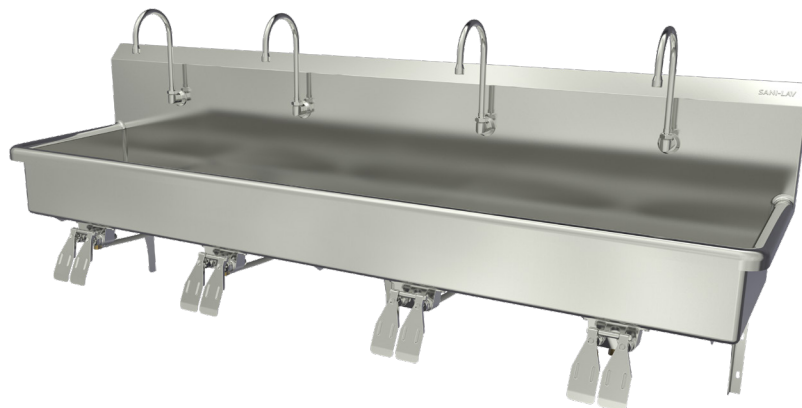
| | |
|-----------------------|---------------------------------|
| Outside Dimensions | 80" x 20" x 18" High |
| Inside Bowl Size | 77" x 16-1/2" x 8" Deep |
| Back Splash Height | 10" |
| Water Activation | Double Knee Pedal Valve |
| Flow Rate | 2 GPM |
| Inlet Connections | 1/2" Male NPT |
| Drain Opening | 2" |
| Finish | Satin |
| Strainer | 1-1/2" Dia. Duo Basket Strainer |
| Wall Mounting Bracket | 1/4" Dia. Mounting Holes |

Includes

- (1) Wall mount wash station
- (4) Double knee pedal valve with 4 nuts
- (4) Swivel gooseneck spout with aerator
- (4) Connecting tube for valve to spout connection
- (8) Fittings, brass, 0.375" male compression and 0.375" male NPT
- (3) Wall-mounting brackets
- (3) Support brackets
- (2) Strainer assembly with basket

Product Compliance

NSF/ANSI 2 Food Equipment
NSF/ANSI 372 Low-Lead



Part: _____ Quantity: _____

Project: _____

Contact: _____

Date: _____

Approval: _____

Notes:



WARNING: Equipment that include faucets on this page may contain a chemical known to the State of California to cause cancer, birth defects or other reproductive harm.

COLUMBIA PRODUCTS
800.626.2117 • columbiasinks.com • info@columbiasinks.com

Technical drawing of a rectangular panel with the following dimensions and features:

- Overall Dimensions:**
 - Length: 80" (1524mm)
 - Width: 20" (508mm)
- Internal Features:**
 - Two circular holes, each labeled "2" drain hole".
 - Diagonal lines forming a diamond shape in the center.
 - Radius dimension: ".5" R (12.7mm) at the bottom left corner.
- Offsets and Spacing:**
 - Top edge offset: 2" (51mm)
 - Bottom edge offset: 1.5" (38mm)
 - Left edge offset: 10.25" (267 mm)
 - Right edge offset: 1.5" (38mm)
 - Distance between holes: 77" (1956mm)
 - Distance from left edge to first hole: 20" (508mm)
 - Distance from second hole to right edge: 20" (508mm)
 - Distance from top edge to diamond center: 16.5" (407mm)
 - Distance from bottom edge to diamond center: 20" (508mm)

Technical drawing of the 1000 Series 4-Port Rack Mountable Filter Assembly, showing dimensions in inches and millimeters.

Dimensions:

- Overall width: 73.75" (1873mm)
- Top panel height: 10" (254mm)
- Top panel radius: .5" R (12.7mm)
- Mounting bracket height: 8" (203mm)
- Front panel height: 4" (101.6mm)
- Bottom panel height: 4" (101.6mm)
- Front panel features: .437" (6mm) dia. hole and .75" (19mm) slot
- Bottom panel features: 1/2" (12.7mm) dia. ports
- Wall-mounting brackets are shown on the top panel.

Side

20" (508mm)

2" (51mm)

45°

7.5" (191mm)

1.5" (38mm)

35" (889mm)
suggested
floor to rim
height

Supply Line
to Spout

16.75"
(425.5mm)

Technical drawing of the top view of the test specimen. The specimen is a rectangular plate with a total length of 100 inches (2540 mm) and a total width of 12 inches (304.8 mm). The drawing shows the following dimensions and features:

- Overall length: 100" (2540 mm)
- Overall width: 12" (304.8 mm)
- Section A-A is indicated by a vertical line on the right side.
- Four holes are located along the length of the plate, with the following center-to-center distances:
 - 11" (280 mm) from the left edge to the first hole.
 - 18" (457 mm) between the first and second holes.
 - 22" (559 mm) between the second and third holes.
 - 18" (457 mm) between the third and fourth holes.
 - 11" (280 mm) from the fourth hole to the right edge.
- The holes have a diameter of .875" (22 mm) and there are 3 holes in total.
- The thickness of the plate is 6" (152.4 mm).

Back Splash

3/8" Male Compression

Supply Line from Valve to Spout

