

6-Person Hands-Free Floor Mount Stainless Steel Wash Station

Model	Flow-Rate
512FSL	Standard 2.0 GPM
512FSL-0.5	Low-Flow 0.5 GPM

Product Specifications

Constructed from welded #16 gauge type 304 stainless steel. The front, bottom and back are formed from a single sheet with a rolled rim on front and sides. Exposed surfaces have a blended uniform satin finish. Specially designed foot valves provide easy access to working parts without disconnecting mount or plumbing.

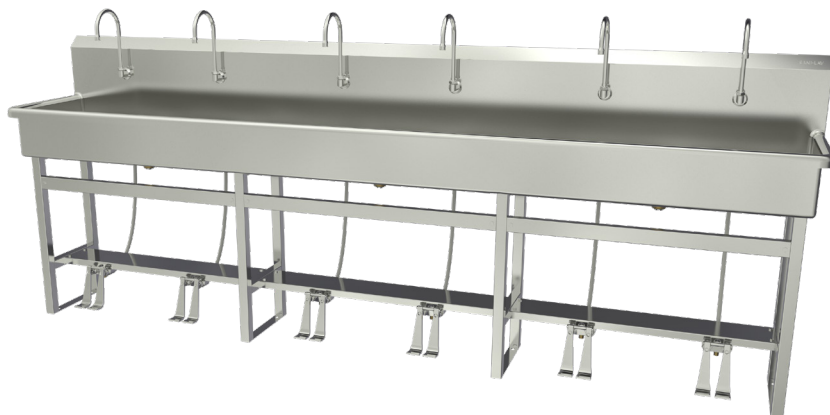
Outside Dimensions	120" x 20" x 45" High
Inside Bowl Size	117" x 16-1/2" x 8" Deep
Back Splash Height	10"
Water Activation	Double Foot Pedal Valve
Flow Rate	2 GPM
Inlet Connections	1/2" Male NPT
Drain Opening	2"
Finish	Satin
Strainer	1-1/2" Dia. Duo Basket Strainer

Includes

- (1) Floor mount wash station
- (1) Leg assembly set
- (8) Washers and nuts for connection sink to leg assembly set
- (6) Double foot pedal valve (bottom mount) with 2 nuts
- (6) Swivel gooseneck spout with aerator
- (6) Connecting tube for valve to spout connection
- (12) Fittings, brass, 0.375" male compression and 0.375" male NPT
- (1) Strainer assembly with basket

Product Compliance

NSF/ANSI 2 Food Equipment
NSF/ANSI 372 Low-Lead



Part: _____ Quantity: _____

Project: _____

Contact: _____

Date: _____

Approval: _____

Notes:



WARNING: Equipment that include faucets on this page may contain a chemical known to the State of California to cause cancer, birth defects or other reproductive harm.

COLUMBIA PRODUCTS
800.626.2117 • columbiasinks.com • info@columbiasinks.com

Technical drawing of a rectangular panel with the following dimensions and features:

- Overall Dimensions:**
 - Length: 120" (3048mm)
 - Width: 20" (508mm)
- Internal Divisions (Horizontal):**
 - 20" (508mm)
 - 40" (1016mm)
 - 40" (1016mm)
 - 20" (508mm)
- Internal Divisions (Vertical):**
 - 10.25" (267mm)
 - 16.5" (407mm)
 - 20" (508mm)
 - 1.5" (38mm)
- Features:**
 - 5" R (12.7mm) corner radius on the left side.
 - 2" drain hole located in the first 20" section.
- Overall Assembly Dimensions:**
 - Total Length: 117" (2972mm)
 - Total Width: 20" (508mm)

Technical drawing of the 600 Series Workbench showing dimensions and components. The drawing includes a side view of the workbench with a 5" R (12.7mm) radius on the front edge. The top surface is 10" (254mm) high, and the front edge is 8" (203mm) high. The workbench has three sections, each 38" (965mm) wide. The total width is 114" (2900mm). The workbench is supported by four legs, each with a castor wheel. The height of the workbench is 27" (686mm). The drawing also shows the internal structure, including the top rail and the support rails.

Side view diagram of the sink and faucet assembly. Dimensions include:

- 20" (508mm) width of the faucet spout
- 2" (51mm) width of the faucet base
- 45° angle of the faucet spout
- 7.5" (191mm) height of the faucet spout
- 7.5" (20mm) height of the faucet base
- 1.5" (38mm) width of the faucet base
- 35" (889mm) floor to rim height
- 9" (228.6mm) height of the mounting holes
- 2.875" (73.02mm) distance from the mounting holes to the spout
- Supply Line to Spout
- mounting holes 9" (228.6mm) on center

Figure 1 shows the elevation view of the test beam. The beam is 120 inches long. The stiffeners are spaced at 11, 18, 22, 18, 22, 18, and 11 inches. The total height of the beam is 6 inches. The stiffeners are labeled with their respective dimensions in inches and millimeters.

1.5" Leg Thickness

.5" dia. Floor Mounting Holes

9" on Center

.75" From Edge of Leg to First Hole

A technical diagram showing a cross-section of a pipe with a 1/2 inch NPT valve inlet and a spout. The diagram is enclosed in a circle. A horizontal dashed line represents the floor level. A vertical dashed line represents the wall. A pipe enters from the left, passes through the wall, and then turns downward. A label ".5\" NPT Valve Inlet" points to the top of the pipe. A label "To Spout" points to the bottom of the pipe. A dimension line indicates a distance of "7\" (177mm) from Floor" from the floor level to the bottom of the pipe.

Back Splash

3/8" Male Compression

Supply Line from Valve to Spout

