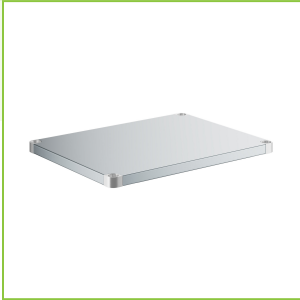




Regency 18-Gauge Galvanized Steel Adjustable Shelf for 30" x 36" Work Tables

#600UT3036G



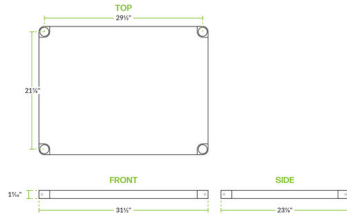
Technical Data

Length	31 1/2 Inches
Width	23 7/8 Inches
Height	1 9/16 Inches
Adjustable Height	Adjustable
Compatible Table Size	30" x 36"
Gauge	18 Gauge
Material	Galvanized Steel
Type	Undershelves

Features

- Durable 18-gauge galvanized steel
- Adjustable design increases storage space
- Corrosion-resistant material
- Designed for use with Regency 30" x 36" 18-gauge stainless steel work tables
- Ideal for commercial settings

Plan View



Notes & Details

Enhance your commercial kitchen's storage capabilities with the Regency adjustable work table shelf. Crafted from durable 18-gauge galvanized steel, this adjustable shelf is built to last in busy kitchen environments. The adjustable design allows you to customize the shelf to meet your storage needs, maximizing space and organization. Its corrosion-resistant material ensures long-lasting use, even in high-moisture areas. Designed specifically for use with Regency 30" x 36" 18-gauge stainless steel work tables, this shelf seamlessly integrates into your existing setup, providing additional storage for utensils and small appliances.

Perfect for commercial settings such as restaurants, cafeterias, and catering facilities, this adjustable work table shelf is a versatile and practical storage solution. The simple installation process makes it easy to set up, allowing you to quickly expand your storage capabilities. Additionally, the galvanized steel material is easy to clean, helping you maintain a sanitary and organized kitchen environment. Upgrade your kitchen storage with this adjustable work table shelf and enjoy enhanced efficiency and convenience in your foodservice operation.

This undershelf is designed to fit select 30" x 36" Regency work tables. Its actual dimensions are shorter than the table in length and width because the table legs are set in under the table top.



WARNING: This product can expose you to chemicals including lead, which are known to the State of California to cause cancer and birth defects or other reproductive harm. For more information, go to www.p65warnings.ca.gov.