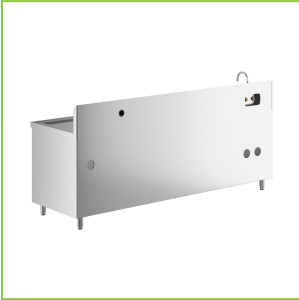




Regency 30" x 96" 16 Gauge Stainless Steel Beverage Table with Left Sink and 6" Swivel Gooseneck Spout

#600TBV3096LF



Technical Data

Length	96 Inches
Width	30 Inches
Height	45 1/2 Inches
Spout Length	6 Inches
Bowl Depth	10 Inches
Backsplash Height	10 Inches
Faucet Height	9 5/8 Inches
Work Surface Height	35 1/2 Inches
Backsplash	With Backsplash
Bottom Shelf Capacity	1000 lb.

Features

- Includes 10" x 14" x 10" sink, electrical outlet, and storage shelves
- Durable 16 gauge, type 304 stainless steel countertop and sink
- 18 gauge, type 430 stainless steel cabinet with swinging door
- Comes with 6" long x 9 1/2" tall swivel gooseneck spout and 1 1/2" drain basket
- Faucet features a 2 GPM flow rate, 4" centers, and 1/2" NPS inlets

Certifications

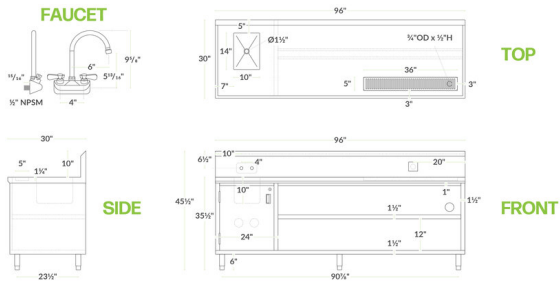
 NSF Listed

 1/2" Water Connection

Technical Data

Bowl Front to Back	14 Inches
Bowl Left to Right	10 Inches
Faucet Centers	4 Inches
Features	NSF Listed Power Outlet Sink
Flow Rate	2 GPM
Gauge	16 Gauge
Included	Faucet
Leg Construction	Stainless Steel
Mid-Shelf Capacity	700 lb.
Spout Clearance	5 13/16 Inches
Spout Type	Gooseneck
Stainless Steel Type	Type 304
Table Style	Undershelf
Top Shelf Capacity	1400 lb.
Type	Beverage Tables Work Tables with Sink
Water Inlet Size	1/2 Inches

Plan View



Notes & Details

The Regency 30" x 96" beverage table is the perfect multi-purpose drink station for diners, hotel kitchens, or cafeterias. This beverage table features a full length 10" backsplash equipped with a GFI duplex electrical outlet, which provides an easy way to plug in a coffee machine or a cold beverage dispenser. A 10" x 14" x 10" deep-drawn sink is conveniently located on the left side of the table for hand washing or dishwashing, while the cabinet underneath the sink has a swinging door that grants access to the sink components. Plus, the cabinet can be locked, and two keys are included. This table also includes two open shelves with ample storage for mugs, glassware, dinnerware, or trays.

The sink and countertop are constructed from heavy-duty, 16 gauge type 304 stainless steel, which is corrosion-resistant. The countertop features marine edges that contain drips and spills by channeling them into the table's built-in urn trough. Additionally, the cabinet and shelves are constructed from 18 gauge type 430 stainless steel, prolonging the life of your beverage table and adding exceptional strength to the unit.

This unit comes with a built-in faucet that is mounted to the pair of 4" centers on the sink's backsplash. Thanks to its 6" long and 9 1/2" tall swivel gooseneck spout, this faucet delivers water exactly where you need it. The faucet's hinged design gives maximum flexibility when washing your hands while also letting you fold it out of the way when it's not being used. Water exits the faucet with a 2 GPM flow rate, which creates a soft flow pattern with minimal splashing. It connects to the facility water lines with a set of 1/2" NPS inlets. The faucet body is made from chrome-plated brass which is great for commercial use. Plus, its water flow is controlled by a pair of simple lever handles, making it easy to use.

 **WARNING:** This product can expose you to chemicals including lead, which are known to the State of California to cause cancer and birth defects or other reproductive harm. For more information, go to www.p65warnings.ca.gov.