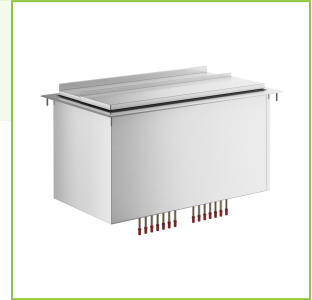




## Regency 18" x 30" Stainless Steel Drop-In Ice Bin with Sliding Lid and 7 Circuit Post-Mix Cold Plate - 65 lb.

#600IB3018CP



### Technical Data

Length	30 Inches
Width	18 Inches
Height	14 5/16 Inches
Cutout Length	27 7/8 Inches
Ice Bin Length	26 1/8 Inches
Cutout Width	15 1/4 Inches
Ice Bin Width	13 1/2 Inches
Ice Bin Depth	10 7/8 Inches
Capacity	65 lb.
Drain Outlet Size	1 Inch

### Features

- Made of 20 gauge, corrosion-resistant type 304 stainless steel
- 1" NPT stainless steel drain
- 7 circuit post-mix cold plate chills up to 7 different beverage lines
- Stainless steel sliding lid included
- Perfect for storing ice conveniently close at hand

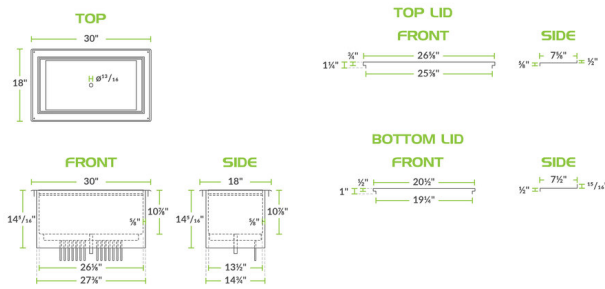
### Certifications



## Technical Data

Features	NSF Certified
Gauge	20 Gauge
Installation Type	Drop-In
Lid	With Lid
Material	Stainless Steel
Number of Cold Plate Circuits	7 Circuits
Stainless Steel Type	Type 304
Type	Drop-In Ice Bins With Cold Plate

## Plan View



## Notes & Details

Whether you're serving up a delicious cocktail or a refreshing soda, ensure you have a steady supply of cold beverages at your bar with this Regency drop-in ice bin! This convenient unit not only holds 65 lb. of ice but also boasts a post-mix cold plate with stainless steel, beverage-grade tubing circuits that allow you to run up to 7 soda lines through the bin to chill them before serving. The interior bowl holds ice, while a stainless steel sliding cover is included to ensure proper insulation and protect the ice from contamination.

This standard-duty ice bin is constructed of 20 gauge, corrosion-resistant type 304 stainless steel and features foam insulation to help keep the bin's contents cooler longer. A 1" NPT stainless steel drain safely drains melted ice water from the unit, so you're only left with solid pieces. With its 65 lb. ice capacity, this bin holds plenty of ice to keep your operation going, customer after customer. With a 10 7/8" deep cavity, this chest can accommodate drink-serving operations of nearly any size.