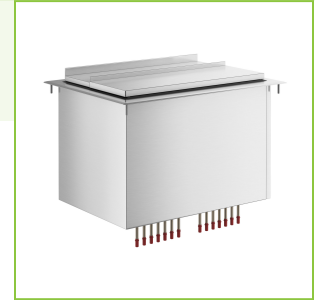




Regency 18" x 24" Stainless Steel Drop-In Ice Bin with Sliding Lid and 7 Circuit Post-Mix Cold Plate - 65 lb.

#600IB2418CP



Technical Data

| | |
|-------------------|----------------|
| Length | 24 Inches |
| Width | 18 Inches |
| Height | 14 5/16 Inches |
| Cutout Length | 21 7/8 Inches |
| Ice Bin Length | 20 1/8 Inches |
| Cutout Width | 15 1/4 Inches |
| Ice Bin Width | 13 1/2 Inches |
| Ice Bin Depth | 10 7/8 Inches |
| Capacity | 65 lb. |
| Drain Outlet Size | 1 Inch |

Features

- Made of 20 gauge, corrosion-resistant type 304 stainless steel
- 1" NPT stainless steel drain
- 7 circuit post-mix cold plate chills up to 7 different beverage lines
- Stainless steel sliding lid included
- Perfect for storing ice conveniently close at hand

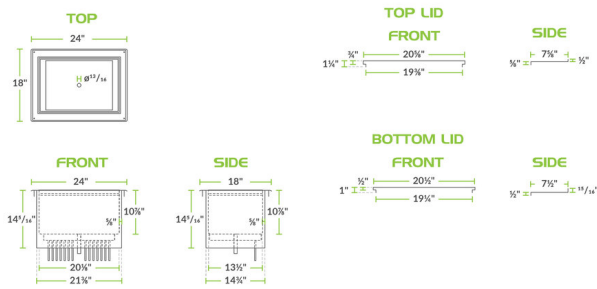
Certifications



Technical Data

| | |
|-------------------------------|----------------------------------|
| Features | NSF Certified |
| Gauge | 20 Gauge |
| Installation Type | Drop-In |
| Lid | With Lid |
| Material | Stainless Steel |
| Number of Cold Plate Circuits | 7 Circuits |
| Stainless Steel Type | Type 304 |
| Type | Drop-In Ice Bins With Cold Plate |

Plan View



Notes & Details

Whether you're serving up a delicious cocktail or a refreshing soda, ensure you have a steady supply of cold beverages at your bar with this Regency drop-in ice bin! This convenient unit not only holds 65 lb. of ice but also boasts a post-mix cold plate with stainless steel, beverage-grade tubing circuits that allow you to run up to 7 soda lines through the bin to chill them before serving. The interior bowl holds ice, while a stainless steel sliding cover is included to ensure proper insulation and protect the ice from contamination.

This standard-duty ice bin is constructed of 20 gauge, corrosion-resistant type 304 stainless steel and features foam insulation to help keep the bin's contents cooler longer. A 1" NPT stainless steel drain safely drains melted ice water from the unit, so you're only left with solid pieces. With its 65 lb. ice capacity, this bin holds plenty of ice to keep your operation going, customer after customer. With a 10 7/8" deep cavity, this chest can accommodate drink-serving operations of nearly any size.