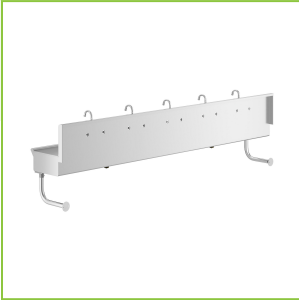




Regency Wall-Mounted 120" x 17 1/2" Hand Sink with (5) 8" Center Faucets

#600HSMSF18120



Technical Data

Length	120 Inches
Width	17 1/2 Inches
Height	18 Inches
Spout Length	3 1/2 Inches
Bowl Depth	8 Inches
Backsplash Height	10 Inches
Faucet Height	8 Inches
Backsplash	With Backsplash
Basket Drain Size	3 1/2 Inches
Bowl Front to Back	13 3/4 Inches

Features

- Made from rugged 16 gauge type 304 stainless steel
- Punched with 5 sets of 8" centers and includes five wall-mount gooseneck faucets
- Features an 8" deep bowl with a 1 1/2" IPS drain connection and includes (2) 3 1/2" drain baskets
- Faucets have 2 GPM aerators and 1/2" NPT inlets
- 1 5/8" tubular wall brackets and 2 stainless steel Z brackets facilitate installation

Certifications



Technical Data


Bowl Left to Right	120 Inches
Color	Silver
Drain Outlet Size	1 1/2 Inches
Faucet Centers	8 Inches
Features	Multi-Station
Flow Rate	2 GPM
Gauge	16 Gauge
Handle Type	Lever
Included	Faucet
Installation Type	Wall Mounted
Material	Stainless Steel
Number of Compartments	1 Compartment
Number of Drainboards	None
Number of Faucets	5 Faucets
Spout Clearance	5 1/8 Inches
Spout Type	Gooseneck
Stainless Steel Type	Type 304
Temperature Rating	40 - 140 Degrees F
Type	Hand Sinks
Water Inlet Size	1/2 Inches

Notes & Details

Maintain a sanitary environment in your auto garage, distribution center, or manufacturing facility by giving your employees a convenient way to quickly wash their hands with this Regency multi-station hand sink with 5 faucets! Made of rugged 16 gauge type 304 stainless steel, this sink is not only rust- and corrosion-resistant, it's extremely durable and built for everyday commercial use. Perfect for industrial applications, the advantage of a multi-station sink is that employees don't have to wait their turn to clean up.

This wall-mounted sink station includes 5 sets of 8" centers with 5 double inlet faucets. These 8" faucets have 2 GPM aerators and 1/2" NPT inlets. Their gooseneck design provides the right amount of clearance for handwashing. Likewise, the spacious 8" deep sink bowl is designed to accommodate multiple users for handwashing applications. With a temperature rating of 40 to 140 degrees Fahrenheit, this sink is perfect for a variety of uses.

Designed for wall-mounting, this sink includes (2) 1 5/8" tubular wall brackets and 2 stainless steel Z brackets. Installation is simple, and the wall brackets ensure that the sink is stable and fully supported while allowing full clearance underneath. A 10" high back splash protects your walls from splashing and water damage. Plus, this sink includes (2) 3 1/2" drain baskets to keep your drain clog-free. For safety, the outer edge of the sink bowl is curled under to eliminate any sharp edges. This sink helps to maintain cleanliness in your business and prevent the spread of germs, keeping your employees healthy.

 **WARNING:** This product can expose you to chemicals including lead, which are known to the State of California to cause cancer and birth defects or other reproductive harm. For more information, go to www.p65warnings.ca.gov.