



Regency 30" x 48" 16 Gauge Type 304 Stainless Steel Enclosed Base Table with Sliding Doors and Adjustable Midshelf

#600EBT3048D



Technical Data

| | |
|---------------------|--------------------|
| Length | 48 Inches |
| Width | 30 Inches |
| Height | 36 Inches |
| Backsplash Height | Without Backsplash |
| Work Surface Height | 36 Inches |
| Backsplash | Without Backsplash |
| Door Style | Sliding |
| Features | NSF Listed |
| Gauge | 16 Gauge |
| Number of Doors | 2 Doors |

Features

- Durable 18 gauge type 430 stainless steel body with 16 gauge type 304 stainless top
- Enclosed style body provides concealed storage
- Adjustable/removable stainless steel midshelf maximizes storage capacity
- Two sliding doors include recessed handles
- Large 30" x 48" worktop for plenty of working room

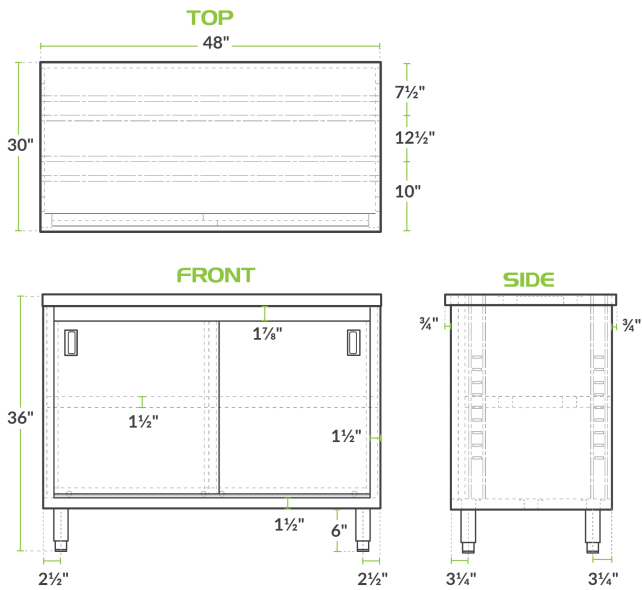
Certifications



Technical Data

| | |
|----------------------|-----------------|
| Size | 30" x 48" |
| Stainless Steel Type | Type 304 |
| Table Style | Enclosed Base |
| Tabletop Material | Stainless Steel |
| Top Capacity | 690 lb. |


Plan View



Notes & Details

With both ample work space as well as storage space, this Regency 30" x 48" 16 gauge type 304 stainless steel enclosed base table will ensure your establishment is efficient and organized! A large 30" x 48" worktop will give you plenty of room to operate and is made of durable 16 gauge type 304 stainless steel. Plus, with a body made of 18 gauge type 430 stainless steel, this enclosed base table is made to hold up to the wear and tear of the busiest kitchens.

The adjustable/removable midshelf allows you to maximize the storage space and fit both large as well as small items. The sliding doors fully conceal the base's contents and include recessed handles for minimal required front clearance. In order to keep your items secure, the doors come with built-in locks, as well as a set of keys. Bullet style feet easily adjust up and down so that your base can be leveled on uneven surfaces.

 **WARNING:** This product can expose you to chemicals including lead, which are known to the State of California to cause cancer and birth defects or other reproductive harm. For more information, go to www.p65warnings.ca.gov.