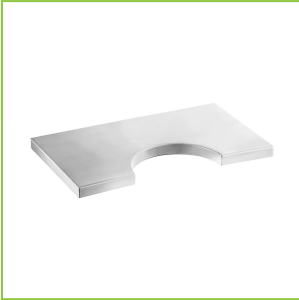




Regency 14" x 8" Stainless Steel Surface Mount Beer Drip Tray with 3" Column Cutout

#600BDR814SC



Technical Data

Width	14 Inches
Depth	8 Inches
Height	3/4 Inch
Color	Silver
Features	Column Cutout Dishwasher Safe NSF Listed
Gauge	18 Gauge
Material	Stainless Steel

Features

- Provides the perfect spot for bartenders to set drinks before serving
- Drip tray helps drain excess beer and foam to ensure cleanliness
- 18 gauge, type 304 stainless steel construction
- Removable perforated grate for quick and easy cleanup
- Includes cutout for a 3" column tower

Certifications



Dishwasher Safe

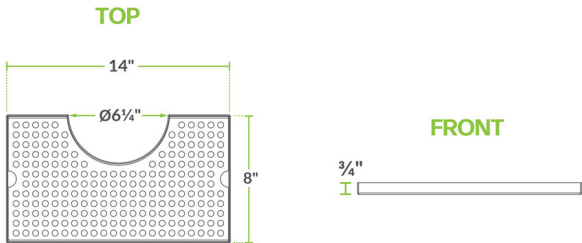


NSF Listed

Technical Data

Mounting Style	Surface Mounted
Shape	Rectangle
Type	Drip Trays

Plan View



Notes & Details

Keep your countertops and floors clean in your bar or club with the help of this Regency beer drip tray. Featuring a surface mount design and a 3" column cutout for easy installation around your existing beer tower, this product provides the perfect spot for bartenders to funnel away beer foam or set drinks down before serving. Working to catch any overflow and prevent drips and spills before they reach the surrounding surfaces, this drip tray ensures the utmost safety by minimizing the risk of your bartenders or customers slipping on the wet floor.

Made of 18 gauge, type 304 stainless steel, you can expect a tough and durable composition, as well as the benefit of being non-corrosive. Plus, the included perforated top grate features drain holes and is removable for easy cleaning and maintenance. Perfect for catching spilled drinks and beer foam, equip your high-volume bar, pub, or club with this drip tray to keep your space sanitary and up to code!

 **WARNING:** This product can expose you to chemicals including lead, which are known to the State of California to cause cancer and birth defects or other reproductive harm. For more information, go to [www.p65warnings.ca.gov](http://www.p65warnings.ca.gov).