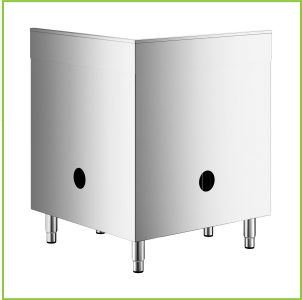




Regency Spec Line 30" x 30" 14 Gauge Stainless Steel Corner Work Table with Sink, Hinged Door, and Lock

#600TSSC3030C



Technical Data

| | |
|---------------------|-----------------|
| Length | 30 Inches |
| Width | 30 Inches |
| Height | 38 Inches |
| Bowl Depth | 5 Inches |
| Backsplash Height | 4 Inches |
| Work Surface Height | 34 Inches |
| Backsplash | With Backsplash |
| Bowl Front to Back | 9 Inches |
| Bowl Left to Right | 9 Inches |
| Color | Silver |

Features

- Durable 14 gauge, type 304 stainless steel top
- Cabinet has a hinged door and lock with two keys
- Includes sink with 9" x 9" x 5" bowl; 4" backsplash
- 18 gauge, type 430 stainless steel body fits into corner to maximize space
- Legs can be adjusted from 5" to 7" in height

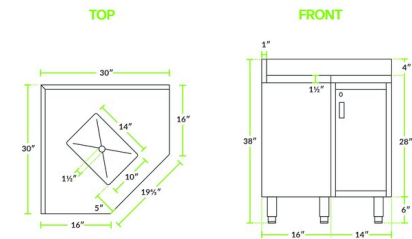
Certifications



Technical Data

| | |
|----------------------|-----------------------|
| Features | NSF Listed |
| Gauge | 14 - 18 Gauge |
| Leg Construction | Stainless Steel |
| Material | Stainless Steel |
| Stainless Steel Type | Type 304 Type 430 |
| Table Style | Enclosed Base |
| Type | Work Tables with Sink |

Plan View



600TSSC3030C

Notes & Details

Make the most of your work space with this Regency Spec Line 30" x 30" corner work table with sink, hinged door, and lock. The top of this work table is constructed from 14 gauge, type 304 stainless steel, while the body is constructed from 18 gauge, type 430 stainless steel. The durable stainless steel construction ensures that this table can withstand the rigors of daily use in a commercial kitchen. This table fits into corners to maximize space in your crowded kitchen.

This table includes a 9" x 8" x 5" sink with 4" centers. The base has a cabinet with a hinged door and a lock with two keys for safe storage. For maximum stability, it has stainless steel legs that can be adjusted from 5" to 7" in height. Save space in your kitchen with this corner work table!

⚠ WARNING: This product can expose you to chemicals including lead, which are known to the State of California to cause cancer and birth defects or other reproductive harm. For more information, go to www.p65warnings.ca.gov.