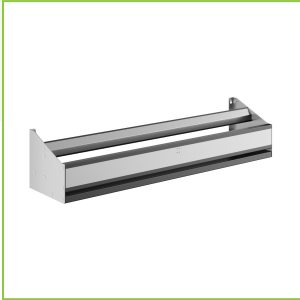




Regency Spec Line 42" Stainless Steel Double Tier Speed Rail  
#600SRD42S



Technical Data

Length	42 Inches
Width	10 Inches
Height	8 3/4 Inches
Capacity	20 Bottles
Color	Silver
Gauge	14 - 20 Gauge
Material	Stainless Steel
Style	Double

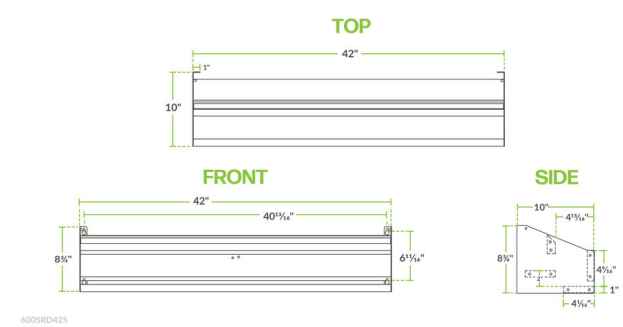
Features

- 20 standard bottle (fifth) capacity
- 20 gauge stainless steel front and bottom with 14 gauge stainless steel sides
- Superior sound-deadened construction
- Simple keyhole installation (mounting hardware included)
- Keeps bottles organized and easily within reach

Technical Data

Mounting Style	Keyholes Screw-Mounted
Type	Speed Rails

Plan View



Notes & Details

Create easy access to your most popular liquors with this Regency Spec Line stainless steel double tier speed rail! Use this rail in your front-of-house bar to keep bottles organized and easily accessible during happy hour. This speed rail can hold up to (20) 1 liter bottles at a time. Plus, with superior sound-deadened construction, removing and adding bottles is quieter than ever!

The 20 gauge stainless steel front and bottom with 14 gauge stainless steel sides add durability, in addition to a polished, professional look. Additionally, it is easy to clean when not in use. A simple keyhole installation design makes it a breeze to set this speed rail up for use (mounting hardware included). A double tier design helps outfit your operation with unmistakable practicality and style that will serve as an essential part of any drink-serving application.