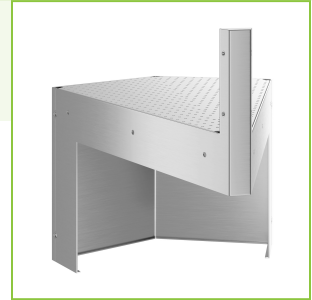
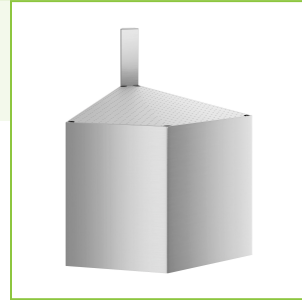




Regency Spec Line 24" x 24" 45-Degree Angle Outside Corner Underbar Filler

#600CFO2445S



Technical Data

Length	24 Inches
Width	26 1/4 Inches
Height	22 7/16 Inches
Backsplash Height	7 Inches
Backsplash	With Backsplash
Drain Size	1 Inch
Features	Spec Line
Gauge	20 Gauge

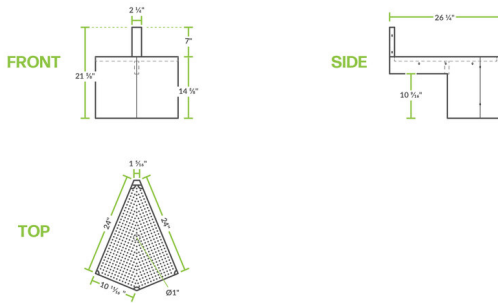
Features

- Durable 20 gauge stainless steel construction
- Easy installation on Regency Spec Line underbar equipment (sold separately)
- Features a removable perforated drainboard with 1" IPS drain for easy cleaning and drainage
- 7" backsplash helps to contain liquids and spillage
- 45-degree angle creates a seamless appearance

Technical Data

Material	Stainless Steel
Product Line	Regency Spec Line
Type	Fillers

Plan View



Notes & Details

Create a seamless underbar setup with this Regency Spec Line 24" x 24" 45-degree angle outside corner underbar filler. This unit features a 20 gauge stainless steel construction with a removable perforated drainboard and 1" IPS drain. The drainboard is designed to collect spills and drips, while the drain channel allows liquids to flow through the unit and into a waste line. Its stainless steel construction is durable and easy to clean, making it ideal for high-traffic areas.

The angle of the unit creates a seamless appearance when paired with Regency Spec Line underbar equipment (sold separately). Its 7" backsplash helps to contain liquids and spillage. This unit is designed for easy installation and is perfect for use in bars, restaurants, and other commercial foodservice establishments.