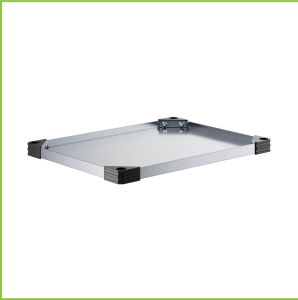




Regency 18" x 24" NSF Galvanized Steel Solid Shelf
#460SG1824



Technical Data

Length	24 Inches
Width	18 Inches
Capacity	600 lb.
Casters	Without Casters
Color	Silver
Component Type	Shelves Solid Shelves
Features	NSF Listed
Gauge	18 Gauge
Material	Galvanized Steel

Features

- Made of 18 gauge galvanized steel
- 600 lb. capacity
- Raised edges help contain stored contents
- Great for small items including ingredient, retail, and industrial storage
- 4 pairs of split sleeves make setup a breeze

Certifications




Technical Data

Number of Shelves	1 Shelf
Style	Solid
Type	Components Shelves
Usage	Back of House Dry Environments Front of House Garage Kitchens Retail Stock Rooms Warehouse

Notes & Details

A great way to add a convenient storage solution to a wide variety of operations, this Regency solid shelf offers the reliable performance you need and demand! Unlike wire shelving where small components may slip through the cracks or leaking packages may contaminate products on lower shelves, this solid shelf allows you to confidently store products of any type and size. Plus, the raised edges help keep stored contents contained, preventing messes from spills or leaks. An excellent option for kitchen, retail, or industrial storage, this shelf is a must-have for all your storage needs.

Thanks to its durable 18 gauge galvanized steel construction, this shelf can stand up to use as a convenient storage option in your busy establishment. Its solid, flat surface also makes it extremely simple to clean. When combined with additional shelves, posts, and accessories (sold separately), this shelf is capable of holding up to an impressive 600 lb. of evenly distributed weight. This shelf comes with 4 pairs of split sleeves for quick and easy setup and installation.

 **WARNING:** This product can expose you to chemicals including lead, which are known to the State of California to cause cancer and birth defects or other reproductive harm. For more information, go to www.p65warnings.ca.gov.