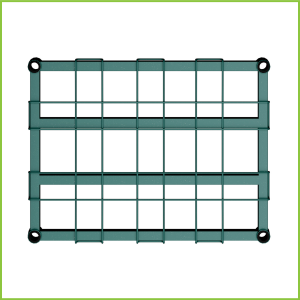
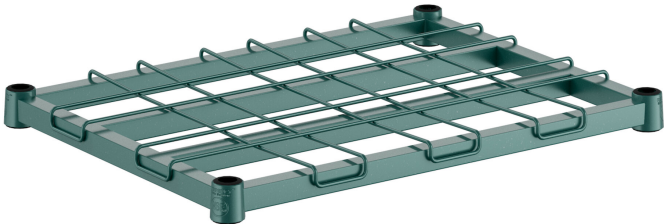




Regency 18" x 24" Green Epoxy Heavy-Duty Dunnage Shelf with Wire Mat - 800 lb. Capacity

#460EG1824HD



Technical Data

Length	24 Inches
Width	18 Inches
Capacity	800 lb.
Capacity Rating	Light Duty
Casters	Without Casters
Color	Green
Component Type	Heavy-Duty Shelves Shelves
Features	NSF Listed
Finish	Green Epoxy

Features

- Rugged green epoxy dunnage shelf with removable wire mat
- Maintains airflow of wire shelving but with greater strength for heavier storage
- Great for humid and refrigerated storage environments
- Includes 4 pairs of split sleeves
- 800 lb. capacity

Certifications




## Technical Data

Material	Metal Wire
Style	Tubular
Type	Components
Usage	Heavy Duty

## Notes & Details

To safely store your heaviest ingredients and other products, look no further than this Regency 18" x 24" green epoxy heavy-duty dunnage shelf! The rugged green epoxy square tubing combines with a wire mat to give you a perfect storage solution for walk-in coolers, warewashing areas, and other humid environments, providing the same airflow benefits as wire shelving but with greater strength for heavier storage. With an 800 lb. capacity, this shelf allows you to confidently store your heaviest tubs of ice cream, cleaning products, and other hefty supplies. For added convenience, the wire mat can be removed for a simple yet thorough cleaning.

 **WARNING:** This product can expose you to chemicals including lead, which are known to the State of California to cause cancer and birth defects or other reproductive harm. For more information, go to [www.p65warnings.ca.gov](http://www.p65warnings.ca.gov).