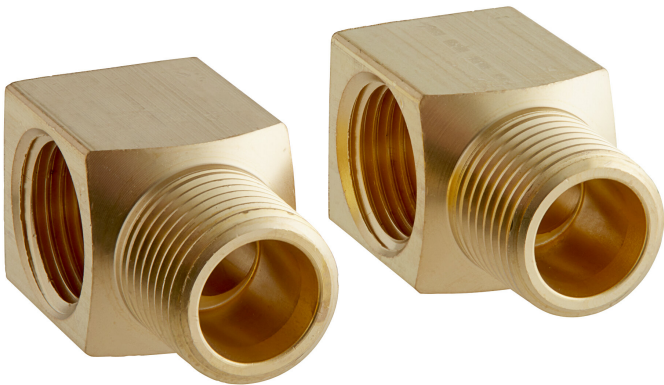




Regency Faucet Installation Kit with Elbows and 1/2" NPT Connection

#600FIK12NPTELBOWS



Technical Data

Length	1 3/4 Inches
Connection Type	1/2 NPT
Features	NSF/ANSI 372 NSF/ANSI 61
Type	Installation Kits Mechanical Parts
Water Inlet Size	1/2 Inches

Features

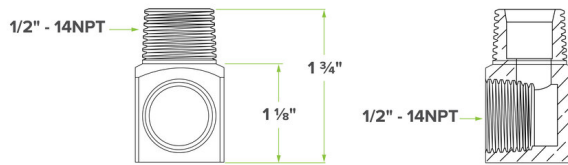
- For new installation or replacement of an existing part
- Contains short elbows with 1/2" NPT male and female threads
- Primarily for use on wall-mounted workboard faucets with 1/2" NPT inlets
- For new installation or replacement of an existing part

Certifications

 CSA, US and Canada

 1/2" Water Connection

Plan View



Notes & Details

Use this Regency faucet installation kit to effortlessly install a new faucet in your establishment. Perfect for installing new components or replacing existing parts, this elbow kit can be used to install many popular wall-mounted workboard or backsplash mounted faucets with 1/2" NPT inlets.

Kit Includes:

- (2) 1 3/4" L x 1/2" NPT short elbows, male and female threads

⚠ WARNING: This product can expose you to chemicals including lead, which are known to the State of California to cause cancer and birth defects or other reproductive harm. For more information, go to www.p65warnings.ca.gov.