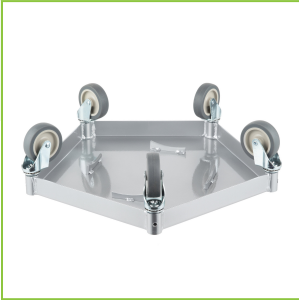




Regency KPD-500 Heavy-Duty Keg / Pail Dolly - 400 lb. Capacity

#600KPD500



Technical Data

Length	17 Inches
Width	17 Inches
Height	5 Inches
Capacity	400 lb.
Material	Metal
Type	Keg Dollies / Trucks

Features

- Lightweight, durable, full welded metal design
- 400 lb. capacity holds full-size kegs, barrels, and pails
- Four welded surface notches lock kegs and pails in place for safe transportation
- Easy maneuverability with five sturdy swivel casters
- Reduces risk of injury from heavy lifting

Notes & Details

This Regency KPD-400 heavy-duty keg / pail truck will make transporting a keg or garbage pail a simple task! This unit utilizes a sturdy, lightweight welded metal frame to hold kegs and pails up to 400 lb.

It's low to the ground, too, which eases the effort necessary to load the dolly, thus reducing the risk of injury. Four welded surface notches will lock your load in place, ensuring safe transportation throughout your establishment. Its five swivel casters allow for smooth maneuvering of kegs and pails. Because this dolly has a 400 lb. capacity, you can use a Regency spacer or stacker (sold separately) to boost the capacity to hold two kegs at once, saving space and reducing extra movement.