

Woodart

They're like actual slices of a tree cross-section, but are made of the finest porcelain. Woodart radiates calm and warmth while conveying the strength of wood.



FLAT COUPE PLATES



- WDNNPR29 11 $\frac{1}{4}$ " D 12
- WDNNPR27 10 $\frac{1}{2}$ " D 12
- WDNNPR24 9 $\frac{1}{2}$ " D 12
- WDNNPR21 8 $\frac{1}{4}$ " D 12
- WDNNPR15 6" D 24

SQUARE COUPE PLATE



- WDEDSQ30 12" L 12" W 6

RECTANGULAR COUPE SERVING PLATE



- WDEDRG33 13 $\frac{1}{2}$ " L 7 $\frac{1}{2}$ " W 6

DEEP COUPE PLATES / PASTA BOWLS



- WDBUBC26 40 $\frac{1}{2}$ oz 10 $\frac{1}{4}$ " D 2" H 12
- WDNNDP23 23 $\frac{1}{2}$ oz 9" D 1 $\frac{1}{2}$ " H 12

BOWLS



- WDNNBW12 9 $\frac{1}{2}$ oz 4 $\frac{1}{2}$ " D 2 $\frac{1}{2}$ " H 12
- WDNNBW10 5 $\frac{1}{2}$ oz 4" D 2" H 12
- WDNNBW09 3 $\frac{1}{2}$ oz 3 $\frac{1}{2}$ " D 1 $\frac{1}{2}$ " H 12

CEREAL BOWL



- WDNNBW20 30 $\frac{1}{2}$ oz 7 $\frac{1}{2}$ " D 6

RICE BOWL



- WDNNRB16 19 $\frac{1}{2}$ oz 6 $\frac{1}{2}$ " D 2 $\frac{1}{2}$ " H 12

CUPS



- WDCLCU28 9 $\frac{1}{2}$ oz 3 $\frac{1}{2}$ " D 3 $\frac{1}{2}$ " H 12
- WDCLCU20 6 $\frac{1}{4}$ oz 3 $\frac{1}{2}$ " D 2 $\frac{3}{4}$ " H 12
- WDCLCU23 7 $\frac{1}{2}$ oz 3 $\frac{1}{2}$ " D 3" H 12
- WDCLCU09 3 oz 2 $\frac{1}{2}$ " D 2 $\frac{1}{2}$ " H 12

SAUCER



- WDCLSA17 6 $\frac{1}{2}$ " D 12
Compatible with WDCLCU28

SAUCER



- WDCLSA15 6" D 1 $\frac{1}{2}$ " H 12
Compatible with WDCLCU23, WDCLCU20

SAUCER



- WDCLSA13 5" D 1 $\frac{1}{2}$ " H 12
Compatible with WDCLCU09

TEAPOT W/ LID



- WDCLTP40 13 $\frac{1}{2}$ oz 4 $\frac{3}{8}$ " D 4 $\frac{1}{4}$ " H 4

Additional color information. See page 306



FUSION / Woodart

COFFEE POT W/ LID



WDCLCP35 11½ oz 3½" D 5½" H 4

CREAMER



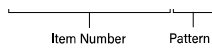
WDCLCR15 5 oz 2½" D 2¾" H 12

HOW TO GET THE CORRECT PRODUCT REFERENCE:

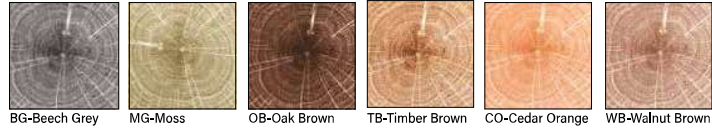
Add the pattern code after the item number from the listing to get the complete product reference.

Example:

Flat Coupe Plate, 11½", Beech Grey = **WDNNPR29BG**



WOODART COLORS:



BG-Beech Grey MG-Moss OB-Oak Brown TB-Timber Brown CO-Cedar Orange WB-Walnut Brown



Compliments of Walk-In Talk Podcast
CHEF CARL RIDING
Jalapeno Popper Stuffed Pork Loin
over Cinnamon Bourbon, Blackberry Glaze

"We're thrilled to partner with RAK Porcelain to deliver insights on the integral role of tableware in a restaurant's brand," said Carl Fiadini, founder of Walk-In Talk Media. "This collaboration is a unique opportunity to hear directly from chefs and operators, showcasing how thoughtfully selected tableware can elevate the dining experience."



Scan here for more information about Walk-In Talk Media and to hear the podcast.

Photo courtesy of Walk-In Talk Podcast and iStock Images

