

Baantna

Where tradition meets nonconformity. Rich and rustic, Baantna was made to hold and adds real presence to your table. With the look of clay, amazingly it retains the smoothness and strength of porcelain.



TERO SOUP TUREENS W/ LIDS



RETBUCD27 116% oz 10 3/8" D 12
 RETBUCD23 73% oz 9 1/4" D 12

TERO HANDI BOWLS W/ LIDS



RETOPHB150 50% oz 7 7/8" D 12
 RETOPHB89 30% oz 7 7/8" D 12
 RETOPHB85 28 3/4 oz 6 1/2" D 12
 RETOPHB50 17 oz 6" D 12

TERO THALI TRAY



RETINTP31 57 1/2 oz 13" D 1 1/2" H 12

TERO THALI BOWLS



RETINTB12 9% oz 5" D 12
 RETINTB07 3 3/4 oz 3 1/8" D 12
 RETINTB06 2 1/2 oz 2 3/4" D 12

TERO MUG



RETEACU09M 3 oz 2 5/8" D 12

ARGILA SOUP TUREEN W/ LIDS



REABUCD27 116% oz 10 3/8" D 12
 REABUCD23 73% oz 9 1/4" D 12

ARGILA HANDI BOWLS W/ LIDS



REAOPHB150 50% oz 7 7/8" D 12
 REAOPHB89 30% oz 7 7/8" D 12
 REAOPHB85 28 3/4 oz 6 1/2" D 12
 REAOPHB50 17 oz 6" D 12

ARGILA THALI TRAY



REAIPTP31 57 1/2 oz 13" D 1 1/2" H 12

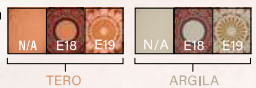
ARGILA THALI BOWLS



REAIPTB12 9% oz 5" D 12
 REAIPTB07 3 3/4 oz 3 1/8" D 12



Additional pattern information. See page 200



TERO

ARGILA

ARGILA THALI BOWL



REAINTB06 2 1/2 oz 2 3/4" D 12

ARGILA MUG



RAEACU09M 3 oz 2 3/4" D 12

HOW TO GET THE CORRECT PRODUCT REFERENCE:
Add the pattern code after the item number from the listing to get the complete product reference.

Example:
Argila Soup Tureen, 116 3/4 oz, UTSAV = **REABUCD27E18**

Item Number Pattern

STOCKED BAANTNA PATTERNS:



N/A - Prima



N/A - Epura

MADE TO ORDER BAANTNA PATTERNS



E18 - Tero UTSAV



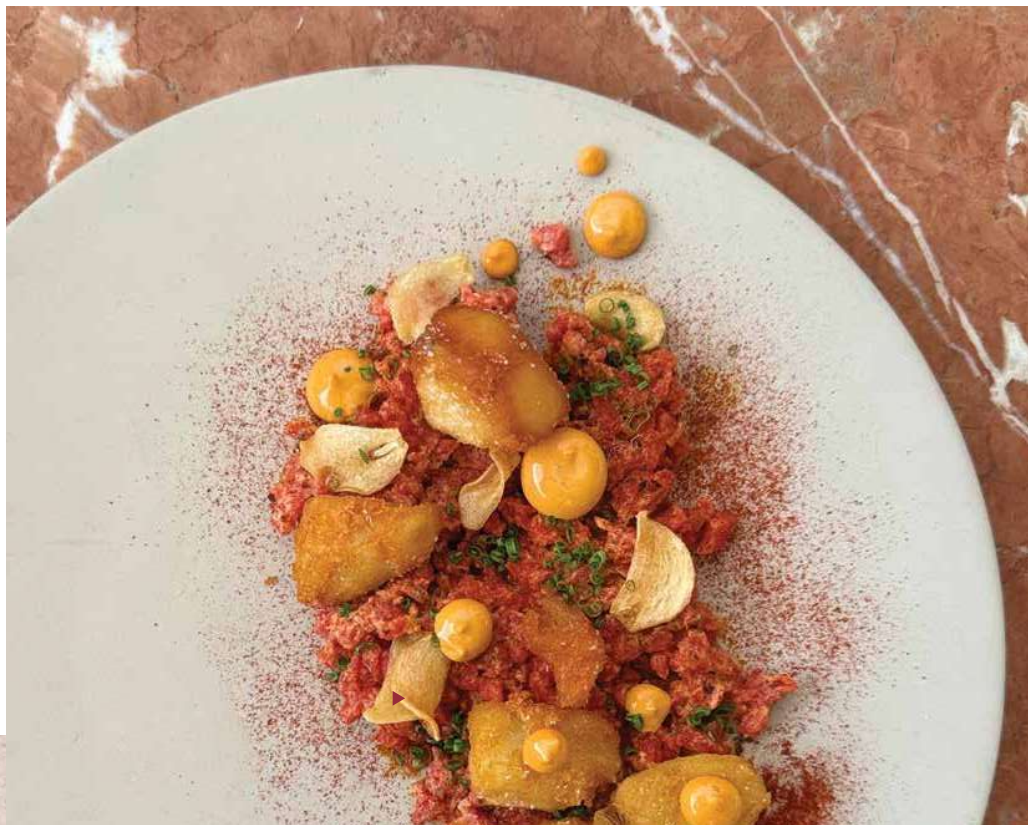
E19- Tero Rangeen



E18 - Argila Utsav



E19 - Argila Rangeen



Filete a la tartara

- Steak tartare
- Patatas bravas
- Capers
- Shallots
- Paprika aioli

■ ■ It's light. I love the earthy color and how the matte finish allows my food to shine. ■ ■

- David Viana, Executive Chef/Partner
Heirloom Kitchen, Old Bridge, N.J.

