



**Lead-Safe  
HEPA Vacuum**

**LINEVACER®**



The Linevacer® is ideal for applications when clean air in a controlled environment is critical such as cleaning medical facilities, clean rooms, computer labs, and is appropriate for lead renovation work under the EPA's RRP rule.

# LINEVACER® HEPA / ULPA

## LineVacer Specs

**Motor:** 744 watt/6.2 amp

**Airflow:** 124 CFM

**Static Lift:** 75"

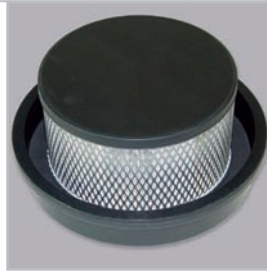
**Weight:** 13 lbs.

**Sound Level:** 64 dB

**Intercept Micro® Filter media:** 698 sq. in.

**Includes:** a 1 1/2" static-dissipating vacuum hose two Intercept Micro Filters, and either a 50' extension cord for backpack models or a 15' hard-wired power cord for cart models

\*All specs are based on motor specs.



C L E A N



E F F I C I E N T



D U R A B L E

### Warranty\*

3 year on parts, labor and motor. Lifetime on body.

\*see owner's manual for complete warranty details

## True Sealed HEPA/ULPA Filtration Model

HEPA: 99.97% efficient at filtering particulates measuring 0.3 microns and larger with 1197 sq. in. HEPA filtration area.

**Total Filter Area: 2283 sq. in.**

ULPA: 99.999+% efficient at filtering particulates measuring 0.12 microns and larger with 2146 sq. in. ULPA filtration area.

**Total Filter Area: 3232 sq. in.**

## Advantages

Offered with a True-Sealed HEPA or ULPA Four Level® Filtration system, the LineVacer provides the cleanest dirt and particle capturing system available – up to 99.999% capture rate of particles .12 micron and larger.

Utilizes mountaineering-style backpack technology to carry the vacuum comfortably and ergonomically across the hips. Backpack vacuums are proven to clean more area in less time and with less operator fatigue.

The LineVacer HEPA backpack vacuum which utilizes a certified HEPA filter as the last filtration stage meets the EPA's definition of a HEPA Vacuum under the Lead Safety Renovation, Repair and Painting Rule (EPA RRP Rule).

Whisper quiet sound suppression exhaust filter minimizes motor noise to 64 decibels (dB) – (68 dB = normal conversation).

With a 10 quart filter capacity, users are able to clean more with less down time.

Optional cart mount system offers additional versatility.

The LineVacer HEPA/ULPA has earned the Silver Seal of Approval/Green Label from the Carpet and Rug Institute (CRI), signifying the vacuum system meets higher standards for carpet cleaning effectiveness and indoor air quality.

Meets the requirements of the U.S. Green Building Council's LEED rating system for Green Cleaning – Sustainable Cleaning Equipment.



Electrical cord not shown



BACKPACKS • CANISTERS • UPRIGHTS  
HIPSTYLE • BATTERY • FILTERS

**ProTeam**  
Cleaning for Health® Since 1987

www.pro-team.com

866.888.2168

ProTeam, LineVacer, Intercept Micro, Cleaning for Health and Four Level are trademarks of ProTeam, Inc.  
©2006-2010 ProTeam, Inc. All Rights Reserved.  
ProTeam, Inc. P.O. Box 7385 Boise, Idaho 83707



The American Lung Association does not endorse products.



103491/6-10