

TELE-PRO® DAVIT CRANE

Individually tested and certified at 125% W.L.L

OZTP500DAV, OZTP1200DAV, OZTP2500DAV

[PATENTED]



**500 lbs., 1200 lbs.
and 2500 lbs. Capacity**

Features

- Telescoping boom adjustment while under load
- Ratchet screw jack adjusts boom under load
- 360 degree rotation of crane on sleeve bearing
- DIN-Rated hand winch equipped standard with a load holding weatherproof Weston brake
- Quick connect winch handle with power drill adapter included
- Smart Latch technology at boom/mast connection
- Corrosion resistant zinc plated finish
- Headache Ball (OZHB10) available and sold separately
- Carrying case (OZRB1) available and sold separately (excludes TP2500)

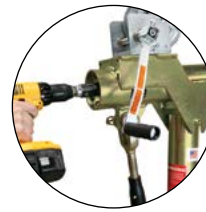
Weight (excludes winch weight)

Weight	Boom	Mast	Net
OZTP500DAV (lbs)	88	23	111
OZTP1200DAV (lbs)	102	36	138
OZTP2500DAV (lbs)	288	62	350

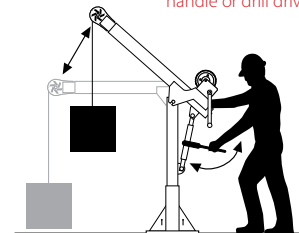
OZTP1200DAV shown with optional
OZPED1-TP pedestal base and
OZGAL.19-40B wire rope assembly
Bases and cable assemblies sold separately

CABLE ASSEMBLIES (sold separately)

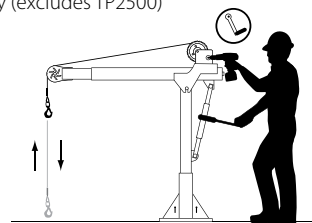
All cable assemblies come with swaged ball and swivel hook with latch. Custom cable length available.



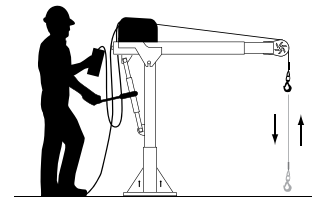
Telescoping boom can be adjusted using the winch handle or drill drive adapter



Ratchet screw jack adjusts boom under load



Detach winch handle for drill option



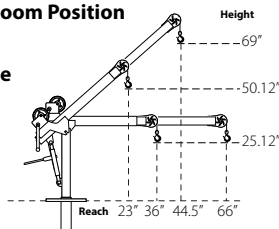
AC and DC power winches available
See page 25

Manual winch: 3/16" - 80 ft max. lift length • 1/4" - 55ft max. lift length
AC/DC Electric Winch: 3/16" - 90 ft max. lift length • 1/4" - 45ft max. lift length
See wire rope assembly page 34

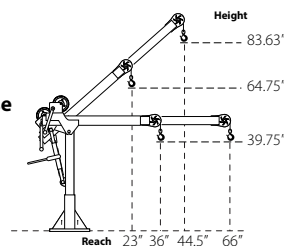
OZTP500DAV DIMENSIONS

Horizontal and 45° Boom Position

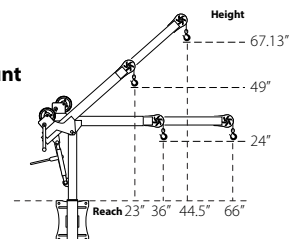
w/ Socket Base



w/ Pedestal Base

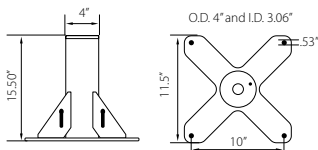


w/ Wall Mount

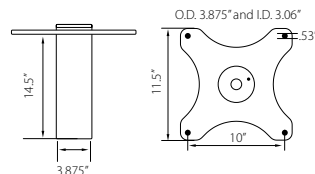


OZTP500DAV BASES (sold separately) Comes with mounting template.

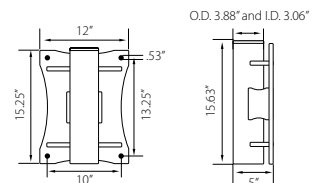
OZPED2-TP



OZSOC2-TP



OZWALL2-TP



OZTP500DAV LOAD RATINGS – Horizontal Boom Angle

– Based on 3/16 inch wire or Urtrex synthetic rope

Load Ratings (lbs.)	1st. Layer	Mid Drum	Full Drum
Boom Position 1 at 36"	500 lbs.	500 lbs.	500 lbs.
Boom Position 2 at 46"	430 lbs.	430 lbs.	430 lbs.
Boom Position 3 at 56"	350 lbs.	350 lbs.	350 lbs.
Boom Position 4 at 66"	300 lbs.	300 lbs.	300 lbs.

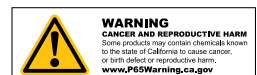
OZTP500DAV LOAD RATINGS – 45° Boom Angle

– Based on 3/16 inch wire or Urtrex synthetic rope

Load Ratings (lbs.)	1st. Layer	Mid Drum	Full Drum
Boom Position 1 at 23"	500 lbs.	500 lbs.	500 lbs.
Boom Position 2 at 30"	500 lbs.	500 lbs.	500 lbs.
Boom Position 3 at 37"	500 lbs.	500 lbs.	500 lbs.
Boom Position 4 at 44"	450 lbs.	450 lbs.	450 lbs.

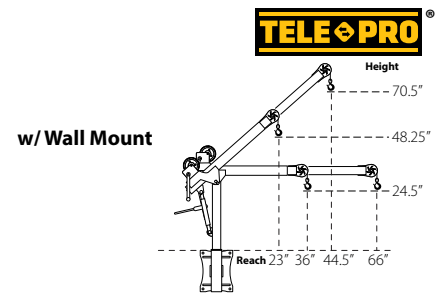
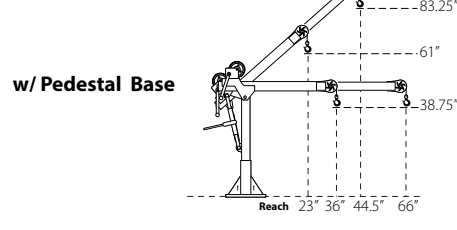
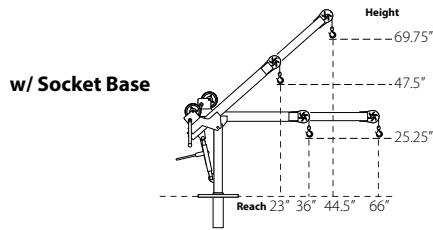
Load Rating are based on a manual winch. Load ratings will vary depending on wire or synthetic rope length and diameter.

Dimensions and illustrations are for reference only and subject to change without notice.

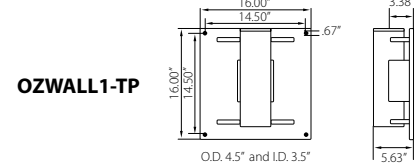
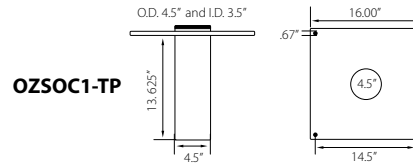
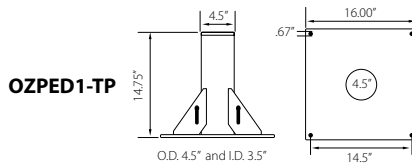


OZTP1200DAV DIMENSIONS

Horizontal and 45° Boom Position



OZTP1200DAV BASES (sold separately) Comes with mounting template.



OZTP1200DAV LOAD RATINGS – Horizontal Boom Angle

– Based on 3/16 inch wire or Ultrex synthetic rope

Load Ratings (lbs.)	1st. Layer	Mid Drum	Full Drum
Boom Position 1 at 36"	800 lbs.	800 lbs.	550 lbs.
Boom Position 2 at 46"	800 lbs.	800 lbs.	550 lbs.
Boom Position 3 at 56"	750 lbs.	750 lbs.	550 lbs.
Boom Position 4 at 66"	650 lbs.	650 lbs.	550 lbs.

OZTP1200DAV LOAD RATINGS – Horizontal Boom Angle

– Based on 1/4 inch wire or 3/16 inch Ultrex synthetic rope

Load Ratings (lbs.)	1st. Layer	Mid Drum	Full Drum
Boom Position 1 at 36"	1200 lbs.	875 lbs.	550 lbs.
Boom Position 2 at 46"	900 lbs.	875 lbs.	550 lbs.
Boom Position 3 at 56"	750 lbs.	750 lbs.	550 lbs.
Boom Position 4 at 66"	650 lbs.	650 lbs.	550 lbs.

OZTP1200DAV LOAD RATINGS – 45° Boom Angle

– Based on 3/16 inch wire/Ultrex synthetic rope

Load Ratings (lbs.)	1st. Layer	Mid Drum	Full Drum
Boom Position 1 at 23"	800 lbs.	800 lbs.	550 lbs.
Boom Position 2 at 30.25"	800 lbs.	800 lbs.	550 lbs.
Boom Position 3 at 37.25"	800 lbs.	800 lbs.	550 lbs.
Boom Position 4 at 44.5"	800 lbs.	800 lbs.	550 lbs.

OZTP1200DAV LOAD RATINGS – 45° Boom Angle

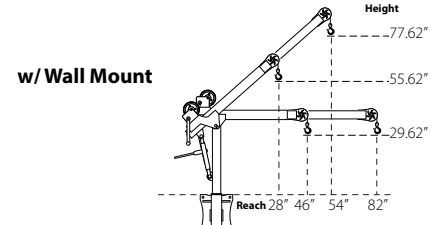
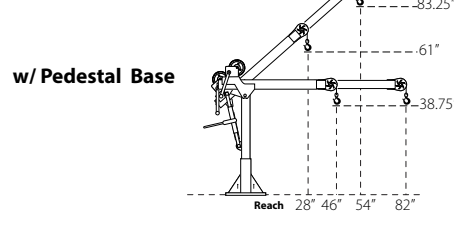
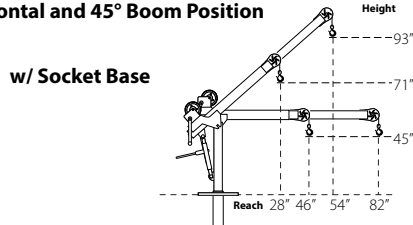
– Based on 1/4 inch wire or 3/16 inch Ultrex synthetic rope

Load Ratings (lbs.)	1st. Layer	Mid Drum	Full Drum
Boom Position 1 at 23"	1200 lbs.	875 lbs.	550 lbs.
Boom Position 2 at 30.25"	1200 lbs.	875 lbs.	550 lbs.
Boom Position 3 at 37.25"	1100 lbs.	875 lbs.	550 lbs.
Boom Position 4 at 44.5"	950 lbs.	875 lbs.	550 lbs.

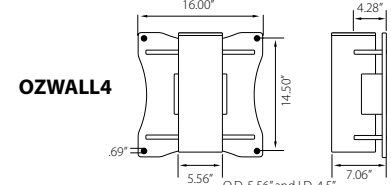
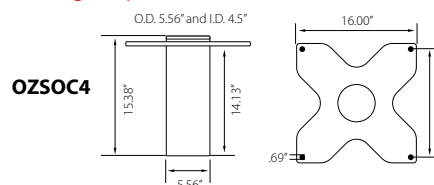
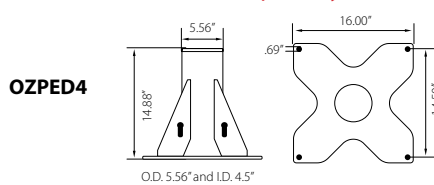
Load Rating are based on a manual winch • See page 25 for electric winch load ratings.

OZTP2500DAV DIMENSIONS

Horizontal and 45° Boom Position



OZTP2500DAV BASES (sold separately) Comes with mounting template.



OZTP2500DAV LOAD RATINGS – Horizontal Boom Angle

– Based on 1/4 inch Ultrex synthetic rope

Load Ratings (lbs.)	1st. Layer	Mid Drum	Full Drum
Boom Position 1 at 46"	2000 lbs.	2000 lbs.	1550 lbs.
Boom Position 2 at 58"	1900 lbs.	1900 lbs.	1550 lbs.
Boom Position 3 at 70"	1600 lbs.	1600 lbs.	1550 lbs.
Boom Position 4 at 82"	1300 lbs.	1300 lbs.	1300 lbs.

OZTP2500DAV LOAD RATINGS – Horizontal Boom Angle

– Based on 3/8 inch wire/synthetic rope or 5/16 inch Ultrex synthetic rope

Load Ratings (lbs.)	1st. Layer	Mid Drum	Full Drum
Boom Position 1 at 46"	2500 lbs.	2015 lbs.	1550 lbs.
Boom Position 2 at 58"	1900 lbs.	1900 lbs.	1550 lbs.
Boom Position 3 at 70"	1600 lbs.	1600 lbs.	1550 lbs.
Boom Position 4 at 82"	1300 lbs.	1300 lbs.	1300 lbs.

OZTP2500DAV LOAD RATINGS – 45° Boom Angle

– Based on 1/4 inch Ultrex synthetic rope

Load Ratings (lbs.)	1st. Layer	Mid Drum	Full Drum
Boom Position 1 at 28"	2000 lbs.	2000 lbs.	1550 lbs.
Boom Position 2 at 37"	2000 lbs.	2000 lbs.	1550 lbs.
Boom Position 3 at 45.5"	2000 lbs.	2000 lbs.	1550 lbs.
Boom Position 4 at 54"	2000 lbs.	2000 lbs.	1550 lbs.

OZTP2500DAV LOAD RATINGS – 45° Boom Angle

– Based on 3/8 inch wire/synthetic rope or 5/16 inch Ultrex synthetic rope

Load Ratings (lbs.)	1st. Layer	Mid Drum	Full Drum
Boom Position 1 at 28"	2500 lbs.	2015 lbs.	1550 lbs.
Boom Position 2 at 37"	2500 lbs.	2015 lbs.	1550 lbs.
Boom Position 3 at 45.5"	2500 lbs.	2015 lbs.	1550 lbs.
Boom Position 4 at 54"	2000 lbs.	2000 lbs.	1550 lbs.

Load Rating are based on a manual winch • Load ratings will vary depending on wire or synthetic rope length and diameter.
Dimensions and illustrations are for reference only and subject to change without notice.