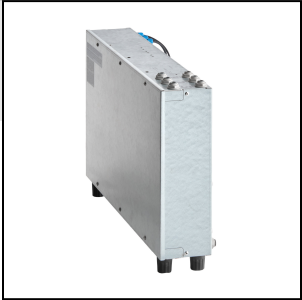




Narvon Auto-Fill Unit for Summit Triple 3.2 Gallon Granita Slushy / Frozen Beverage Machine - 115-240V

#378NSAF3



Technical Data

Width	4 1/2 Inches
Depth	25 1/2 Inches
Height	15 1/2 Inches
Hertz	50/60 Hz
Voltage	115 - 240 Volts
Display Type	Digital
Included	Tubes
Plug Type	NEMA 5-15P
Style	Triple

Features

- Automatically refills syrup and water for consistent beverage levels
- Digital controls allow for easy adjustment of syrup-to-water ratio
- Compact design easily fits tight spaces
- Low-syrup alert for uninterrupted service
- Compatible with Narvon Summit triple 3.2 gallon granita / slushy / frozen beverage machine

Certifications



3/8" Water Connection



Imported from Spain



5-15P



UL Certified


Technical Data

Type	Add-On Accessories
Water Inlet Size	3/8 Inches
Water Pressure Range	22 - 145 PSI

Notes & Details

Maximize the output of your slushy machine with this Narvon auto-fill unit for Summit triple 3.2 gallon granita / slushy / frozen beverage machine! This unit boosts the efficiency of your frozen beverage machine by automatically refilling the water and syrup when contents run low, reducing time spent freezing your product. The digital controls make adjusting the syrup-to-water ratio a breeze, helping you achieve a perfect mix every time. Offering seamless integration, this unit is compatible with the Narvon Summit triple 3.2 gallon granita / slushy / frozen beverage machine.

Perfect for high-volume operations, this auto-fill unit allows you to focus on serving customers instead of constantly monitoring your frozen beverage machine. The compact design makes it easy to fit into tight spaces, perfect for space-limited areas. Additionally, the low-syrup alert helps make sure that you don't run out of syrup, allowing you to provide uninterrupted service during peak hours. Tubes are included to easily connect this unit to your water supply and to single-use syrup containers or bags (sold separately). A 3/8" water connection and 115-240V electrical connection are required for operation.

 **WARNING:** This product can expose you to chemicals including lead, which are known to the State of California to cause cancer and birth defects or other reproductive harm. For more information, go to www.p65warnings.ca.gov.