

PULLTAP'S® TWO STEP WAITER'S CORKSCREWS



5105

Burgundy
03

Black
01

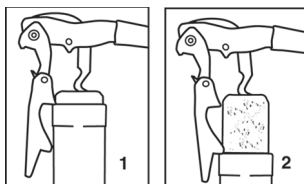
Made In
Spain

5105 Pulltap's® Classic Corkscrew, Made in Spain

One-piece, zinc alloy molded handle. Non-stick spiral. Knife blade, cap lifter. Colors: Burgundy or Black. 4-3/4" long. Pkg. Code*: BXR.

Imprint area: 1-3/4" X 5/16". Screen/Pad Print or Laser across top of handle.

Hinged Double-Lever System



5112

5112 Pulltap's® Toledo Corkscrew - Made in Spain

Unique hinged double-lever system. Hardwood inlaid handle. High-polished nickel plate, curved blade. Non-stick spiral. 4-3/4" long. Pkg. Code*: BX. Imprint area on metal side: 1/2" X 3/16". Laser.



5151

Bronze
64

Graphite
63

Chrome
59

Gold
68

5151 Pulltap's® Premium Classic Corkscrew, Made in Spain

Contoured alloy molded handle. Non-stick spiral. Colors: Bronze, Graphite, Chrome, and Gold. 4-5/8" long. Pkg. Code*: BXR.

Imprint area: 1-3/4" X 5/16" across top of handle. Screen/Pad Print or Laser. NOTE: 5151 replaces the 5150 series.



New

5106

Sliding Blade

5106 Pulltap's® Slider Corkscrew

The new Pulltap's® corkscrew with a sliding blade is designed to be used with one hand. All the other benefits and measurements of the original 5100 Pulltap's® are unchanged. 4-5/8" long. Pkg. Code*: BX.

Imprint area: 1-3/4" X 5/16" across top of handle. Screen/Pad Print or Laser.

ColorBlast Imprint area 1-3/4" X 5/16".

*Specialty Packaging for Waiter's Corkscrews - See pages 40-42.