



We put space to work.

Item # _____

Job _____

Metro® Mightylite™ Insulated Top-Load Food Carriers

Attractive, ultra light, and durable insulated top-load food carriers for transporting and delivering hot and cold food pans, containers, plated meals, or virtually anything else.

- **Durable:** advanced polymer foam construction with high strength-to-weight ratio withstands impact without damage, making it perfect for lifting and withstanding the rigors of off-site food transport!
- **Ultra-light:** 80% lighter than traditional polymer molded, urethane foam filled carriers and 60% lighter than coolers. ML180 only weighs 3.8 lbs. (1.7kg) and ML180XL 4.6 lbs. (2.1kg)
- **Ergonomic:** ultra light with 4 convenient handles, facilitates lifting, carrying, and moving in any situation. Grab the optional carrying strap for one-handed or two-person carrying.
- **Keeps food safe for 5+ hours!** Transport hot or cold food at safe, appetizing temperatures with confidence.
- **Snap seal lid:** Flexible, integrated seal snaps shut to help retain temperature. Never worry about replacing or cleaning hinges, latches, or gaskets again!
- **Label holder:** two convenient pockets accept a 5.5" x 4.25" (140 x 108mm) folded piece of paper to make identifying carrier contents and destination easier.
- **Stackable:** carriers are designed to interlock with each other, MightyLite front-load carriers, and optional dolly for more efficient transportation and storage.
- **Generous hand recesses:** for easy loading and unloading of food pans. Also increases storage area to fit more containers.
- **Recyclable:** 100% recyclable, CFC free.
- **BigBoy lid:** ML180XL with innovative BigBoy multi-functional lid provides 63% more storage, clearance to store taller items, and doubles as a server.



(2) ML180 & (2) ML180XL
stacked on optional dolly

Stacks
well with
others.



ML180



ML180XL

The multi-purpose
carrier with
63% more
storage.



TOP-LOADER



COOLER



SERVER

All Metro Catalog Sheets are available on our website: www.metro.com



InterMetro Industries Corporation
North Washington Street, Wilkes-Barre, PA 18705
Product Information. U.S. and Canada: 1.800.992.1776
Outside U.S. and Canada: www.metro.com/contactus

L02-208
Printed in U.S.A. 4/18

Information and specifications are subject to
change without notice. Please confirm at time of order.

Copyright © 2018 InterMetro Industries Corp.



Metro® Mightylite™ Insulated Top-Load Food Carriers

13-61

Job _____



We put space to work.®

Metro® Mightylite™ Insulated Top-Load Food Carriers

Specifications

- **Carrier Construction:** Lightweight, thermally insulated, impact absorbing, eco-friendly engineered plastic foam body and lid made of expanded polypropylene (EPP). 1.5" (38mm) thick walls.

Accessories

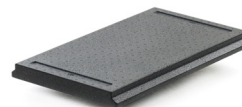
- **Dolly:** Heavy-duty high density polyethylene (HDPE) construction fastened to 0.100" (2.5mm) thick aluminum caster channels with rugged $\frac{5}{16}$ " (8mm) stainless steel tie down anchors. Plate mounted casters, 2 swivel and 2 swivel with brakes. 5" (127mm) diameter donut neoprene wheels. Load capacity 350 lbs. (158kg) per dolly. Includes 1" (25mm) x 15' (457 cm) long cam buckle strap with hooks. Dolly is designed to transport carriers but can be used for milk crates as well.
- **Carrying strap:** Heavy-duty adjustable strap, designed to work with top-load and front-load carriers. Detachable handles can be quickly re-configured for one-handed or two-person carrying. 1" (25mm) wide, high-strength polyester webbing with low water absorption properties. Box sewn stitch pattern with durable polymer / metal hardware.
- **Thermal Partition:** 1.5" (38mm) thick insulated partition helps avoid accelerated food temperature loss or gain inside partially full carriers by minimizing empty space inside the carrier. Also use to separate hot and cold food in one carrier.



MLD1 Dolly (includes strap)



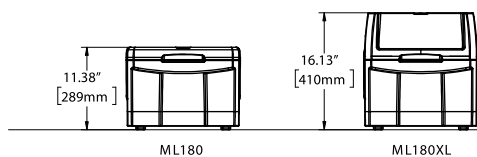
MLS1 Carrying Strap

**Dolly designed to hold milk crates.**

MLP1 Thermal Partition

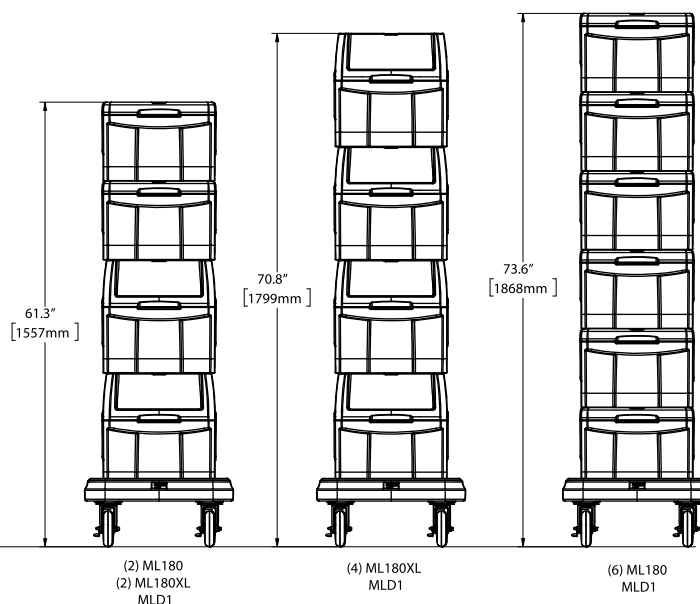
CARRIERS STACKED ON DOLLY ARE
20.63" (524mm) WIDE AND 29.75" (756mm) DEEP

CARRIERS ARE 15.75" (400mm) WIDE AND 26.63" (677mm) DEEP



ML180

ML180XL

(2) ML180
(2) ML180XL
MLD1(4) ML180XL
MLD1(6) ML180
MLD1

	Inside Dimensions (W x D x H)		12" x 20" – GN 1/1 Pan Capacity				Food Capacity (approx.)	Inside Capacity (approx.)	Covered Plates*	Container Sizes**								Shipping	
	(in)	(mm)	2.5"	4"	6"	8"				Cans 12oz.	Cans 16oz.	Bottles 12oz.	Bottles 750ml	Bottles 2L	Half Gallon	Gallon	Pkd. Wt.	Volume	
			65mm	100mm	150mm	200mm													
ML180	21.0 x 12.9 x 8.1	533 x 327 x 205	3	2	1	1	30 qts (28.4 L)	38 qts (36.0 L)	6	40	40	36	14	8	10	4	5.8 lbs. (2.6kg)	2.8ft³ (.26m³)	
ML180XL	21.0 x 12.9 x 13.2	533 x 327 x 335	5	3	2	1	45 qts (42.4 L)	62 qts (58.7 L)	8	80	56	43	24	14	15	6	7.4 lbs. (3.4kg)	4.0ft³ (.37m³)	

*10.5" cover diameter and 2.75" covered plate height

**Container capacity may vary depending on individual container size.

an Ali Group Company



The Spirit of Excellence