

## Stem Casters MetroMax®

Metro Stem-Type Casters are designed to fit MetroMax posts to form shelf carts and other mobile units. Bumpers are included.

### Plated Casters with High Modulus treads

- Non marking high modulus donut tread and polyolefin hub. Plated horns, stems, axles, and brakes (optional) are appropriate for dry environments and for medium duty applications. Ball bearing swivel and axle. NSF listed. Bumpers included. Brake style: pedal brake.
- TPR tread (70 shore): Quieter than polyurethane and resilient rubber caster options.

Wheel Diameter (in.) (mm)	Face (in.) (mm)	Load Rating (lbs.) (kg.)	Type	Wheel Tread	Temperature range (Continuous usage)		Apprx. Pkd. Wt. (lbs.) (kg.)	MetroMax Cat. No.
					(Fahrenheit)	(Celsius)		
5 127	1.25 32	250 113	Stem/Swivel	High Modulus Donut	-20° - 180°	-29° - 82°	2.2 1.0	<b>5MDXA</b>
5 127	1.25 32	250 113	Stem/Brake	High Modulus Donut	-20° - 180°	-29° - 82°	2.4 1.1	<b>5MDBXA</b>
5 127	1.25 32	250 113	Stem/Rigid	High Modulus Donut	-20° - 180°	-29° - 82°	2.2 1.0	<b>5MDXRA</b>

Note: Rigid connecting channel (stainless steel): Cat. No. 14RS, 18RS, 21RS, 24RS.



**5MDXA**



**5MDBXA**



**5MDXRA**

#### For all rigid casters.

Rigid stem casters improve tracking and handling of mobile units over long distances. Rigid caster channels are selected at the time of order.

#### How to Order:

Order (2) Rigid Casters

Select Rigid Channel based on the depth of the shelving. (Provided at no charge)

**Bumpers are included with each caster.**



### Plated Casters with Polyurethane Tread

- Chrome plated horns, stems, axles, and brakes (optional) are appropriate for dry environments and for medium duty applications. Non marking polyurethane flat tread and polyethylene hub. Ball bearing swivel and axle. NSF listed. Bumpers included. Brake style: side brake.

Wheel Diameter (in.) (mm)	Face (in.) (mm)	Load Rating (lbs.) (kg.)	Type	Wheel Tread	Temperature range (Continuous usage)		Apprx. Pkd. Wt. (lbs.) (kg.)	Cat. No.
					(Fahrenheit)	(Celsius)		
5 127	1.25 32	300 135	Stem/Swivel	Polyurethane, Flat	-20° - 180°	-29° - 82°	2.5 1.1	<b>5MPX</b>
5 127	1.25 32	300 135	Stem/Brake	Polyurethane, Flat	-20° - 180°	-29° - 82°	2.7 1.2	<b>5MPBX</b>
5 127	1.25 32	300 135	Stem/Rigid	Polyurethane, Flat	-20° - 180°	-29° - 82°	2.4 1.1	<b>5MPRX</b>

Note: Rigid connecting channel (stainless steel): Cat. No. 14RS, 18RS, 21RS, 24RS.



**5MPX**



**5MPBX**



**5MPRX**

All Metro Catalog Sheets are available on our website: [metro.com](https://metro.com)

Plated Casters with resilient rubber treads

- Solid resilient rubber material. Plated horns, stems, axles, and brakes (optional) are appropriate for dry environments and for medium duty applications. Ball bearing swivel. NSF listed. Bumpers included. Brake style: side brake.

Wheel Diameter		Face		Load Rating		Type	Wheel Tread	Temperature range (Continuous usage)		Apprx. Pkd. Wt.		Cat. No.
(in.)	(mm)	(in.)	(mm)	(lbs.)	(kg.)			(Fahrenheit)	(Celsius)	(lbs.)	(kg.)	
5	127	1-1/4	32	200	90	Stem/Swivel	Resilient, Flat	-20° - 160°	-29° - 71°	2.9	1.3	<b>5MX</b>
5	127	1-1/4	32	200	90	Stem/Brake	Resilient, Flat	-20° - 160°	-29° - 71°	3.1	1.4	<b>5MBX</b>
5	127	1-1/4	32	200	90	Stem/Rigid	Resilient, Flat	-20° - 160°	-29° - 71°	2.9	1.3	<b>5MRX</b>

Note: Rigid connecting channel (stainless steel): Cat. No. 14RS, 18RS, 21RS, 24RS.



5MX



5MBX



5MRX

Bumpers are included  
with each caster.



## Polymer & Stainless Total-Guard Caster

- High rust protection: Reinforced nylon rig with Stainless Steel stem and hardware.
- Maintenance Free: Sealed swivel SS ball bearings and Delrin axle bearings.
- Swivel and Total Lock Brake options.
- Pedal brake locks the wheel and the swivel motion. More control than conventional stem casters with wheel brakes only.
- Non-marking Thermoplastic Elastomer [TPE] tread (70 shore) is quieter and more shock absorbent than a TPU tread.



Outer rig consists of rust proof polymers, reinforced nylon, TPE wheel, and Polypropylene wheel hub.

Wheel Diameter		Face		Load Rating		Type	Wheel Tread	Temperature range (continuous)		Apprx. Pkd. Wt.		Model No.
(in.)	(mm)	(in.)	(mm)	(lbs.)	(kg)			(Fahrenheit)	(Celsius)	(lbs.)	(kg)	
5	127	1.25	32	250	113	Stem/Swivel	TPE, Flat	-20° - 120°	-29° - 49°	1.8	0.8	<b>5PSTEX</b>
5	127	1.25	32	250	113	Stem/Brake	TPE, Flat	-20° - 120°	-29° - 49°	2.0	0.9	<b>5PSTEBX</b>

### Best uses...

- Best suited for use with MetroMax and Metroseal shelving
- Best tread for high humidity controlled environments
- Excellent Corrosion Resistance
- Excellent Chemical Resistance
- Best option for aquatic facilities (environments with high salt exposure)
- Low magnetism: Best option for MRI and RFID applications
- A good option for cart wash chamber cleaning processes.

### Where not to use...

- Tread not suited for exposure to acids or petroleum based chemicals.



**5PSTEX**  
Swivel

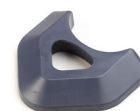


**5PSTEBX**  
Total Lock

## Standard Polymer Casters

- Basic corrosion protection: Reinforced nylon rig with chromate plated stem and swivel raceway
- Maintenance Free: Sealed swivel ball bearings and Delrin axle bearings
- Swivel, Total-Lock Brake, and Rigid options
- Pedal brake locks the wheel AND swivel motion
- Non-marking polyurethane (TPU) tread
- Optional Models with built-in antimicrobial TPU tread

Bumpers are included with each caster.



Wheel Diameter		Face		Load Rating		Type	Wheel Tread	Temperature range (continuous)		Apprx. Pkd. Wt.		MetroMax Model No.
(in.)	(mm)	(in.)	(mm)	(lbs.)	(kg)			(Fahrenheit)	(Celsius)	(lbs.)	(kg)	
5	127	1.25	32	300	135	Stem/Swivel	Polyurethane, Flat	-20° - 120°	-29° - 49°	2.1	1.0	<b>5PCX</b>
5	127	1.25	32	300	135	Stem/Brake	Polyurethane, Flat	-20° - 120°	-29° - 49°	2.3	1.0	<b>5PCBX</b>
5	127	1.25	32	300	135	Stem/Rigid	Polyurethane, Flat	-20° - 120°	-29° - 49°	2.1	1.0	<b>5PCRX</b>
5	127	1.25	32	300	135	Stem/Swivel	Polyurethane, Flat	-20° - 120°	-29° - 49°	2.0	0.9	<b>5PCXM</b>
5	127	1.25	32	300	135	Stem/Brake	Polyurethane, Flat	-20° - 120°	-29° - 49°	2.2	1.0	<b>5PCBXM</b>

Tread with built-in antimicrobial.

Note: Rigid connecting channel (aluminum): Cat. No. P14RC, P18RC, P21RC, P24RC.

### Best uses...

- Basic Corrosion Protection versus common industrial casters
- Good Chemical Resistance

### Where not to use...

- Not suited for areas with spray sterilization processes on regular basis
- Not suited for high humidity controlled environments
- Not suited for high temperature cart wash chambers



**5PCX**  
Swivel



**5PCBX**  
Swivel & Brake



**5PCXM**  
Antimicrobial  
Tread Swivel



**5PCBXM**  
Antimicrobial Tread  
Swivel Brake

## Premium Type 304 Stainless Steel Casters

- Type 304 Stainless Steel Rig, Hardware and SS bearings.
- Non-marking Treads
- Swivel, Brake, and Rigid Options
- Pedal brake locks the wheel

Bumpers are included  
with each caster.



### Polyurethane (TPU) Tread Models

Wheel Diameter (in.)	(mm)	Face		Load Rating		Type	Wheel Tread	Temperature range (continuous)		Apprx. Pkd. Wt.		MetroMax Model No.
		(in.)	(mm)	(lbs.)	(kg)			(Fahrenheit)	(Celsius)	(lbs.)	(kg)	
5	127	1.25	32	300	135	Stem/Swivel	Polyurethane, Flat	-20° - 180°	-29° - 82°	2.3	1.0	<b>5MPXGSA</b>
5	127	1.25	32	300	135	Stem/Brake	Polyurethane, Flat	-20° - 180°	-29° - 82°	2.5	1.1	<b>5MPBGSA</b>
5	127	1.25	32	300	135	Stem/Rigid	Polyurethane, Flat	-20° - 180°	-29° - 82°	2.3	1.0	<b>5MPRXGSA</b>

Note: Rigid connecting channel (stainless steel): Cat. No. 14RS, 18RS, 21RS, 24RS.



**5MPXGSA**



**5MPBGSA**



**5MPRXGSA**

#### Best uses...

- Best suited for high temperature cart wash chambers up to 180F (82C) when paired with Stainless Steel Shelving.
- Moving heavy loads regularly (90 shore TPU tread)
- High impact mobile uses (elevators, thresholds, ramps)
- Excellent Corrosion Resistance
- Excellent Chemical Resistance

### Thermoplastic Rubber (TPR) Tread Models

Wheel Diameter (in.)	(mm)	Face		Load Rating		Type	Wheel Tread	Temperature range (continuous)		Apprx. Pkd. Wt.		MetroMax Model No.
		(in.)	(mm)	(lbs.)	(kg)			(Fahrenheit)	(Celsius)	(lbs.)	(kg)	
5	127	1.25	32	250	113	Stem/Swivel	TPR donut	-20° - 180°	-29° - 82°	2.4	1.1	<b>5MDGSXA</b>
5	127	1.25	32	250	113	Stem/Brake	TPR donut	-20° - 180°	-29° - 82°	2.6	1.2	<b>5MDBGSXA</b>
5	127	1.25	32	250	113	Stem/Rigid	TPR donut	-20° - 180°	-29° - 82°	2.4	1.1	<b>5MDRGSXA</b>

Note: Rigid connecting channel (stainless steel): Cat. No. 14RS, 18RS, 21RS, 24RS.



**5MDGSXA**



**5MDBGSXA**



**5MDRGSXA**

#### Best uses...

- Best tread for high humidity controlled environments
- Excellent Corrosion Resistance
- Excellent Chemical Resistance
- Softer TPR donut tread (70 shore) is more shock absorbent than TPU

#### Where not to use...

- Tread not suited for exposure to acids or petroleum based chemicals.

### Maintenance - Stainless Casters

- TPU tread swivel and swivel/brake models: Swivel raceway has a grease fitting. The axle has sealed bearings that do not require additional lubrication.
- TPR tread swivel and swivel/brake models: swivel raceway and axles have grease fittings. Rigid caster model has an axle with a grease fitting.
- User should determine the frequency of maintenance based on their usage conditions.

## Stem Casters MetroMax®

- **Swivel and Swivel/Brake casters** rotate a full 360 degrees for easy maneuvering.
- **Brakes:** Wheel brakes are foot operated.
- **Bumpers:** Non Phthalate vinyl material is strong yet flexible to protect walls from damage. Each caster, except where noted, includes a 3-1/2" (89mm) diameter bumper. Optional 5" (127mm) diameter bumpers are available.
- **Weight Load Capacity** of a cart (evenly distributed): Caster Load Rating x 3.

### Caster Wheel Material Guide

Caster Tread	Grease/Oil Resistance	Floor Protection	Load Rating	Key Advantage
Resilient Rubber	Low	High	200 lbs. (90kg)	Basic mobility.
High Modulus Rubber	High	High	250 lbs. (113kg)	Quieter than resilient rubber and polyurethane. Well suited for environments with constant exposure to moisture and/or high humidity.
Polyurethane	High	High	300 lbs. (135kg)	Easiest to move heavy loads.

### Replacement Bumpers

Non Phthalate Vinyl

Height (in.)	Height (mm)	MetroMax Cat. No.
.84	22	M9992DBX



### Rigid Caster Channels

- Typically used opposite two swivel style casters to create carts that are easy to steer over long distances.
- Note: A type 304 stainless rigid caster channel is included at no charge with each two rigid plated or SS casters. An aluminum rigid channel is included with each two polymer horn rigid casters (model 5PCR).

For shelf depth (in.)	For shelf depth (mm)	Cat. No.	(For use with 5PCR) Cat. No.
14"	355	14RS	P14RC
18"	457	18RS	P18RC
21"	530	21RS	P21RC
24"	610	24RS	P24RC



24RS



P24RC