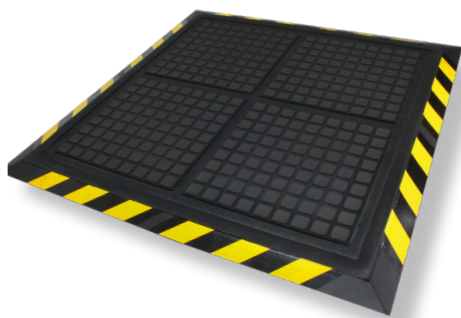


Hog Heaven III® Comfort Mats & Tiles

Anti-Fatigue Mats • Indoor

Hog Heaven III Comfort mats and tiles offer outstanding anti-fatigue qualities and perform in various environments including those with oil, grease, and chemicals. Available in modular tiles, linkable mats, and workstation mats for any configuration.



Hog Heaven III Comfort Workstation Mat

- **Comfortable** – High-density, closed-cell nitrile rubber cushion provides excellent anti-fatigue qualities to reduce the pain and fatigue associated with standing for long periods of time
- **Safe** – Beveled edges provide a safe transition from floor to mat and will not crack or curl
- **Durable** – Nitrile-blended cushion provides years of useful life and is molded, not glued, to the nitrile rubber surface so it will not separate
- **Versatile** – Welding safe; grease/oil resistant*; chemical resistant; ESD rating of electrically conductive
- Mats and tiles are 3/4" thick and available with black or OSHA-approved yellow striped border
- Linkable mats can be linked together to create long runs, tiles can be linked to create custom configurations, and workstation mats are ideal for standing areas

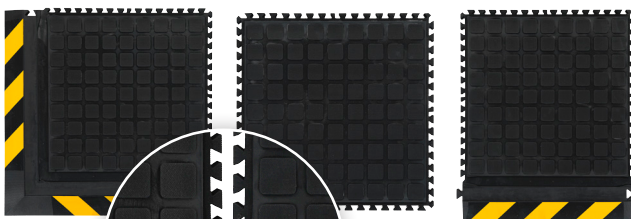
*The 100% nitrile rubber surface of Hog Heaven III Comfort is grease/oil proof while the nitrile-blended cushion is grease/oil resistant.

Hog Heaven III Comfort Modular Tiles

Corner Tile

Center Tile

Side Tile



Locking Mechanism

Hog Heaven III Comfort Linkable Mats and Modular Tiles feature a unique locking mechanism to ensure the mats remain tightly connected

Hog Heaven III Comfort Linkable Mats

Mat End

Mat Middle

Mat End



Hog Heaven II® Comfort Mats & Tiles

Anti-Fatigue Mats • Indoor



Hog Heaven III Comfort Modular Tiles

Product No. 4471 (18" Modular Tiles)

Available with a black or striped border

Tile	Size (in.)	Shipping Weight
Center Tile	18" x 18" x 3/4"	4 lbs.
Side Tile	18" x 21.875" x 3/4"	5 lbs.
Corner Tile	21.875" x 21.875" x 3/4"	6 lbs.

Product No. 4472 (36" Modular Tiles)

Available with a black or striped border

Tile	Size (in.)	Shipping Weight
Center Tile	36" x 36" x 3/4"	13 lbs.
Side Tile	36" x 36.875" x 3/4"	17 lbs.
Corner Tile	39.875" x 39.875" x 3/4"	19 lbs.

Product No. 4497 (Linkable Mats - black border)

Product No. 4498 (Linkable Mats - yellow border)

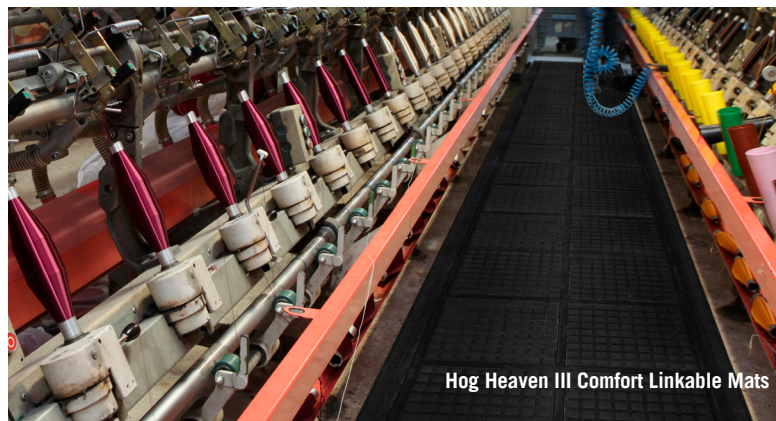
	Size (in.)	Shipping Weight
Mat End	39.875" x 43.75"	21 lbs.
Mat Middle	36" x 43.75"	19 lbs.

Product No. 4493 (Workstation Mats - black border)

Product No. 4494 (Workstation Mats - yellow border)

Size (in.)	Shipping Weight
43.75" x 43.75"	30 lbs.

Note: Mat sizes are approximate as rubber shrinks and expands in conjunction with temperature and time. Tolerable manufacturing size variance is 3-5%.



Hog Heaven III Comfort Linkable Mats



Hog Heaven III Comfort Workstation Mats



M + A MATTING

800.241.5549

www.mamattting.com