

PRODUCT SPECIFICATIONS

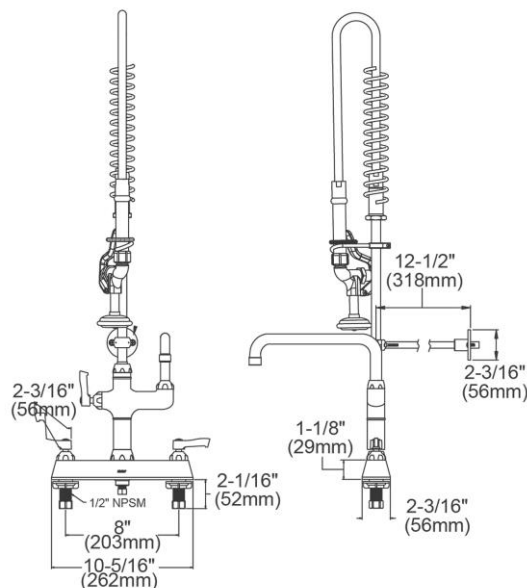
Elkay 8" Centerset Exposed Deck Mount Faucet 44in Flexible Hose with 1.2 GPM Spray Head + 12" Arc Tube Spout 2" Lever Handles. Faucet has a flow rate of 1.5 GPM, and is made of Chrome-plated Brass material, with a Quarter Turn Ceramic Disc valve. Faucet requires 3 faucet holes.

NO IMAGE AVAILABLE

A Century of Tradition and Quality.

For more than 100 years, Elkay has been making innovative products and providing exceptional customer care. We take pride in offering plumbing products that make life easier, inspire change and leave the world a better place.

Product Compliance: ADA & ICC A117.1
ASME A112.18.1/CSA B125.1
NSF 372 (lead free)
NSF 61

C[®][Clean and Care Manual \(PDF\)](#)[Installation Instructions \(PDF\) - P99365](#)[Warranty \(PDF\)](#)

In keeping with our policy of continuing product improvement, Elkay reserves the right to change product specifications without notice. Please visit elkay.com for the most current version of Elkay product specification sheets. This specification describes an Elkay product with design, quality, and functional benefits to the user. When making a comparison of other producers' offerings, be certain these features are not overlooked.

PART: _____ QTY: _____

PROJECT: _____

CONTACT: _____

DATE: _____

NOTES: _____

APPROVAL: _____

*right to change product specifications without notice. Please visit elkay.com
for the most current version of Elkay product specification sheets. This specification describes an Elkay product with design, quality, and functional benefits to the
user. When making a comparison of other producers' offerings, be certain these features are not overlooked.*

| | |
|--------------------------------|--------------------------------------|
| Mounting Type: | Deck Mount |
| Special Features: | Low Flow Solid Brass Construction |
| Spray Type: | Pre Rinse |
| Finish: | Chrome (CR) |
| Handle Type: | Lever Handle |
| Deck Clearance: | 6-1/2" |
| Spout Reach: | 30" |
| Spout Height: | 41-1/8" |
| Hole Drillings: | 3 |
| Material: | Chrome-plated Brass |
| Valve Type: | Quarter Turn Ceramic Disc |
| Valve Connection: | 1/2"-14 NPT |
| Flow Rate: | 1.5 GPM |
| Faucet Hole Size (min): | 1-3/8" |
| Faucet Hole Spread: | 8 |
| Spout Swing Rotation: | 360° |
| Spout Type: | Flexible Spout |

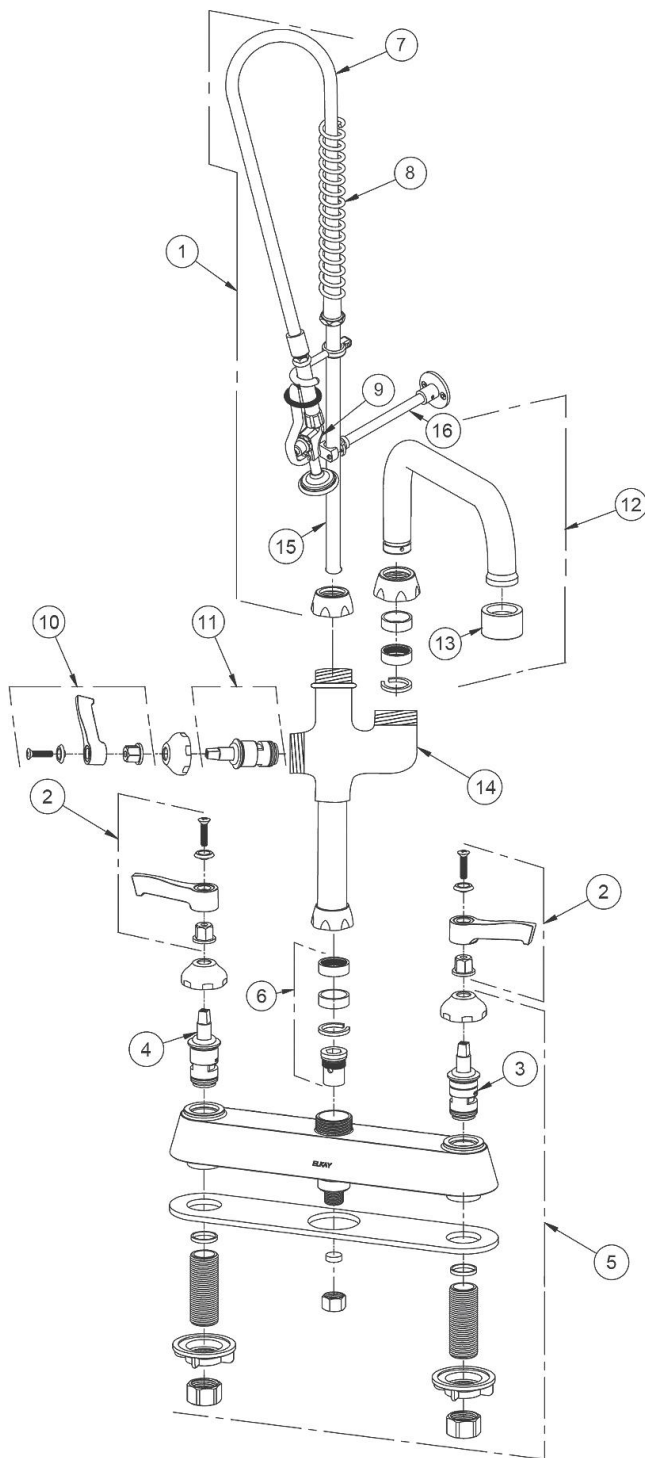
Special Note: 1.2 GPM spray head



Chrome
(CR)

In keeping with our policy of continuing product improvement, Elkay reserves the right to change product specifications without notice. Please visit elkay.com for the most current version of Elkay product specification sheets. This specification describes an Elkay product with design, quality, and functional benefits to the user. When making a comparison of other producers' offerings, be certain these features are not overlooked.

| ITEM | IND. PART | DESCRIPTION |
|------|-----------|----------------------|
| 1 | 45938C | Pre-Rinse Assembly |
| 2 | 45918C | Handle, 2" |
| 3 | 45923C | Right Cold Cartridge |
| 4 | 45924C | Left Hot Cartridge |
| 5 | 45915C | Body |
| 6 | 98554C | Backflow Kit |
| 7 | 45943C | 44" Hose |
| 8 | 45944C | Spring |
| 9 | 45942C | Spray Valve |
| 10 | A55385 | Handle, 2" |
| 11 | P29121NL | Cartridge |
| 12 | A55393 | Spout, 12" |
| 13 | LK734 | 2.2 GPM VR Aerator |
| 14 | 45934C | Add On Faucet Body |
| 15 | 45945C | Tall Riser |
| 16 | 45946C | Support Rod |



In keeping with our policy of continuing product improvement, Elkay reserves the right to change product specifications without notice. Please visit elkay.com for the most current version of Elkay product specification sheets. This specification describes an Elkay product with design, quality, and functional benefits to the user. When making a comparison of other producers' offerings, be certain these features are not overlooked.