

LED MODULAR STRINGLIGHT

Beacon360 Spark

Features

- Effortlessly branch off into individual rooms or in other directions as required.
- Flexibility to install lights exactly where needed.
- 40% less energy usage compared to LED bulb-based stringlights.
- Easily relocated or interchanged with other LED Jobsite lights throughout the site as the project progresses.
- Theft-resistant.



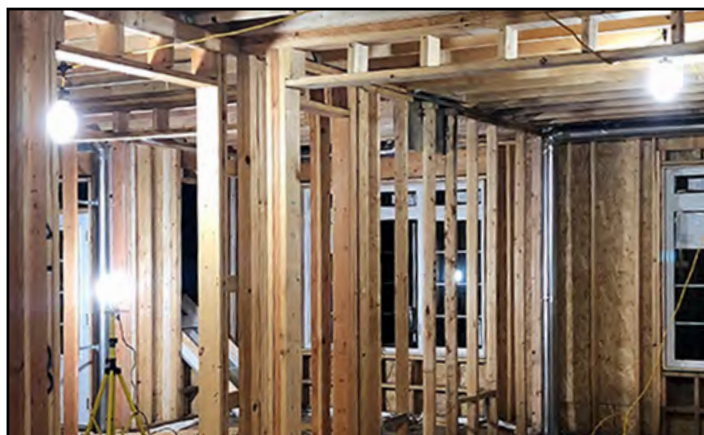
The Beacon360 Spark replaces traditional stringlights for increased efficiency and flexibility. Eliminate the hassles of stringlights not being bright enough, getting caught between walls, requiring frequent upkeep – just to be sent to the landfill at the end of the job.

Applications

- Replace all types of stringlights
- Corridors
- Small/medium rooms
- Stairwells

Recommended guidelines to meet OSHA standards

- Installation height: 8-15 feet
- Spacing: 20 feet



Specifications

Part Number	LE360LEDS-10P10C
Description	Beacon360 Spark
Lumens	2,400
Watts	20
Light Temperature	4,500K
Amp Draw (@120V)	0.17
Voltage	90-277
Linkage Rating (15A/120V)	60
Weight (light head)	1.5 lbs
Daisy-Chain	14/3 SJTW with molded 5-15P plug & 5-15C triple-tap connector
Daisy-Chain Length	20'
Quick-Connect	Watertight 3-pin locking connector
LED Expectancy	50,000 hours
Construction	High impact plastic & aluminum housing with polycarbonate lens.
Approvals	cETLus and CE Certified
Weatherproof Rating	IP64
Mounting options	Integrated molded mounting eyelet