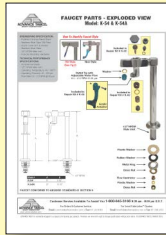




# K-54 & K-54A WATER FILLER FAUCETS

Conforms To NSF 61/9 Lead Free Requirements



Click This Link To  
View Assembly Sheet

## FEATURES:

Single water supply.  
Acrylic Actuator  
Colored hot & cold Indexes.  
1.0 GPM/3.8 LPM Aerator. 60 PSI.

## MATERIAL:

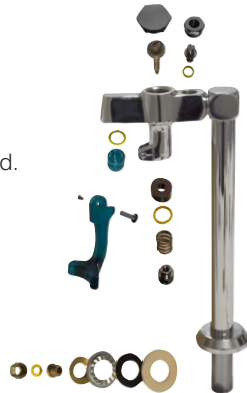
Brass chrome plated body & spout.  
Chrome plated handles.

## K-54/K-54A Replacement Parts

### Repair Kit For K-54 Faucet

Actual Faucet Not Included.

K-02



## WARNING:

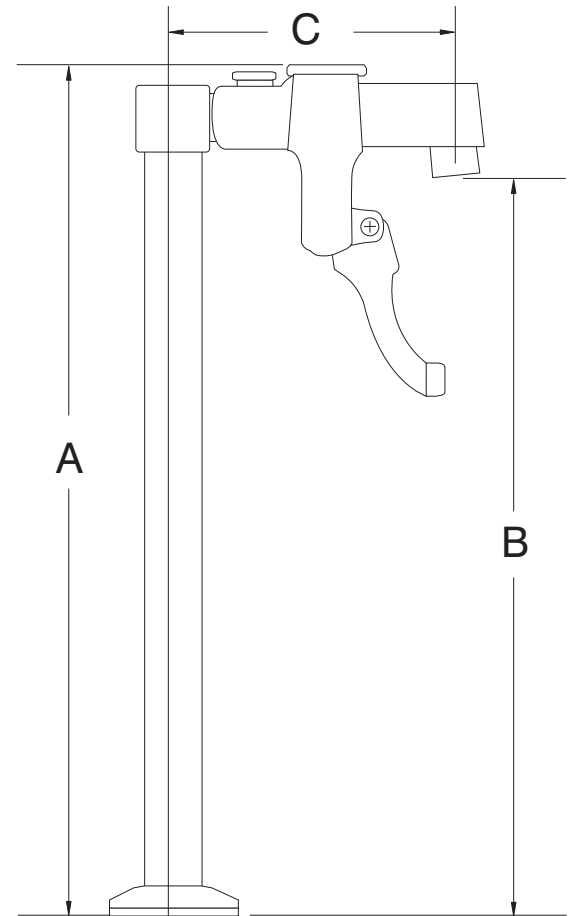
Faucet(s) on this page may expose you to chemicals, including lead, that are known to the State of California to cause cancer or birth defects or other reproductive harm. For more Info., visit [www.p65warnings.ca.gov](http://www.p65warnings.ca.gov).

Item #: \_\_\_\_\_ Qty #: \_\_\_\_\_

Model #: \_\_\_\_\_

Project #: \_\_\_\_\_

## DIMENSIONS and SPECIFICATIONS



1/2" NPT (Outside)  
3/8" IPS (Inside)



### K-54

(A) O.A. Height	(B) Spout to Deck	(C) Width
9 1/2"	8"	2 1/2"

### K-54A

(A) O.A. Height	(B) Spout to Deck	(C) Width
13 1/2"	12"	2 1/2"



Customer Service Available To Assist You **1-800-645-3166** 8:30 am - 8:00 pm E.S.T.

For Orders & Customer Service:

Email: [customer@advancetabco.com](mailto:customer@advancetabco.com) or Fax: 631-242-6900

For Smart Fabrication™ Quotes:

Email: [smartfab@advancetabco.com](mailto:smartfab@advancetabco.com) or Fax: 631-586-2933